

SEC 7, TN.4S RG.9E

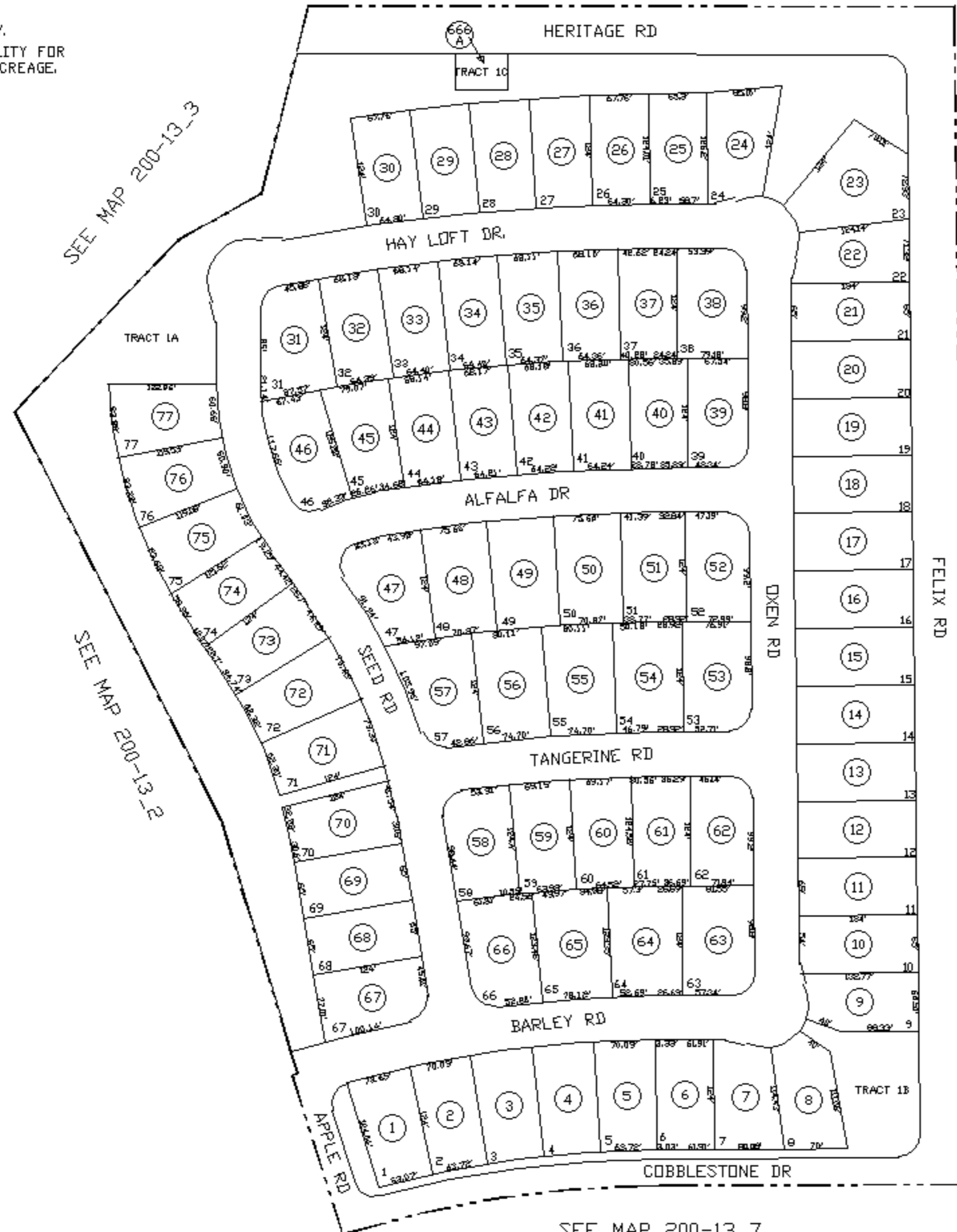
SEE MAP 200-31

200-13\_1

THIS MAP IS FOR TAX PURPOSES ONLY.  
THIS OFFICE WILL NOT ASSUME LIABILITY FOR  
REPRESENTATION, MEASUREMENTS OR ACREAGE.

THE ORIGINAL PLAT OF THIS SUBDIVISION IS  
ON FILE WITH THE PINAL COUNTY RECORDERS  
OFFICE, FOR COMPLETE INFORMATION OF PLAT

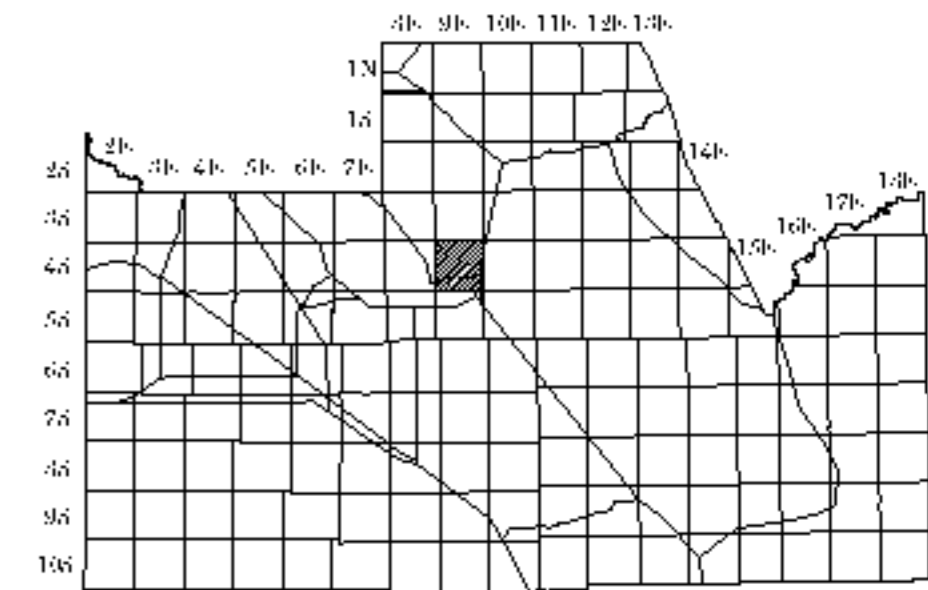
CANCELED PARCEL #  
200-31-008



CRESTFIELD MANOR AT ARIZONA  
FARMS VILLAGE TRACTS  
FOR PARCELS 1 THRU 7  
1A, 1B, 2A, 2B, 2C, 3A, 3B, 3C, 3D  
3E, 3F, 4A, 4B, 4C, 4D, 5A, 5B, 5C  
5D, 5E, 6A, 6B, 6C, 7A, 7B, 7C, 7D, 7E  
ARE UNDER PARCEL # 200-13-666D

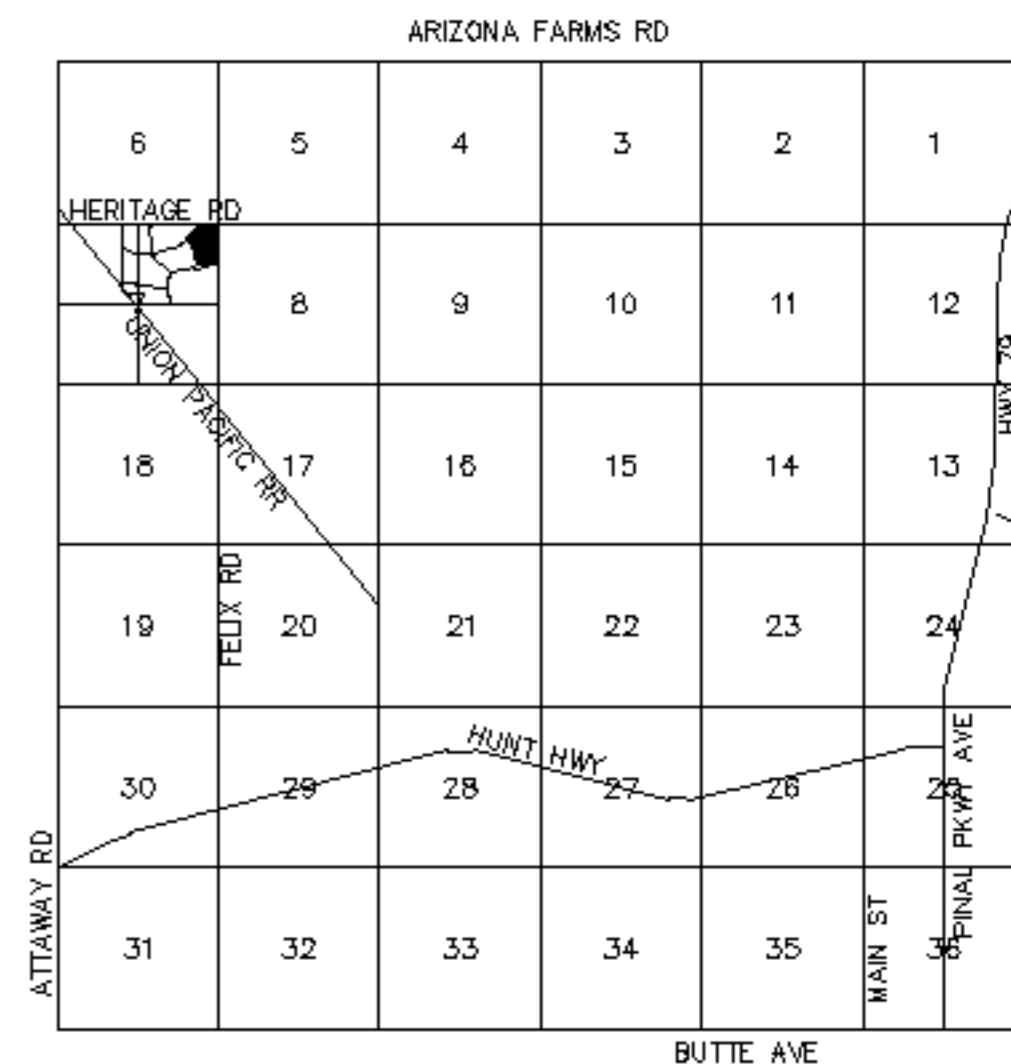
CRESTFIELD MANOR AT  
ARIZONA FARM VILLAGE  
PARCEL 1

CAB F - SLD 007



SCALE: 1" = 150'  
9-28-2007  
UPDATED BY: TH

**VICINITY MAP**



PINAL COUNTY ASSESSORS MAP

SEE MAP 200-31