

**SEC. 30 TN.4S RG.10E**

SEE MAP 201-21

**201-27**

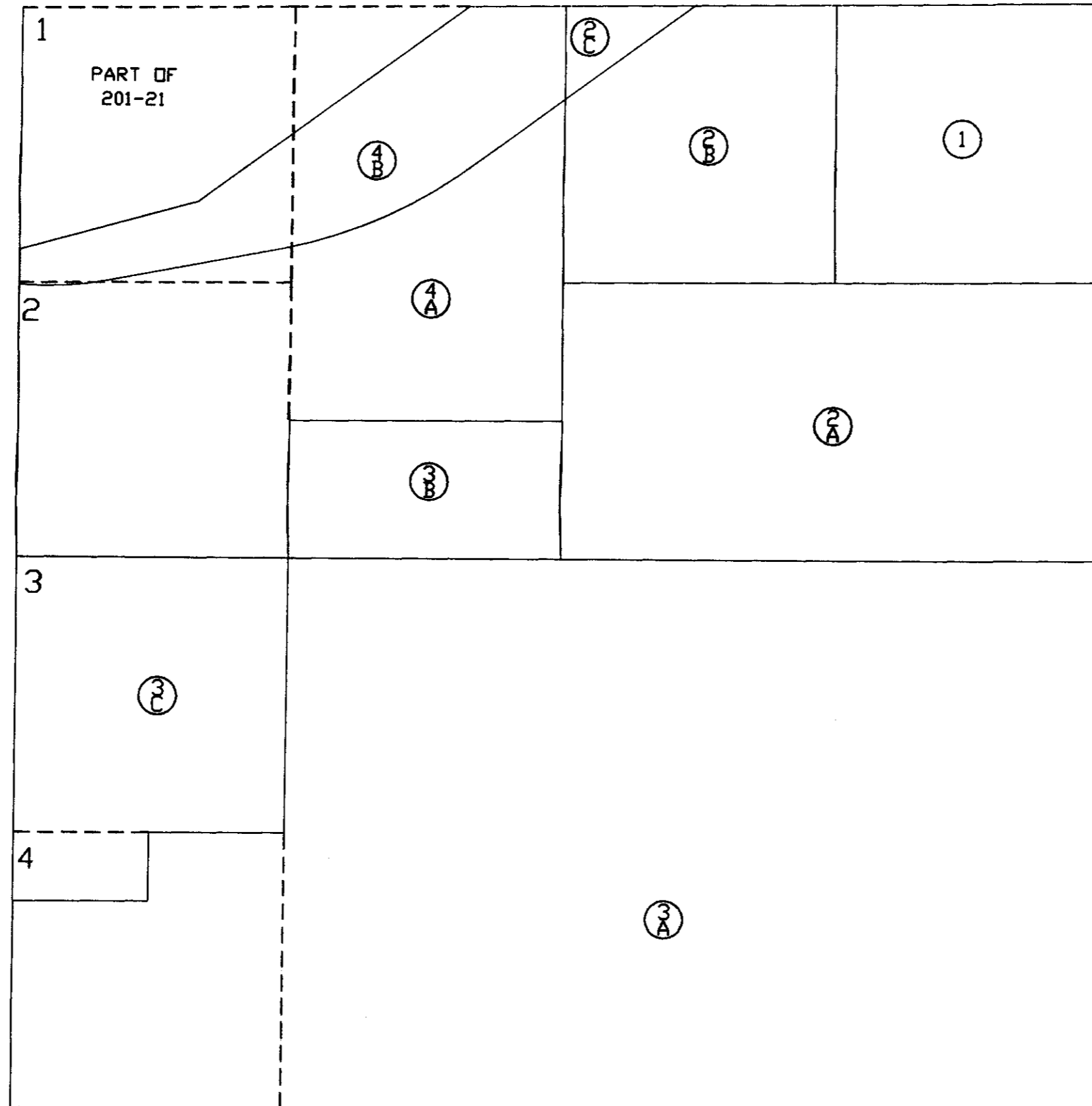
AREA CODE  
0000

SPECIAL DISTRICTS  
00000  
00000

THIS MAP IS FOR TAX PURPOSES ONLY.

THIS OFFICE WILL NOT ASSUME LIABILITY FOR  
REPRESENTATION, MEASUREMENTS OR ACREAGE.

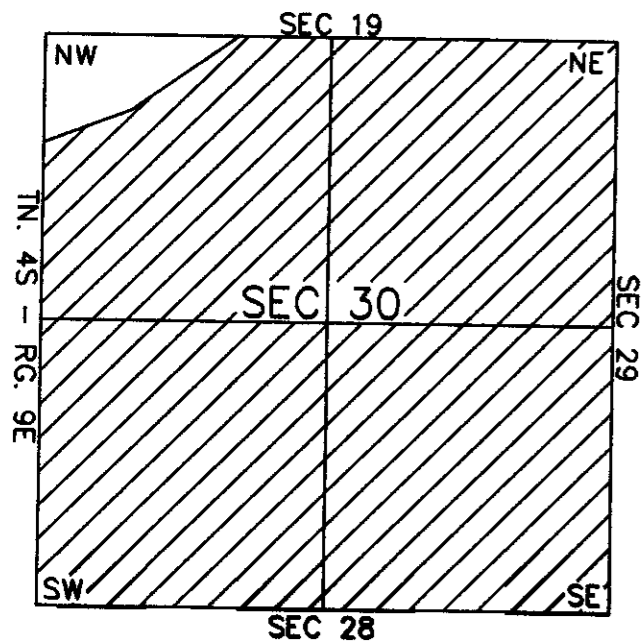
SEE BOOK 200



SEE MAP 201-26

THE ORIGINAL PLAT OF THIS SUBDIVISION IS  
ON FILE WITH THE PINAL COUNTY RECORDERS  
OFFICE, FOR COMPLETE INFORMATION OF PLAT  
AND CCA's CALL (520) 868-7100.

**VICINITY MAP**



SEE MAP 201-28



SCALE: 1" = 600'

08-17-2001