

# SEC. 28 TN.4S RG.10E

SEE MAP 201-23

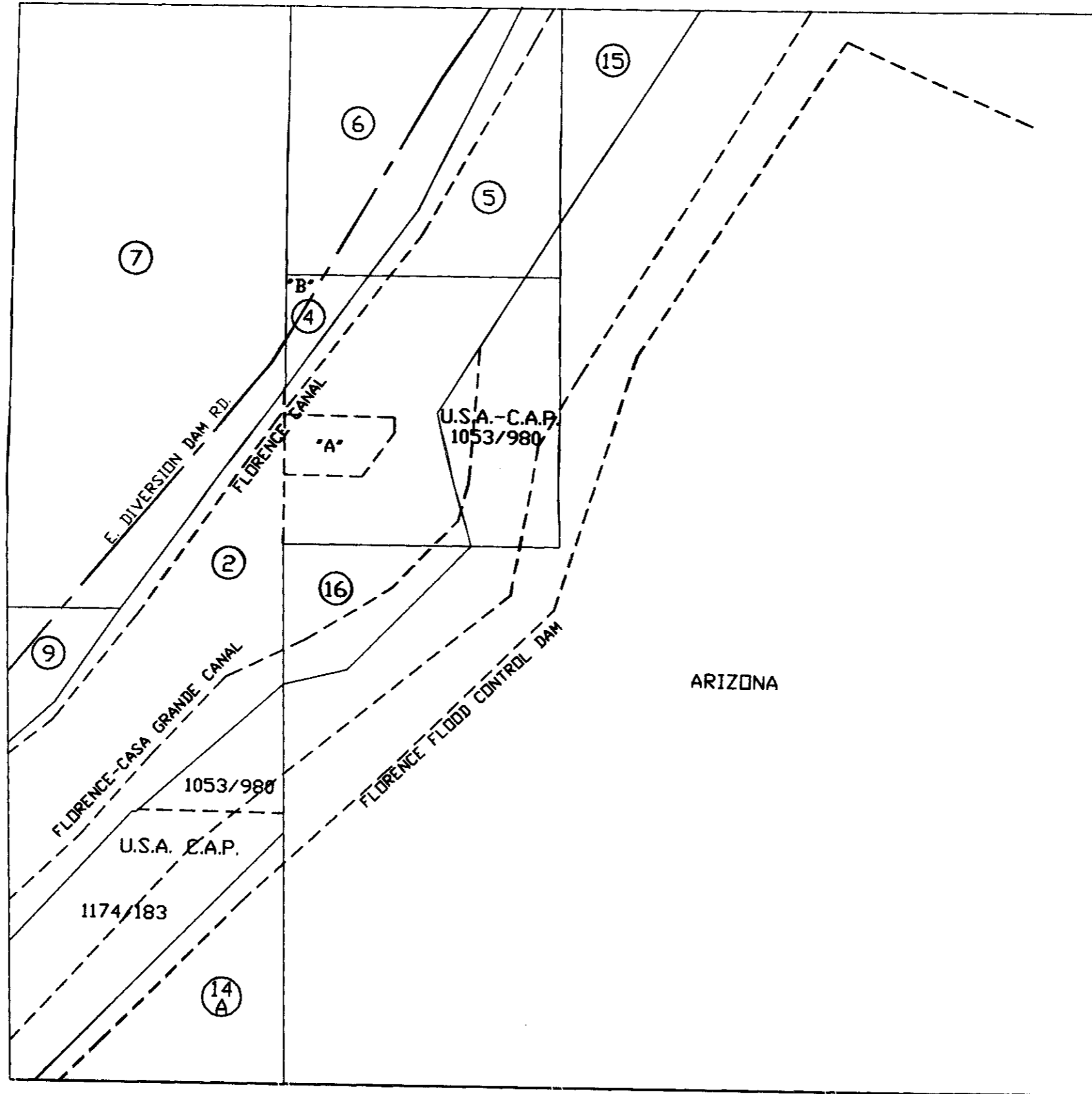
# 201-25

AREA CODE  
0000

SPECIAL DISTRICTS  
0000  
0000

THIS MAP IS FOR TAX PURPOSES ONLY.  
THIS OFFICE WILL NOT ASSUME LIABILITY FOR  
REPRESENTATION, MEASUREMENTS OR ACRES.

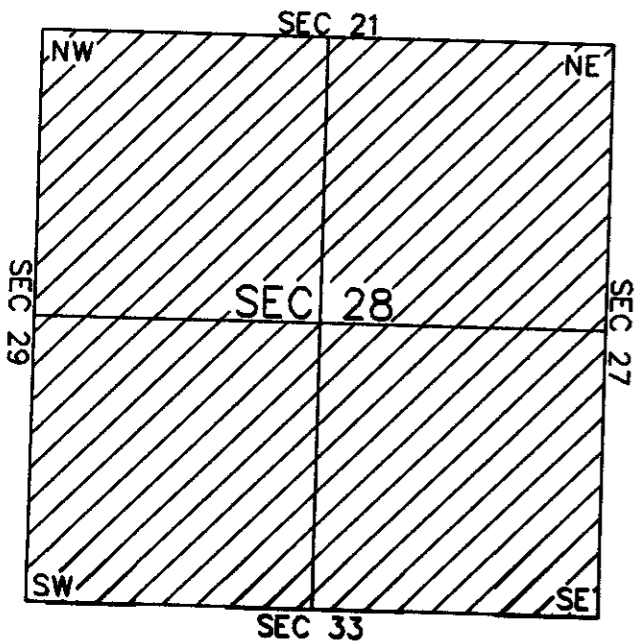
SEE MAP 201-26



SEE MAP 201-12

THE ORIGINAL PLAT OF THIS SUBDIVISION IS  
ON FILE WITH THE PINAL COUNTY RECORDERS  
OFFICE, FOR COMPLETE INFORMATION OF PLAT  
AND CCMR'S CALL (520) 868-7100.

## VICINITY MAP



SCALE: 1" = 600'

08-17-2001

SEE MAP 201-12