

**SEC. 13 TN.4S RG.10E**

SEE MAP 201-15

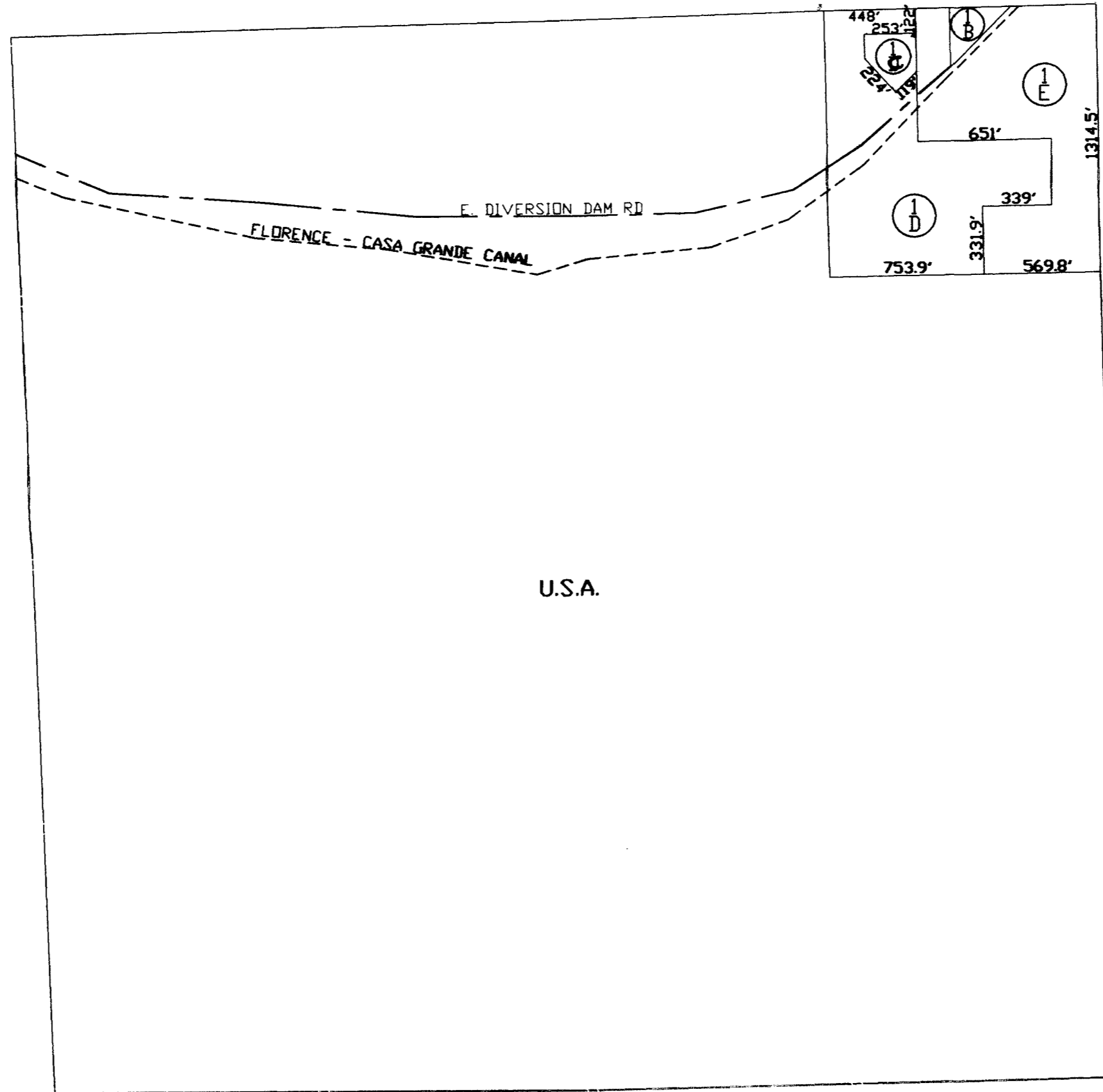
**201-16**

AREA CODE  
0000

SPECIAL DISTRICTS  
00000  
00000

THIS MAP IS FOR TAX PURPOSES ONLY.  
THIS OFFICE WILL NOT ASSUME LIABILITY FOR  
REPRESENTATION, MEASUREMENTS OR ACREAGE.

SEE MAP 201-17

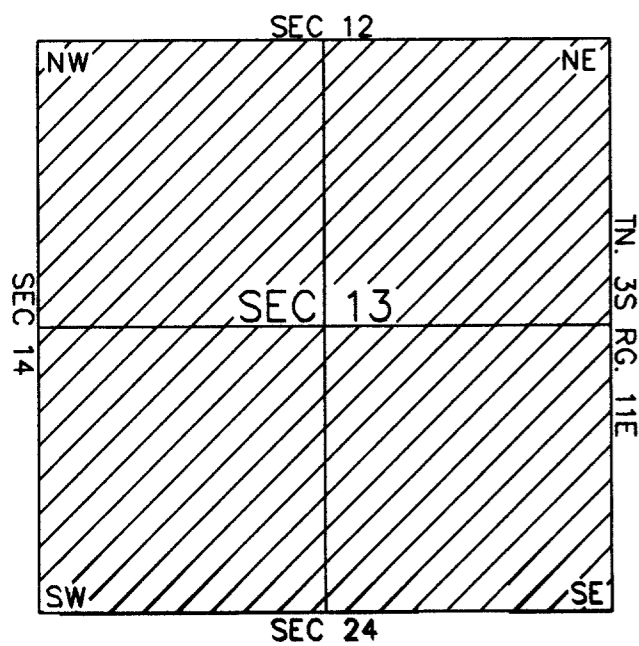


**GIS CONVERSION**

THE ORIGINAL PLAT OF THIS SUBMISSION IS  
ON FILE WITH THE PINAL COUNTY RECORDERS  
OFFICE, FOR COMPLETE INFORMATION OF PLAT  
AND CC&R'S CALL (520) 868-7100.

SEE MAP 201-33

**VICINITY MAP**



SEE MAP 201-12



SCALE: 1" = 600'

08-17-2001