

**SEC. 10 TN.4S RG.10E**

SEE MAP 201-12

**201-13**

AREA CODE  
0000

SPECIAL DISTRICTS  
00000  
00000

THIS MAP IS FOR TAX PURPOSES ONLY.

THIS OFFICE WILL NOT ASSUME LIABILITY FOR  
REPRESENTATION, MEASUREMENTS OR ACREAGE.

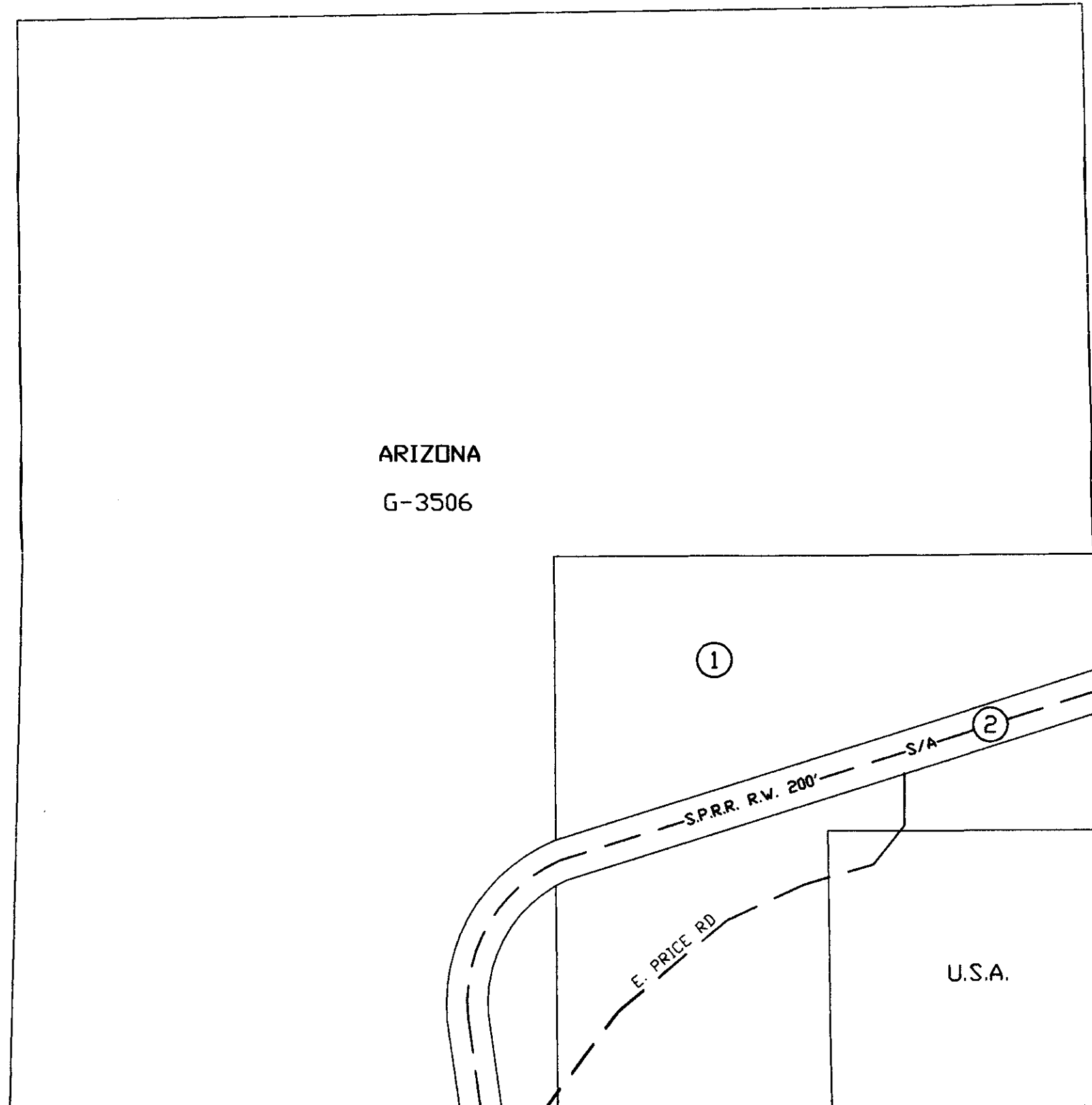
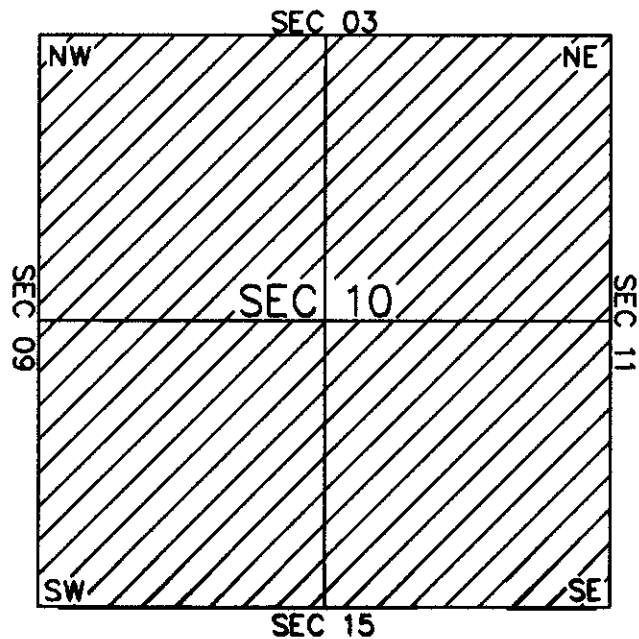
SEE MAP 201-12

ARIZONA  
G-3506

SEE MAP 201-14

THE ORIGINAL PLAT OF THIS SUBDIVISION IS  
ON FILE WITH THE PINAL COUNTY RECORDERS  
OFFICE, FOR COMPLETE INFORMATION OF PLAT  
AND CC&M's CALL (620) 868-7100.

**VICINITY MAP**



SEE MAP 201-18



SCALE: 1" = 600'

08-17-2001