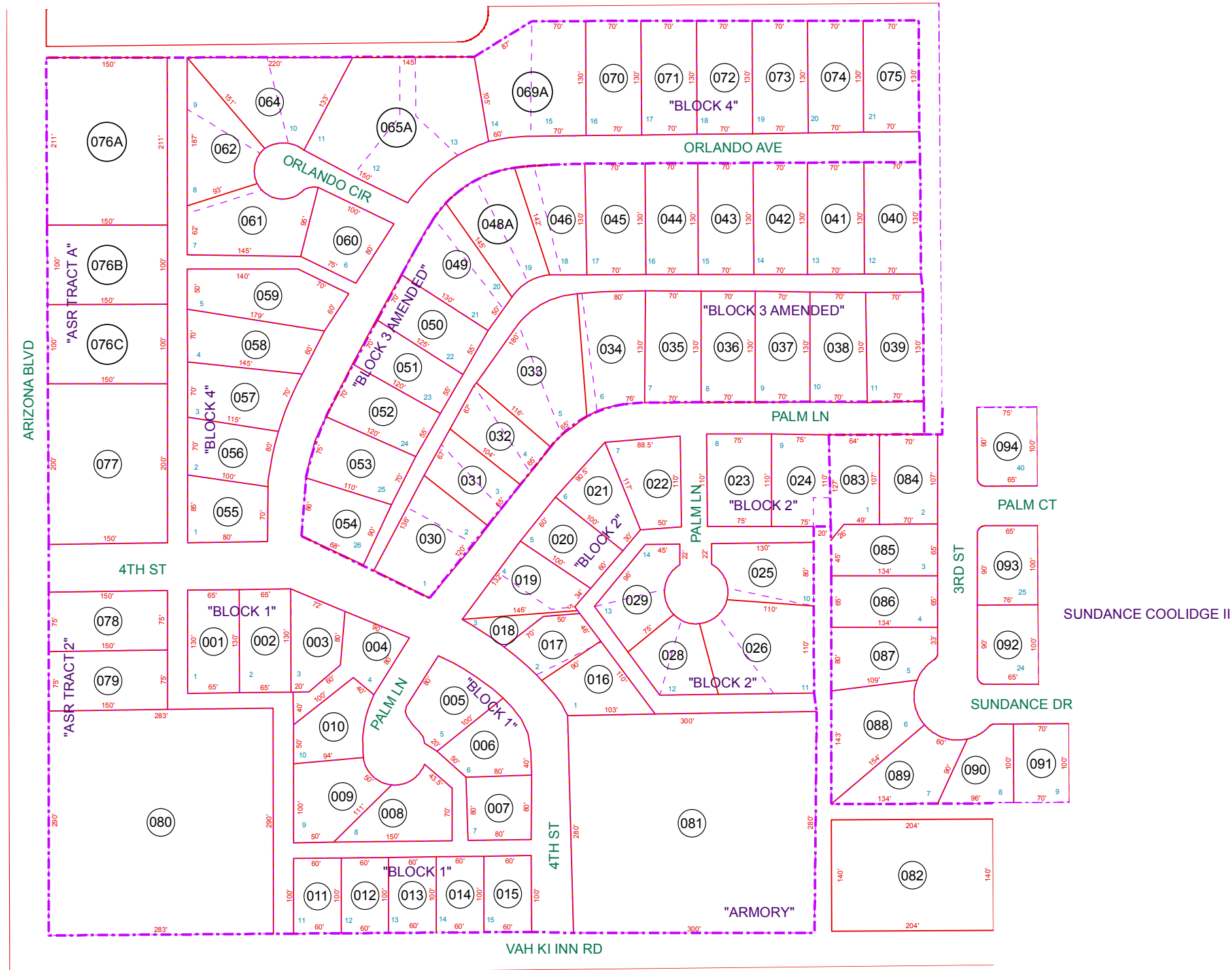


SEE MAP 203-13



SEE MAP 205-03\_3

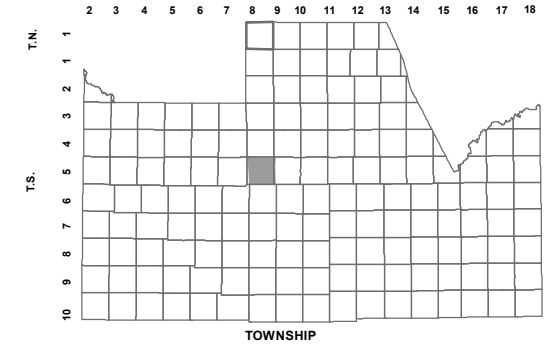
SEE MAP 203-17

SEE MAP 203-19

BOOK - MAP

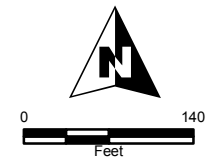
# 203-14

**SEC. 15 T.05S. R.08E.**  
**J.A. ROBERTS SUBD NO. 1**  
**BK-07 - PG-041**  
**J.A. ROBERTS SUBD NO.1**  
**BLOCK 3 AMENDED**  
**BK-08 - PG-10**  
**SUNDANCE COOLIDGE II**  
**BK-19 - PG-16**  
**LOCATION MAPS**  
 R.E.



6	5	4	3	2	1
7	8	9	10	11	12
18	17	16	15	14	13
19	20	21	22	23	24
30	29	28	27	26	25
31	32	33	34	35	36

SECTION



Revised: 6/18/2013

By: DW



**PINAL COUNTY**  
*wide open opportunity*

**Pinal County Assessor**

THIS MAP DOES NOT REPRESENT A SURVEY. NO LIABILITY IS ASSUMED FOR THE ACCURACY OF THE DATA DELINEATED HEREIN, EITHER EXPRESSED OR IMPLIED BY PINAL COUNTY OR ITS EMPLOYEES. THIS MAP IS COMPILED FROM OFFICIAL RECORDS, INCLUDING PLATS, SURVEYS, RECORDED DEEDS AND CONTRACTS, AND ONLY CONTAINS INFORMATION REQUIRED FOR THE PINAL COUNTY ASSESSOR'S OFFICE PURPOSES.