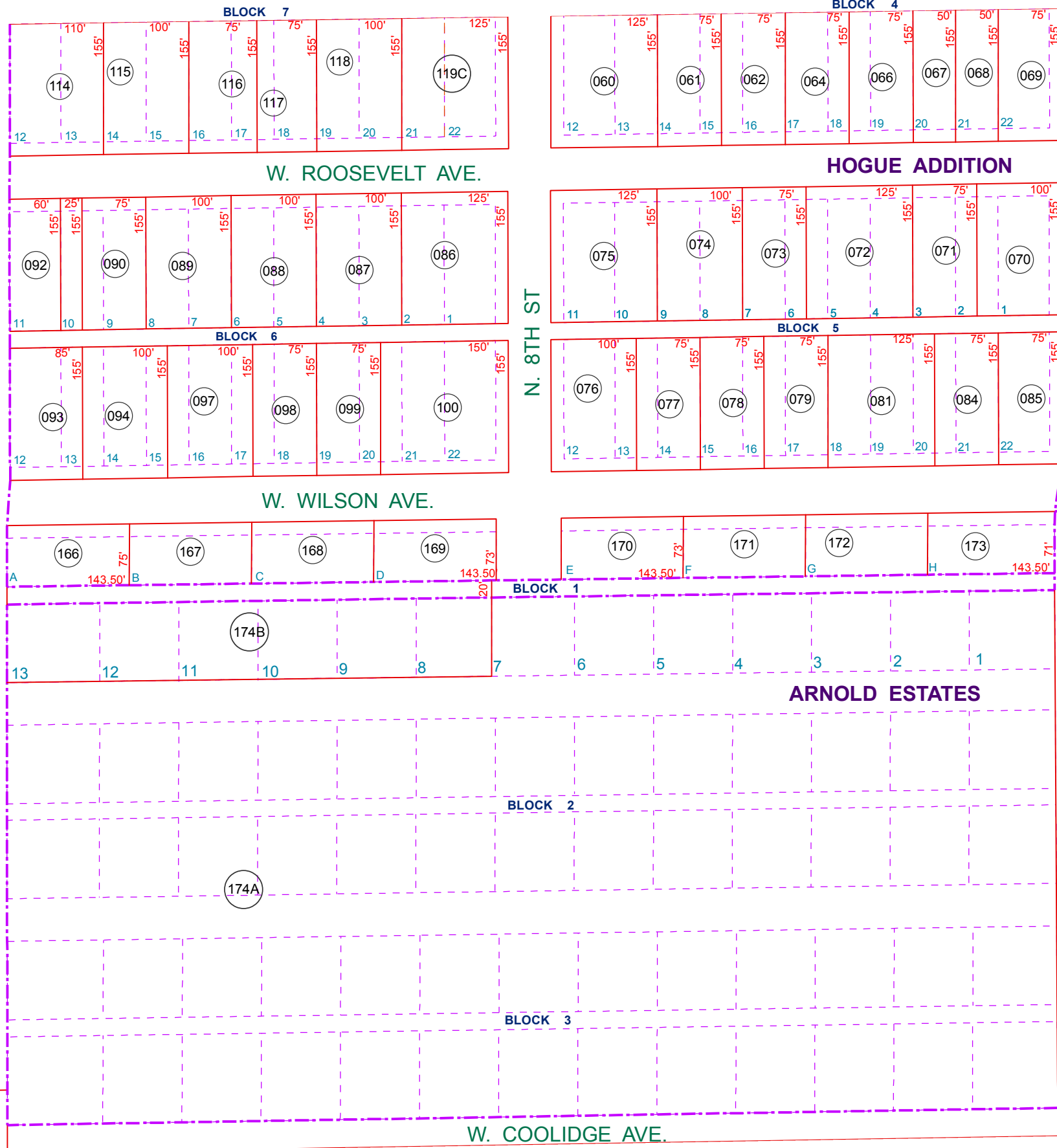


SEE MAP 204-09\_1



SEE MAP 204-05

N. 9TH ST

N. 8TH ST

N. 7TH ST

SEE MAP 204-08\_2

NAP

SEE MAP 204-10

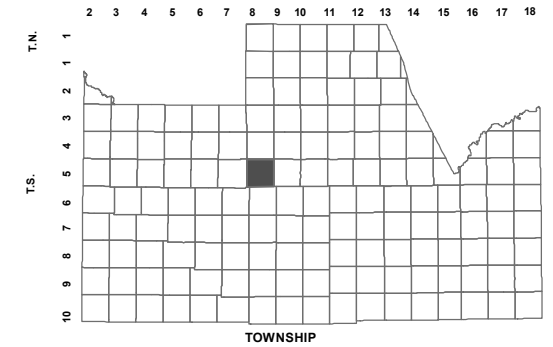
BOOK - MAP

# 204-09\_2

W2 SE SEC. 21 T.05S. R.08E.  
HOGUE ADDITION  
BK 5 - PG 33

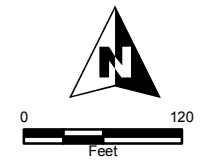
ARNOLD ESTATES  
BK 7 - PG 1

LOCATION MAPS  
R.E.



6	5	4	3	2	1
7	8	9	10	11	12
18	17	16	15	14	13
19	20	21	22	23	24
30	29	28	27	26	25
31	32	33	34	35	36

SECTION



Revised: 8/1/2012

By: **TH**



PINAL COUNTY  
*wide open opportunity*

Pinal County Assessor

THIS MAP DOES NOT REPRESENT A SURVEY. NO LIABILITY IS ASSUMED FOR THE ACCURACY OF THE DATA DELINEATED HEREIN, EITHER EXPRESSED OR IMPLIED BY PINAL COUNTY OR ITS EMPLOYEES. THIS MAP IS COMPILED FROM OFFICIAL RECORDS, INCLUDING PLATS, SURVEYS, RECORDED DEEDS AND CONTRACTS, AND ONLY CONTAINS INFORMATION REQUIRED FOR THE PINAL COUNTY ASSESSOR'S OFFICE PURPOSES.