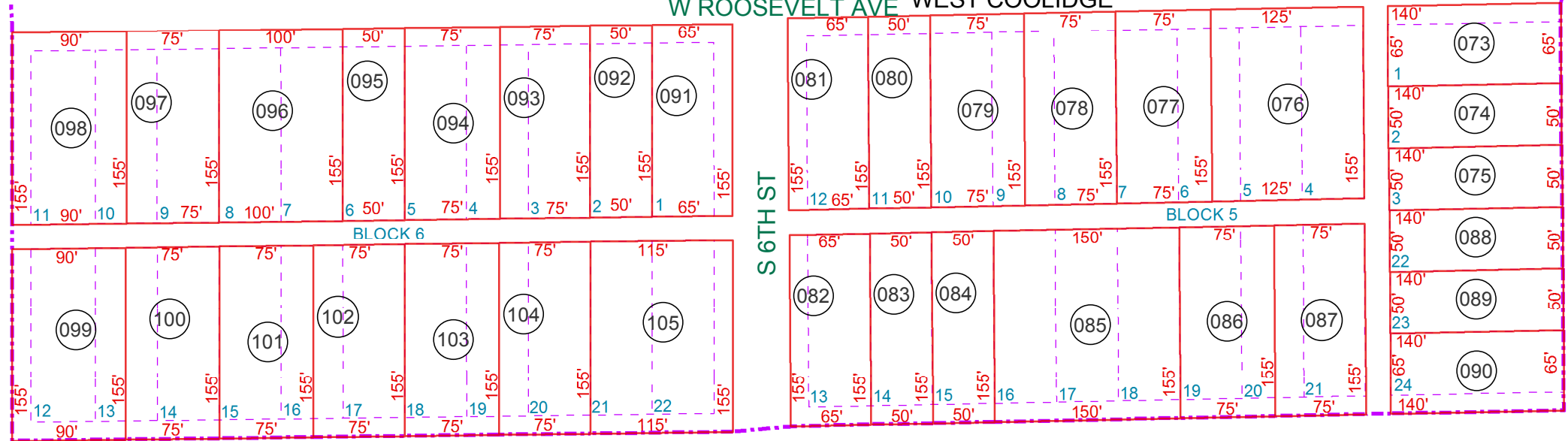
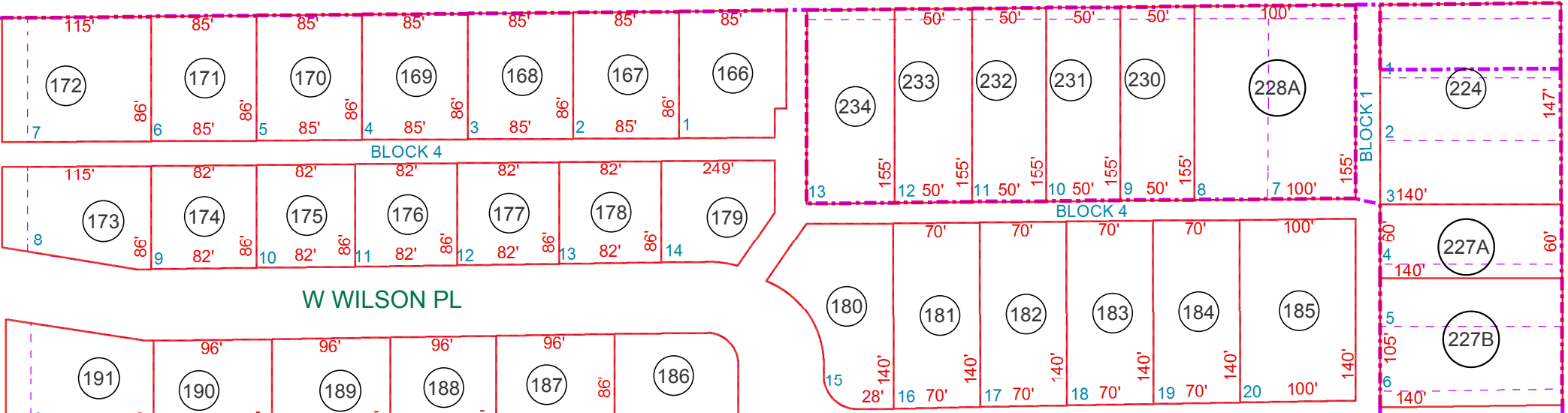


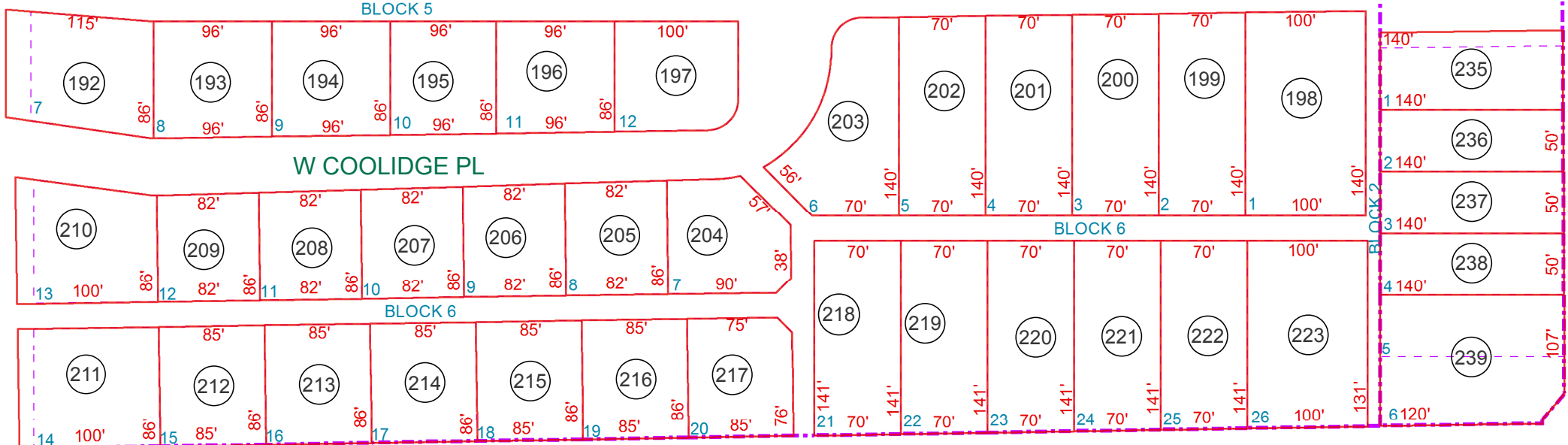
SEE MAP 204-08\_1  
 W ROOSEVELT AVE WEST COOLIDGE



W WILSON AVE



ARNOLD ESTATES W HARDING AVE



COOLIDGE AVE

SEE MAP 204-11

SEE MAP 204-09\_2  
 KENWORTHY RD

SEE MAP 205-04\_2  
 ARIZONA BLVD

BOOK - MAP

# 204-08\_2

SE SE SEC. 21 T.05S. R.08E.

WEST COOLIDGE  
 BOOK 4 - PAGE 003  
 ARNOLD ESTATES  
 BOOK 7 - PAGE 001  
 RICHIE ADDITION UNIT 1  
 BOOK 6 - PAGE 005  
 CITY OF COOLIDGE ROW ABAND.  
 1997-036593 & 2006-078294

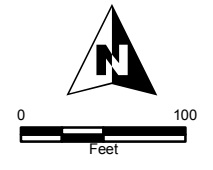
LOCATION MAPS  
 R.E.

T.N. 1 2 3 4 5 6 7 8 9 10 11 12 13 14 15 16 17 18  
 T.S. 1 2 3 4 5 6 7 8 9 10

TOWNSHIP

|    |    |    |    |    |    |    |
|----|----|----|----|----|----|----|
|    | 6  | 5  | 4  | 3  | 2  | 1  |
|    | 7  | 8  | 9  | 10 | 11 | 12 |
| 18 | 17 | 16 | 15 | 14 | 13 |    |
| 19 | 20 | 21 | 22 | 23 | 24 |    |
| 30 | 29 | 28 | 27 | 26 | 25 |    |
| 31 | 32 | 33 | 34 | 35 | 36 |    |

SECTION



Revised: 4/25/2018  
 By: MBG

**PINAL COUNTY**  
 WIDE OPEN OPPORTUNITY

Pinal County Assessor

THIS MAP DOES NOT REPRESENT A SURVEY. NO LIABILITY IS ASSUMED FOR THE ACCURACY OF THE DATA DELINEATED HEREIN, EITHER EXPRESSED OR IMPLIED BY PINAL COUNTY OR ITS EMPLOYEES. THIS MAP IS COMPILED FROM OFFICIAL RECORDS, INCLUDING PLATS, SURVEYS, RECORDED DEEDS AND CONTRACTS, AND ONLY CONTAINS INFORMATION REQUIRED FOR THE PINAL COUNTY ASSESSOR'S OFFICE PURPOSES.