

# SEC. 14 TN.5S RG.8E

SEE MAP 209-13

# 209-16

AREA CODE  
2103

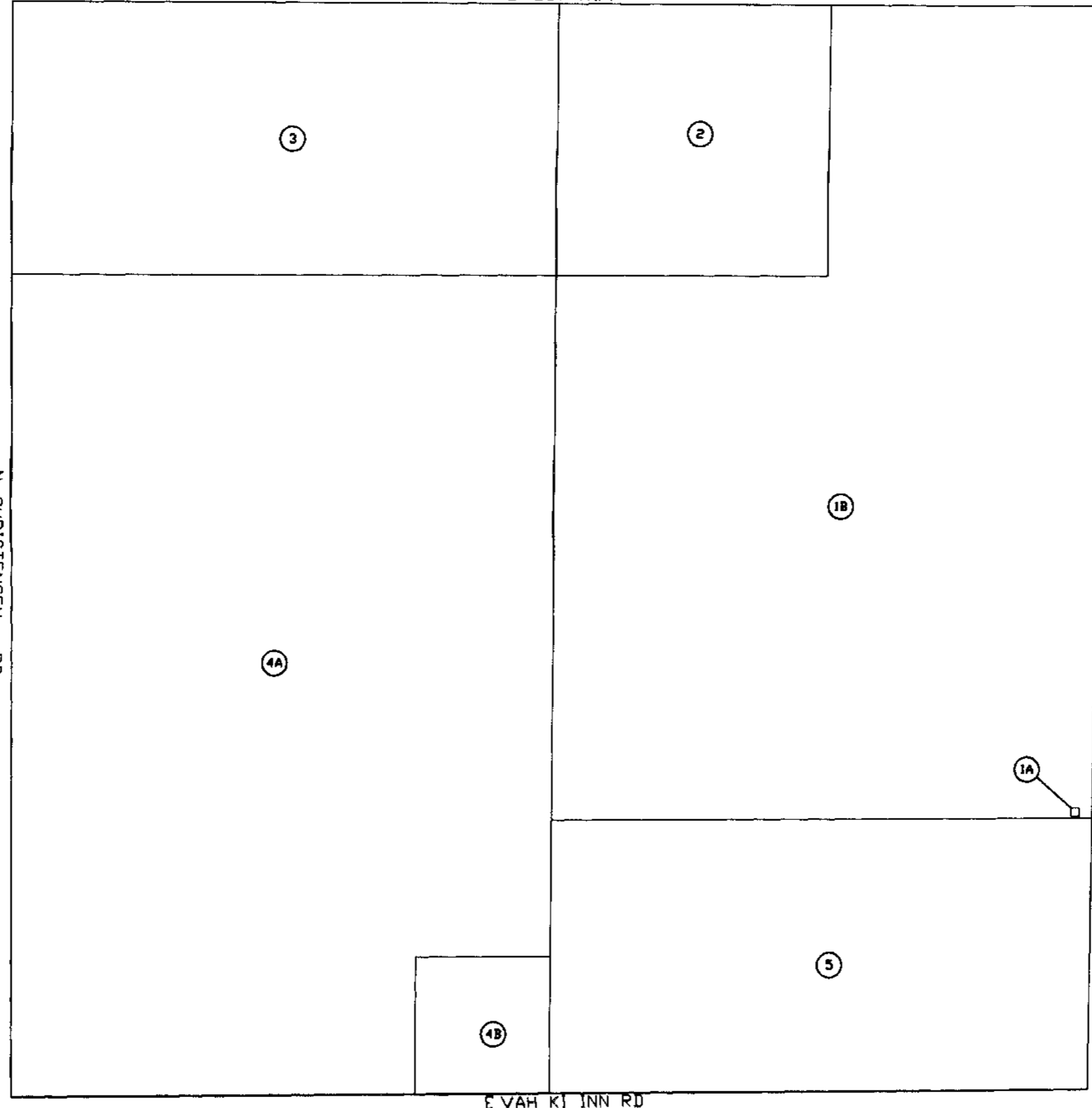
SPECIAL DISTRICTS  
12662  
16601

THIS MAP IS FOR TAX PURPOSES ONLY  
THIS OFFICE WILL NOT ASSUME LIABILITY FOR  
REPRESENTATION, MEASUREMENTS OR ACREAGE.

SEE BOOK 203

N CHRISTENSEN RD

E 287 HWY

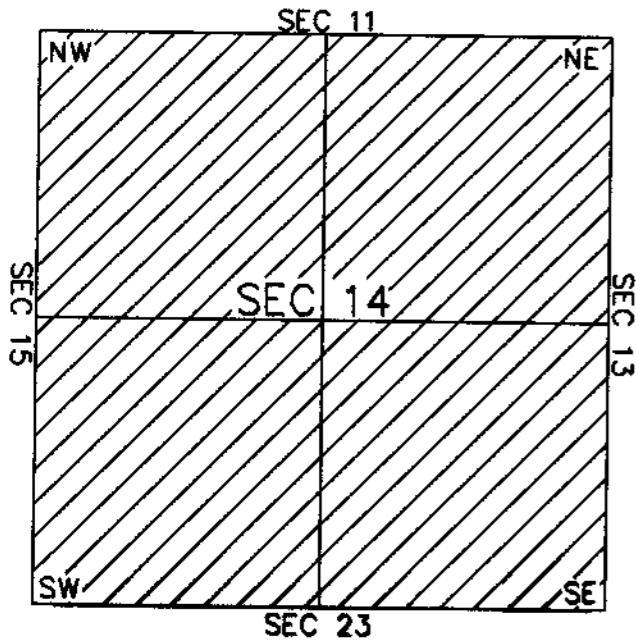


N NAFZIGER RD

SEE MAP 209-15

THE ORIGINAL PLAT OF THIS SUBDIVISION IS  
ON FILE WITH THE PINAL COUNTY RECORDERS  
OFFICE, FOR COMPLETE INFORMATION OF PLAT  
AND CCR's CALL (520) 868-7100.

## VICINITY MAP



E VAH KI INN RD

SEE MAP 209-21



SCALE. 1" = 600'

09-03-2001