

SEC. 2 TN.5S RG.8E

SEE BOOK 200

209-03

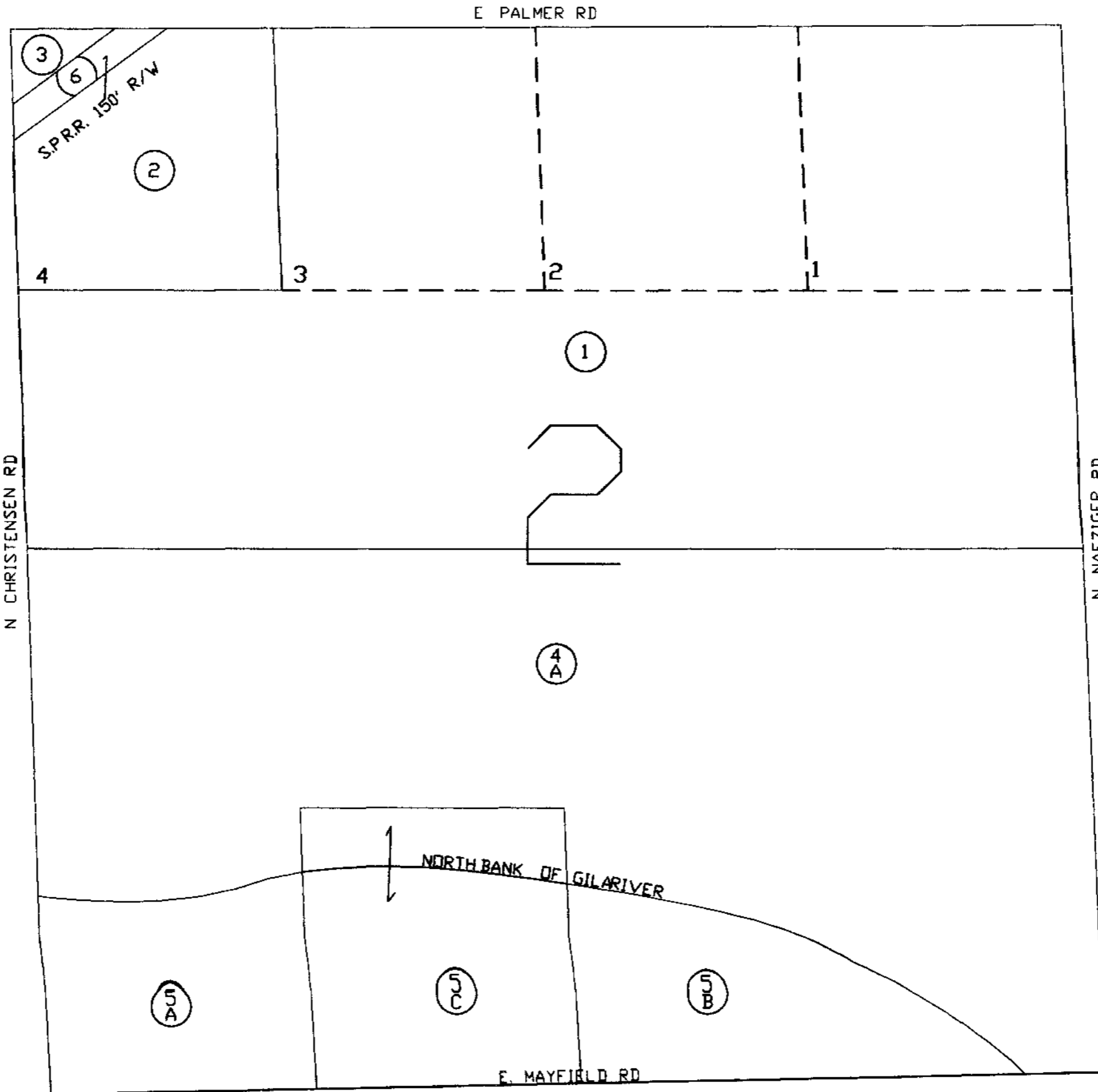
AREA CODE
0117
0122
0124

SPECIAL DISTRICTS
12662
15629
16601
16608

THIS MAP IS FOR TAX PURPOSES ONLY
THIS OFFICE WILL NOT ASSUME LIABILITY FOR
REPRESENTATION, MEASUREMENTS OR ACRES.

SEE MAP 209-04

N CHRISTENSEN RD

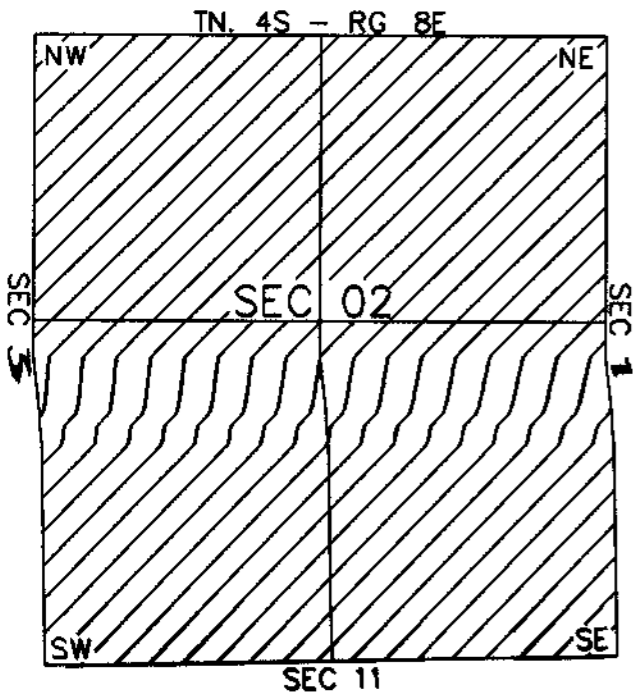


N NAFZIGER RD

SEE MAP 209-03

THE ORIGINAL PLAT OF THIS SUBDIVISION IS
ON FILE WITH THE PINAL COUNTY RECORDERS
OFFICE, FOR COMPLETE INFORMATION OF PLAT
AND CC&R'S CALL (520) 868-7100.

VICINITY MAP



SEE MAP 209-11



SCALE. 1" = 600'

09-03-2001

PINAL COUNTY ASSESSORS MAP