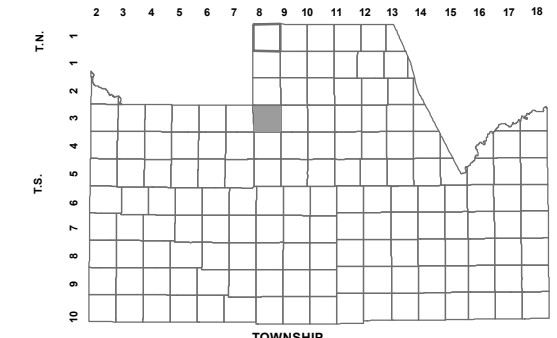


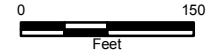
210-85_5

SE SEC. 27 T.03S. R.08E.
THE VILLAGE AT COPPER BASIN
UNIT 5C-1: 2017-019532

LOCATION MAPS
R.E.



HASH KNIFE DRAW RD		SCHNEPF RD			
6	5	4	3	2	1
SKYLINE DR		GAGARINITE RD			
7	8	9	10	11	12
ROBERTS RD		SIERRA VISTARD		QUAIL RUN LN	
18	17	16	15	14	13
CARY RD		BELLA VISTARD			
19	20	21	22	23	24
HUNTPINE		JUDD RD			
30	29	28	26	25	
		MAGMA RD		ATTAWAY RD	
31	32	33	34	35	36
		ARIZONA FARMS RD			



Revised: 12/4/2017

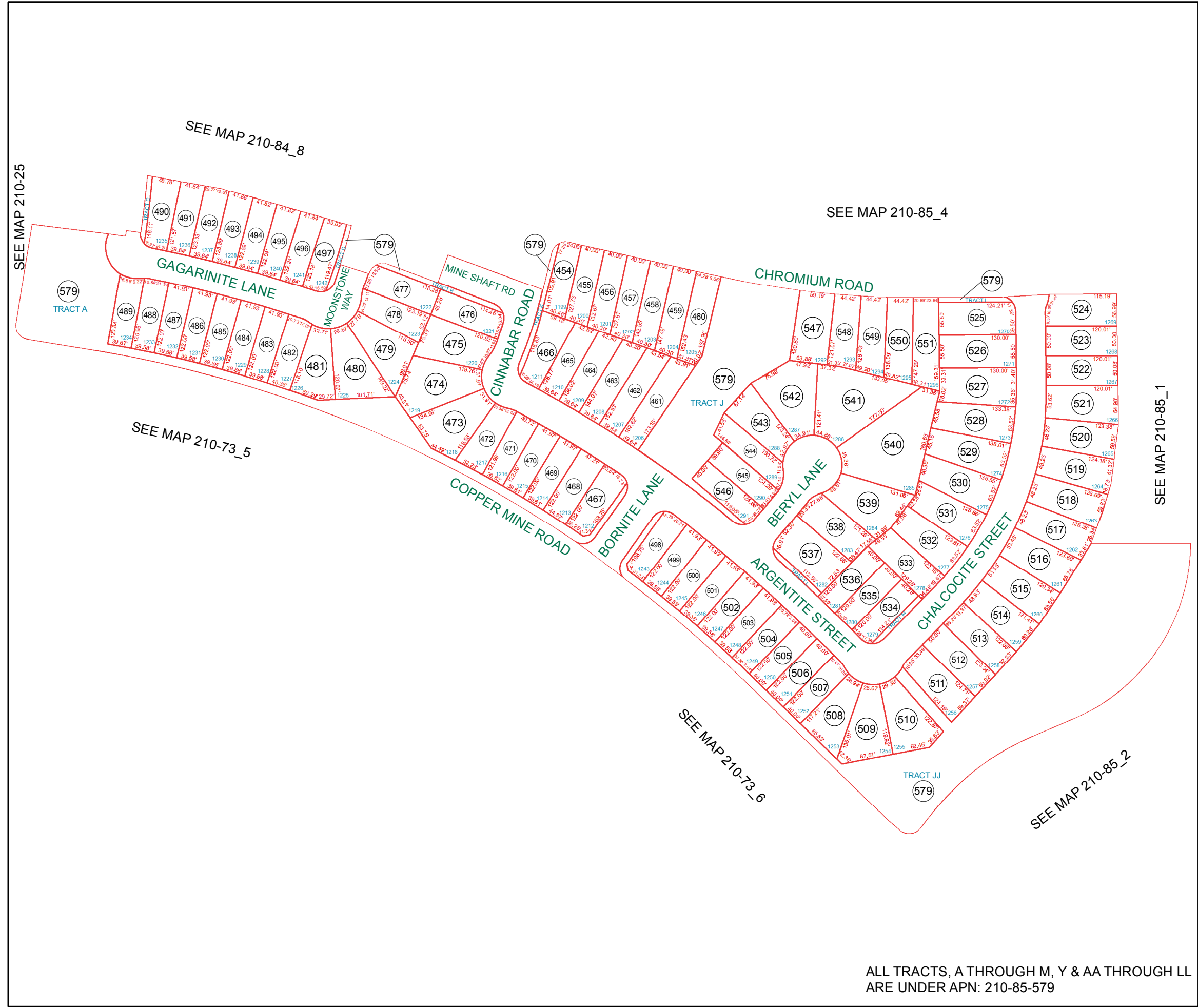
By: DW



PINAL COUNTY
WIDE OPEN OPPORTUNITY

Pinal County Assessor

THIS MAP DOES NOT REPRESENT A SURVEY. NO LIABILITY IS ASSUMED FOR THE ACCURACY OF THE DATA DELINEATED HEREIN, EITHER EXPRESSED OR IMPLIED BY PINAL COUNTY OR ITS EMPLOYEES. THIS MAP IS COMPILED FROM OFFICIAL RECORDS, INCLUDING PLATS, SURVEYS, RECORDED DEEDS AND CONTRACTS, AND ONLY CONTAINS INFORMATION REQUIRED FOR THE PINAL COUNTY ASSESSOR'S OFFICE PURPOSES.



SEE MAP 210-85_4

SEE MAP 210-85_1

SEE MAP 210-85_2

SEE MAP 210-73_6

SEE MAP 210-73_5

SEE MAP 210-84_8

SEE MAP 210-25

ALL TRACTS, A THROUGH M, Y & AA THROUGH LL
ARE UNDER APN: 210-85-579