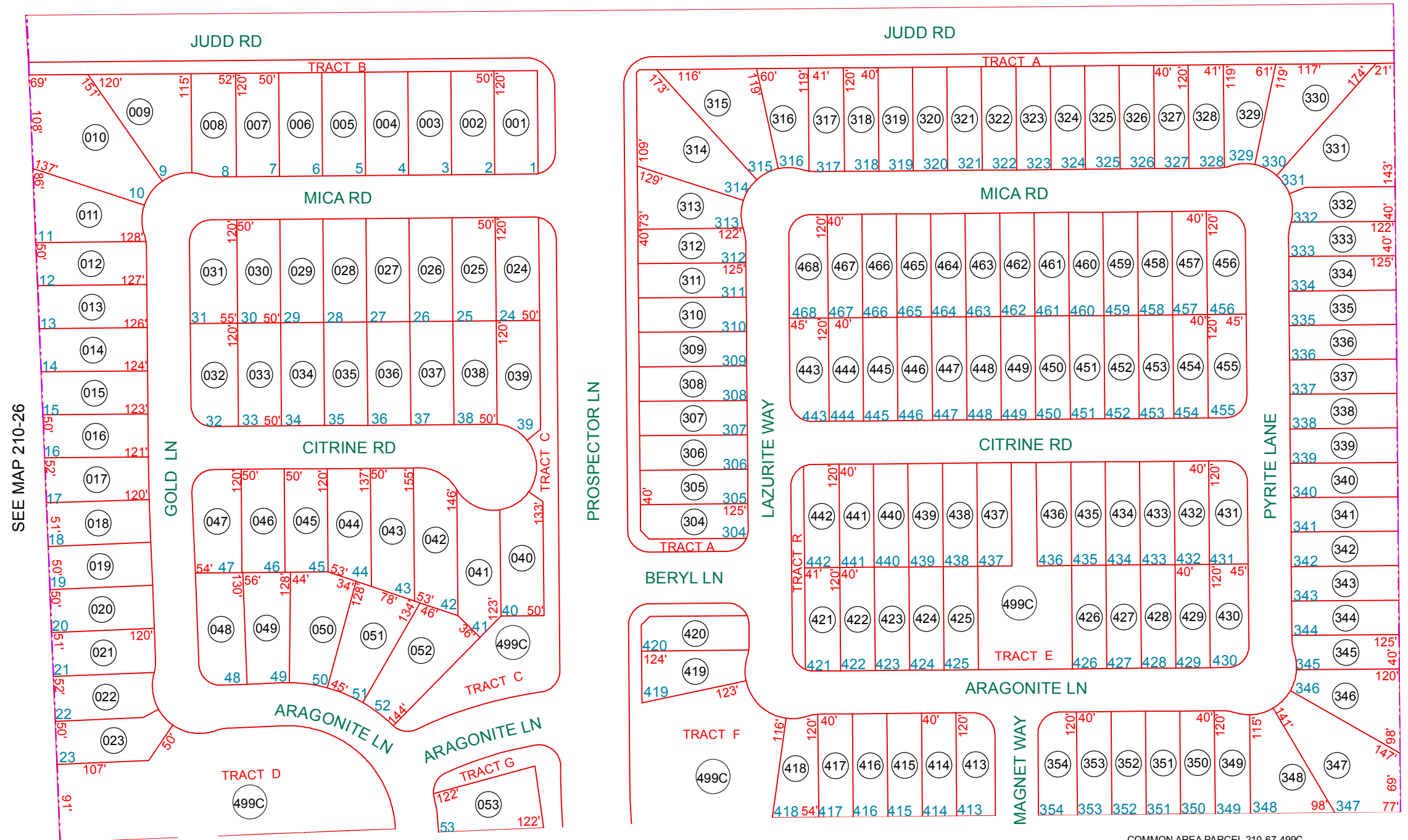


210-84_1

SEC. 27 T.03S. R.08E.
THE VILLAGE AT COPPER BASIN
UNIT 5A
CABINET G - SLIDE 140

SEE MAP 210-22



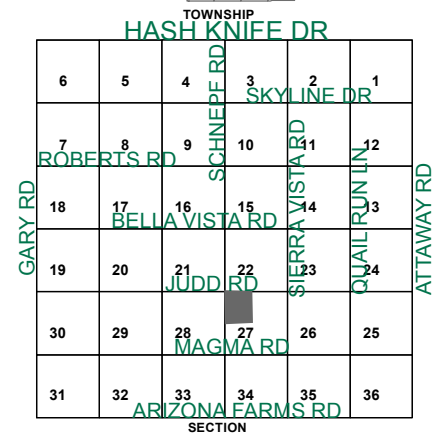
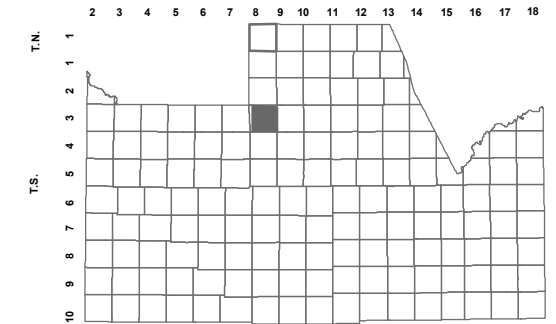
SEE MAP 210-26

SEE MAP 210-25

SEE MAP 210-84_2

COMMON AREA PARCEL 210-67-499C
COPPER BASIN UNIT ONE
TRACTS: A, B, C, E, F, G, H, I, J & K
THE VILLAGE AT COPPER BASIN UNIT 2
TRACTS: A & B
THE VILLAGE AT COPPER BASIN UNIT 3A
TRACTS: A THRU T
THE VILLAGE AT COPPER BASIN UNIT 3B
TRACTS: A THRU M
THE VILLAGE AT COPPER BASIN UNIT 4
TRACTS: 4A THRU 4L
THE VILLAGE AT COPPER BASIN UNIT 5A
TRACTS: A THRU R
COLLECTOR ROADS, PARCELS, COMMON TRACTS & ESMTS FOR
THE VILLAGE @ COPPER BASIN UNIT 3
TRACTS: A, B, C, E, F & G

LOCATION MAPS
R.E.



Revised: 6/15/2012

By: YL



PINAL COUNTY
wide open opportunity

Pinal County Assessor

THIS MAP DOES NOT REPRESENT A SURVEY. NO LIABILITY IS ASSUMED FOR THE ACCURACY OF THE DATA DELINEATED HEREIN, EITHER EXPRESSED OR IMPLIED BY PINAL COUNTY OR ITS EMPLOYEES. THIS MAP IS COMPILED FROM OFFICIAL RECORDS, INCLUDING PLATS, SURVEYS, RECORDED DEEDS AND CONTRACTS, AND ONLY CONTAINS INFORMATION REQUIRED FOR THE PINAL COUNTY ASSESSOR'S OFFICE PURPOSES.