

SEC. 03 NE, TN.6S RG.2E

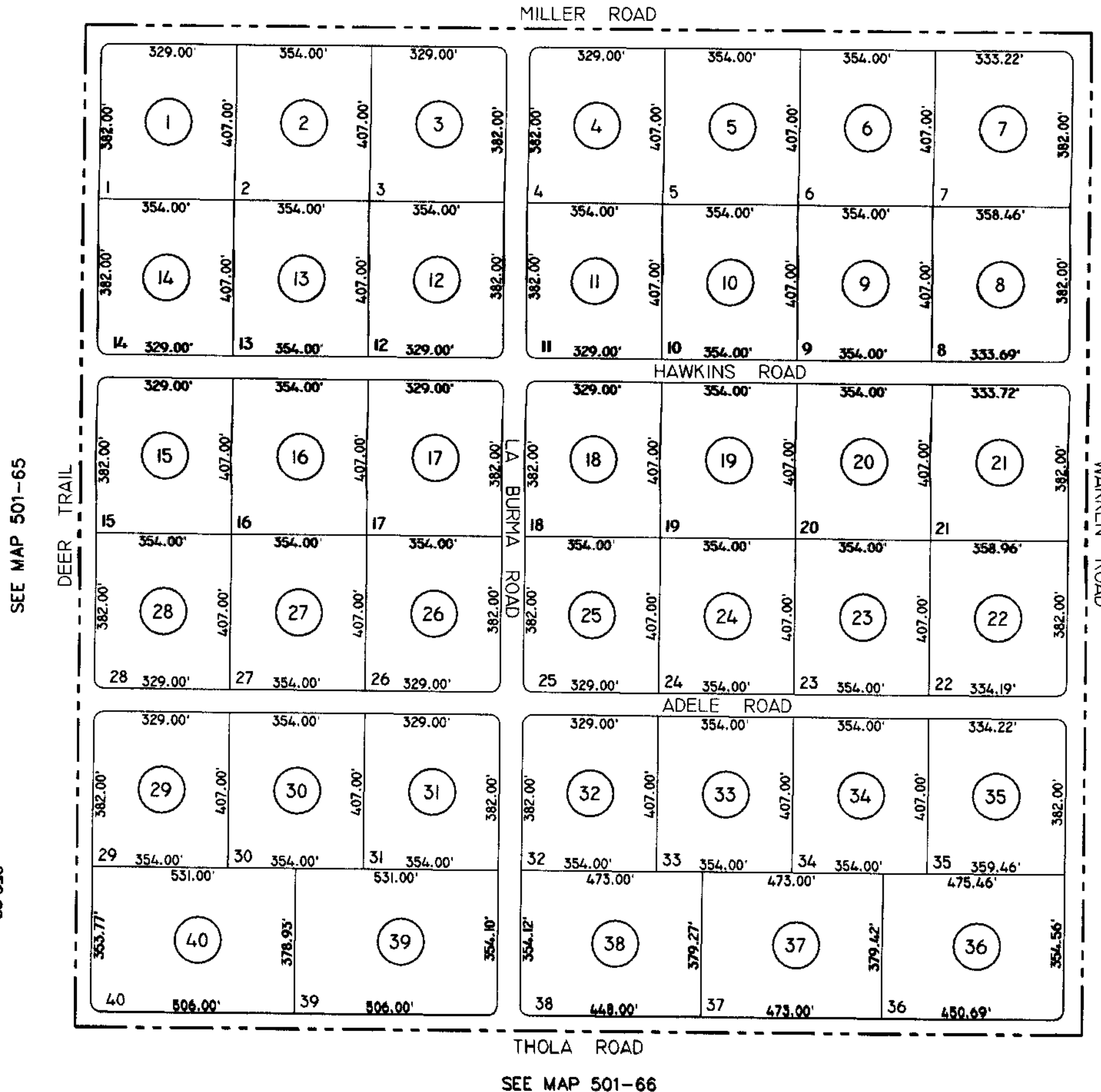
SEE MAP 510-67

501-44

THIS MAP IS FOR TAX PURPOSES ONLY.
THIS OFFICE WILL NOT ASSUME LIABILITY FOR
REPRESENTATION, MEASUREMENTS OR ACREAGE.

THE ORIGINAL PLAT OF THIS SUBDIVISION IS
ON FILE WITH THE PINAL COUNTY RECORDERS
OFFICE, FOR COMPLETE INFORMATION OF PLAT
AND CC&R'S CALL (520) 868-7100.

**HIDDEN VALLEY
FARMETTES
BK.13 - PG.26**

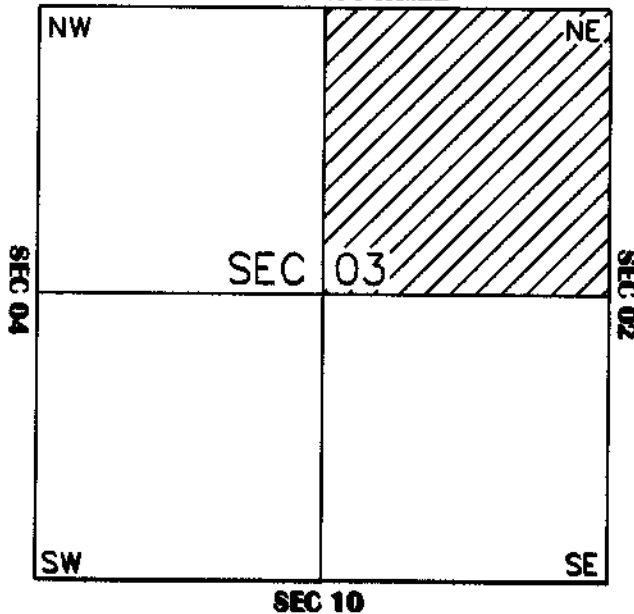


SEE MAP 501-65

SEE MAP 501-01

VICINITY MAP

SEC 34 TN.5S RG.2E



SCALE: 1" = 300'

5-30-2001

SEE MAP 501-66

PINAL COUNTY ASSESSORS MAP