

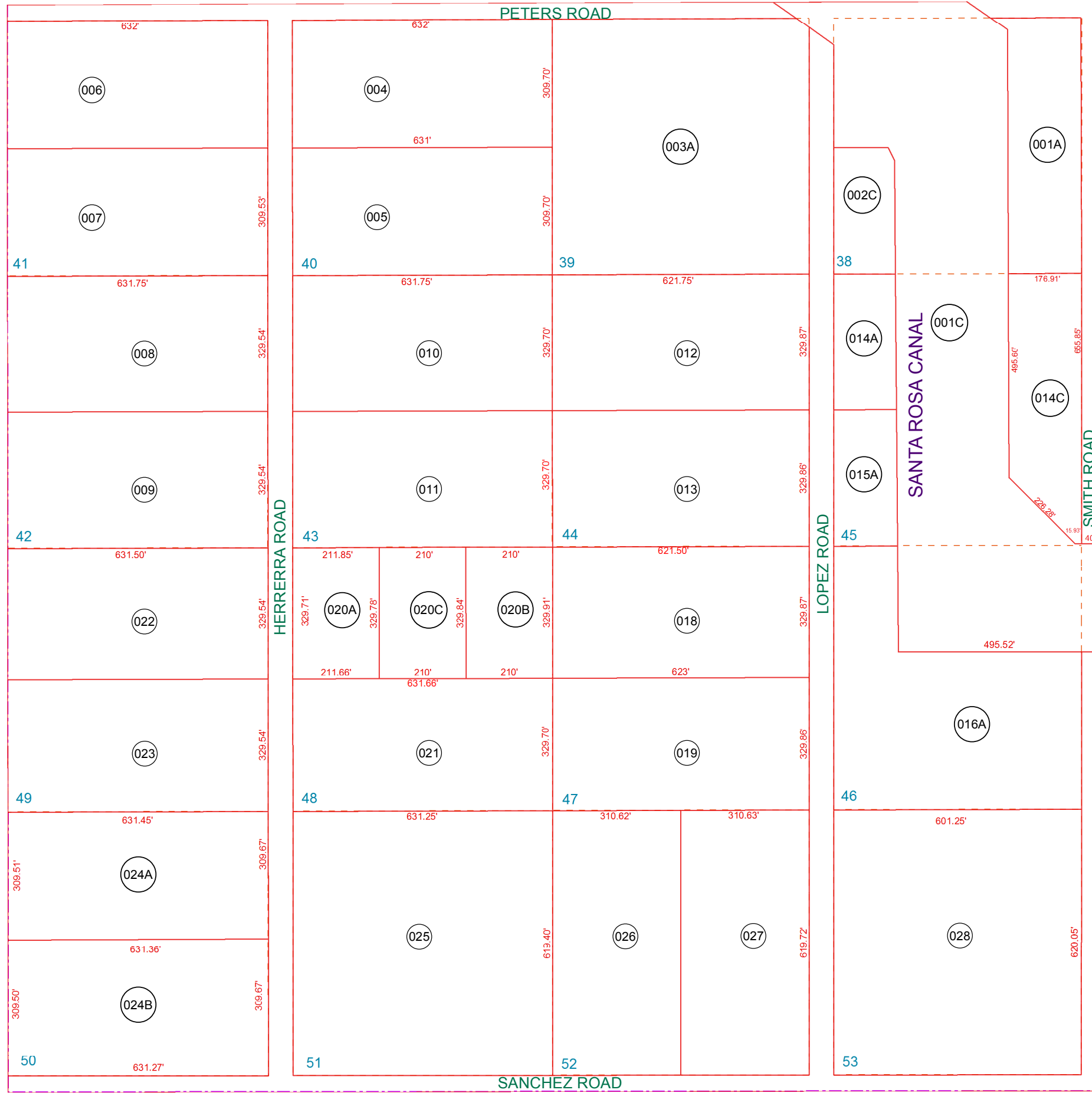
SEE MAP 501-34

NE CORNER

PETERS ROAD

SEE MAP 501-15

SEE MAP 501-42



SANCHEZ ROAD

SEE MAP 501-15

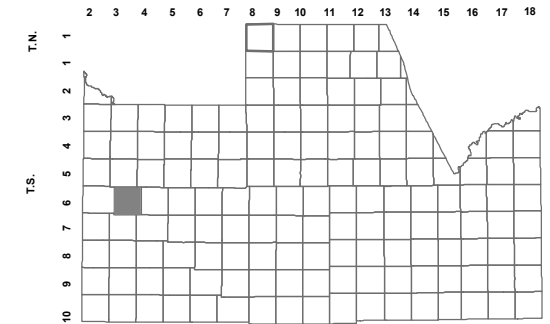
BOOK - MAP

501-41

NE SEC. 33 T.06S. R.03E.

HIDDEN VALLEY ESTATES UNIT 5: BK 9 PG 039

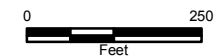
LOCATION MAPS
R.E.



TOWNSHIP
MILLER RD

6	5	4	3	2	TEST TRACK 1
7	8	9	10	11	12
18	17	16	15	14	13
19	20	21	22	23	24
30	29	28	27	26	25
31	32	33	34	35	36

Labels around the table: AMARILLO VALLEY RD, GREEN RD, MARICOPA RD, KORTSEN RD, PORTER RD, CLAYTON RD, SMITH RD, MEADOWVIEW RD, HWY 84, WHITE & PARKER RD, SILA BEAD HWY, PIEDRA RD, SECTION, SELMA HWY, FLOUVA RD.



Revised: 7/13/2017

By: DW



PINAL COUNTY
wide open opportunity

Pinal County Assessor

THIS MAP DOES NOT REPRESENT A SURVEY. NO LIABILITY IS ASSUMED FOR THE ACCURACY OF THE DATA DELINEATED HEREIN, EITHER EXPRESSED OR IMPLIED BY PINAL COUNTY OR ITS EMPLOYEES. THIS MAP IS COMPILED FROM OFFICIAL RECORDS, INCLUDING PLATS, SURVEYS, RECORDED DEEDS AND CONTRACTS, AND ONLY CONTAINS INFORMATION REQUIRED FOR THE PINAL COUNTY ASSESSOR'S OFFICE PURPOSES.