

SEC. 35 NW, TN.6S RG.2E

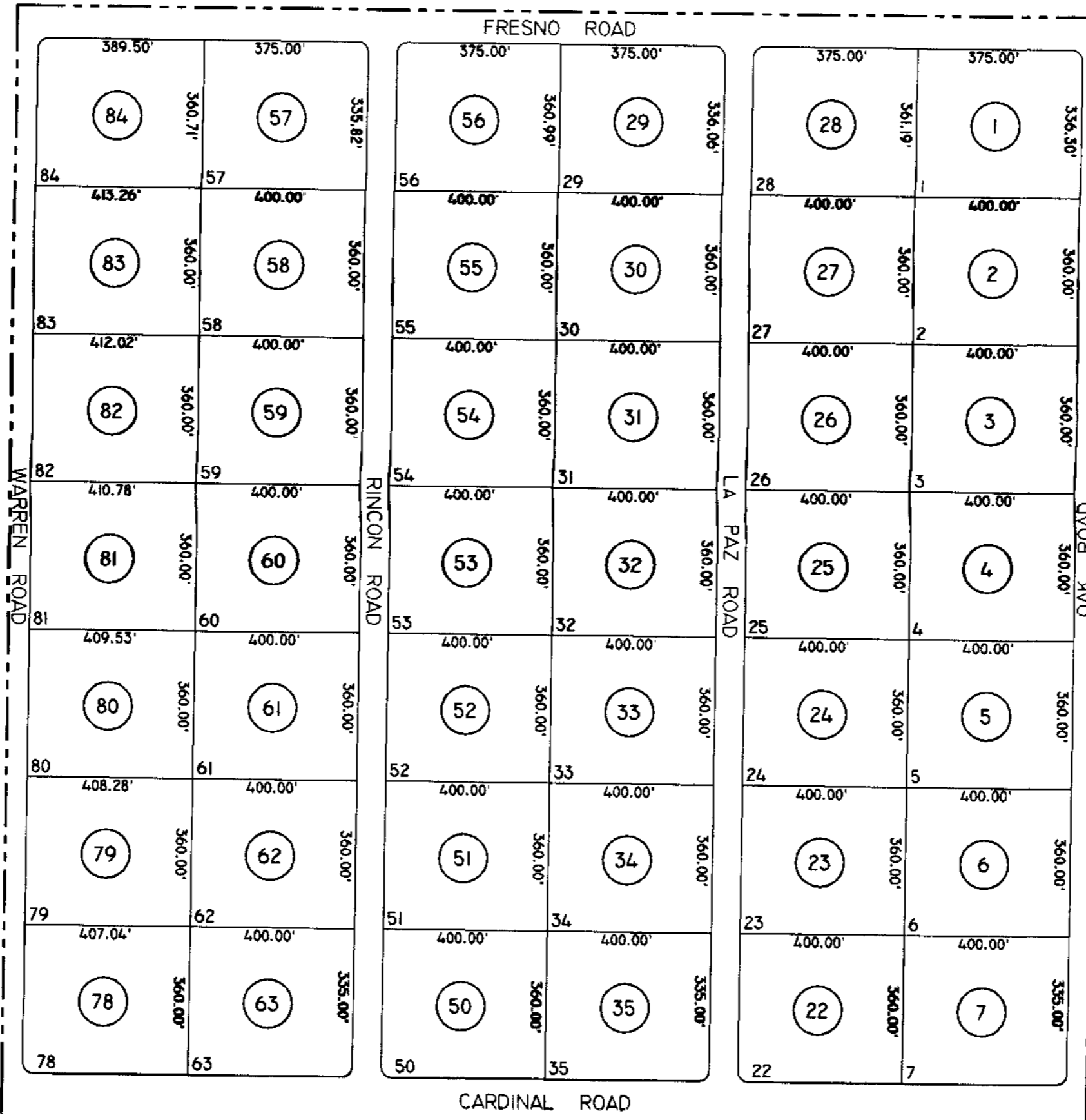
SEE MAP 501-45

THIS MAP IS FOR TAX PURPOSES ONLY.
THIS OFFICE WILL NOT ASSUME LIABILITY FOR
REPRESENTATION, MEASUREMENTS OR ACREAGE.

THE ORIGINAL PLAT OF THIS SUBDIVISION IS
ON FILE WITH THE PINAL COUNTY RECORDERS
OFFICE, FOR COMPLETE INFORMATION OF PLAT
AND CC&R's CALL (520) 868-7100.

501-14 1/2

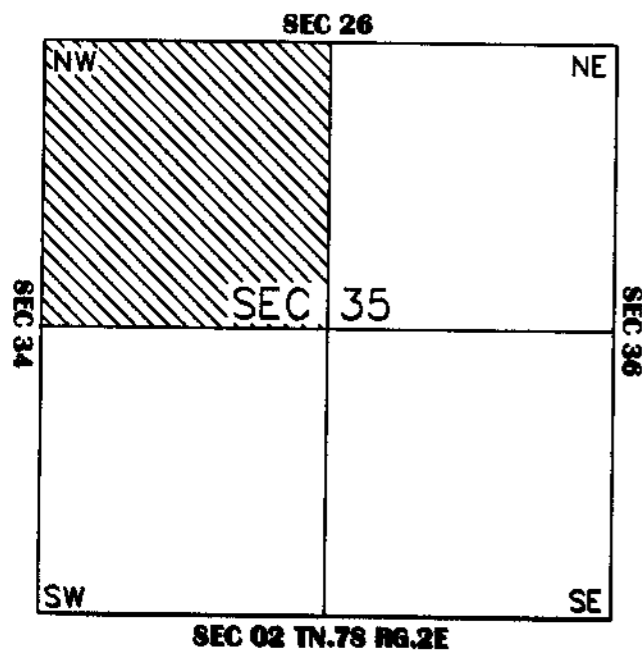
HIDDEN VALLEY ESTATES UNIT 9 BK.13 - PG.21



SEE MAP 501-60

SEE MAP 501-43

VICINITY MAP



SCALE: 1" = 300'

5-30-2001

CARDINAL ROAD
SEE MAP 501-14 2/2