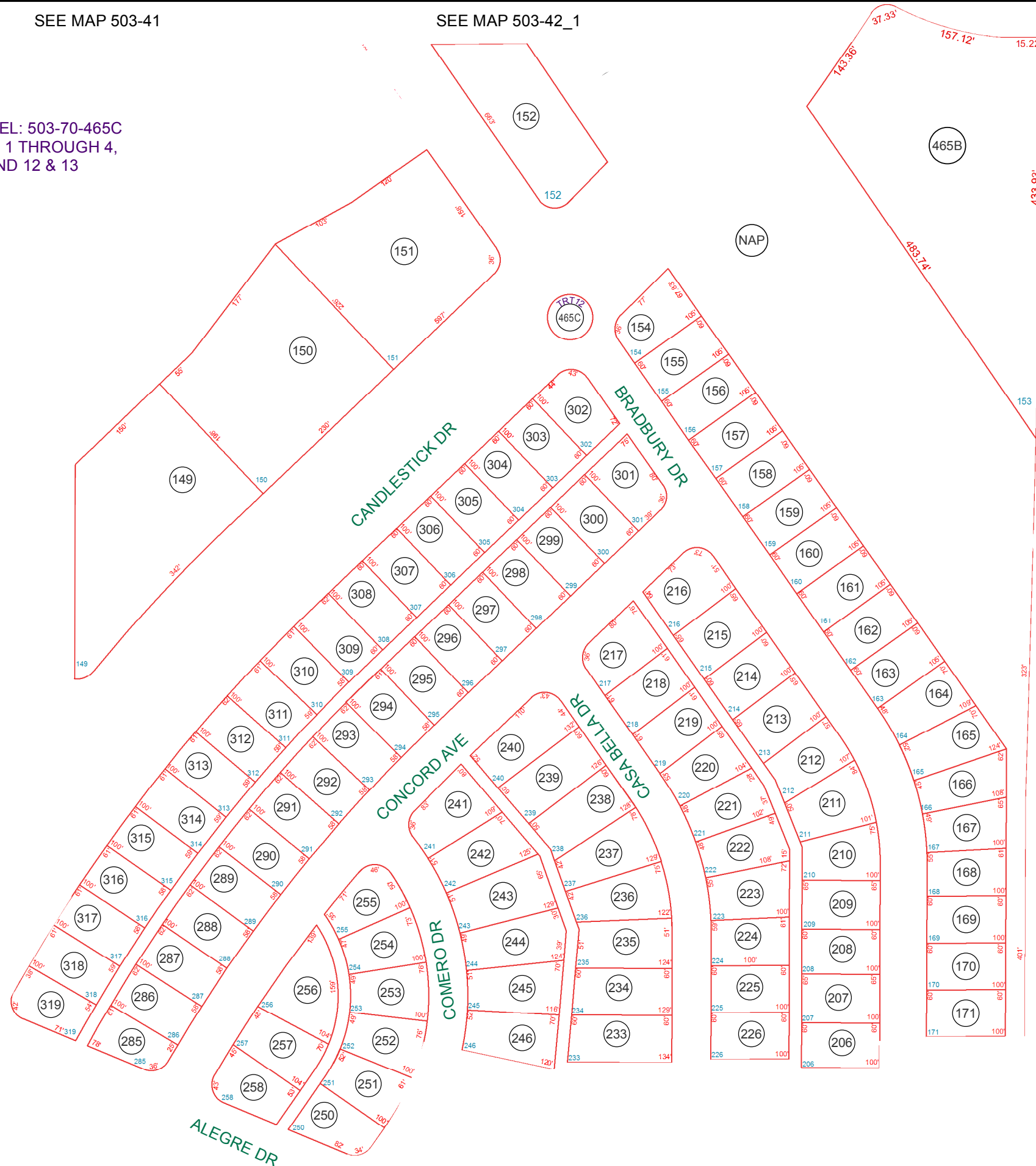


SEE MAP 503-41

SEE MAP 503-42_1

COMMON AREA PARCEL: 503-70-465C
ASSESSOR'S TRACTS 1 THROUGH 4,
6 THROUGH 8 AND 12 & 13



SEE MAP 503-70_3

SEE MAP 503-41

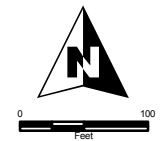
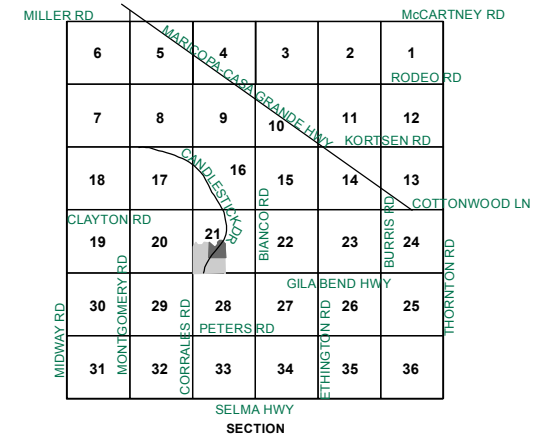
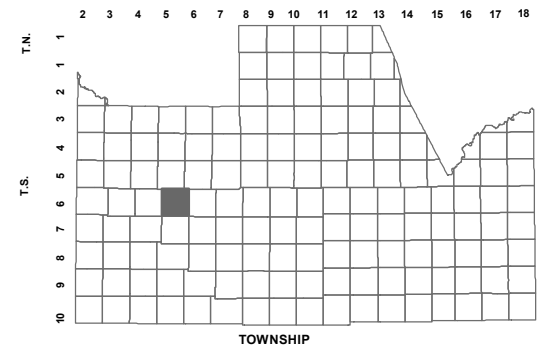
SEE MAP 503-70_1

BOOK - MAP

503-70_4

NE SW SEC. 21 T.06S. R.05E.
DESERT CARMEL SECTION A
BK 14 - PG 021

LOCATION MAPS



Revised: 9/01/2016

By: HY



PINAL COUNTY
wide open opportunity

Pinal County Assessor

THIS MAP DOES NOT REPRESENT A SURVEY. NO LIABILITY IS ASSUMED FOR THE ACCURACY OF THE DATA DELINEATED HEREIN, EITHER EXPRESSED OR IMPLIED BY PINAL COUNTY OR ITS EMPLOYEES. THIS MAP IS COMPILED FROM OFFICIAL RECORDS, INCLUDING PLATS, SURVEYS, RECORDED DEEDS AND CONTRACTS, AND ONLY CONTAINS INFORMATION REQUIRED FOR THE PINAL COUNTY ASSESSOR'S OFFICE PURPOSES.