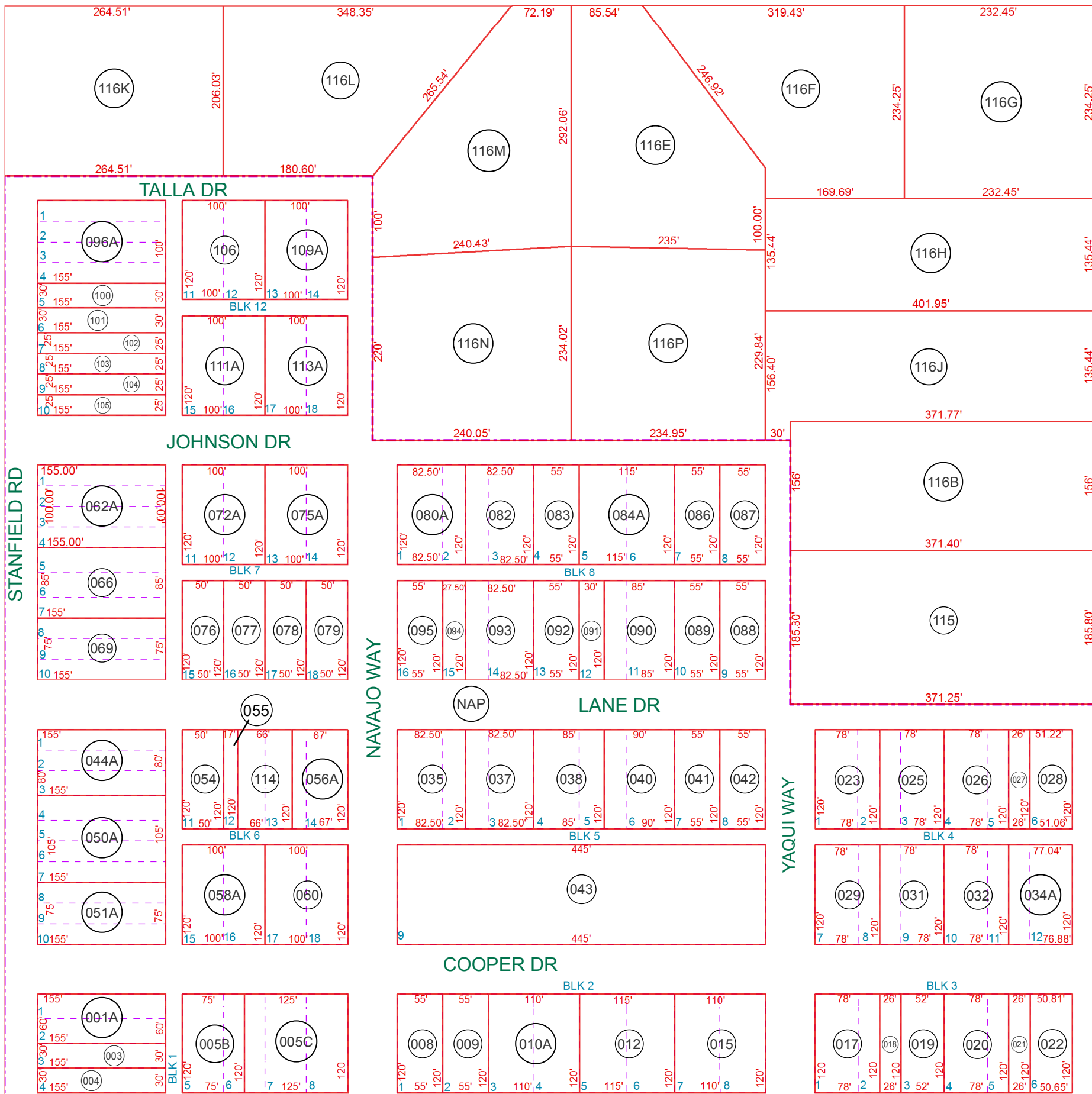


SEE MAP 503-14



SEE MAP 503-16

SEE MAP 503-10

SEE MAP 503-14

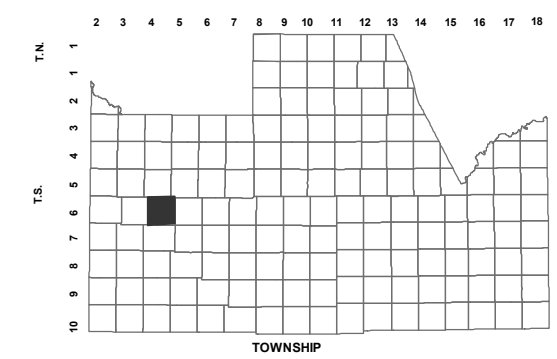
BOOK - MAP

503-15

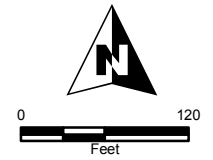
NW SW SEC. 20 T.06S. R.04E.

COOPERS SUBDIVISION:
BK. 08 - PG. 006

LOCATION MAPS
R.E.



MILLER RD					
6	5	4	3	2	1
7	8	9	10	11	12
STANFIELD RD		ANDERSON RD		MILLIGAN RD	
18	17	16	15	14	13
FLUJIA RD		STATE HWY 84		CLAYTON RD	
19	20	21	22	23	24
INDIAN VALLEY RD		MIDWAY RD			
30	29	28	27	26	25
PETERS RD		SELMA HWY			
31	32	33	34	35	36
SECTION					



Revised: 5/31/2018

By: **MBG**



PINAL COUNTY
WIDE OPEN OPPORTUNITY

Pinal County Assessor

THIS MAP DOES NOT REPRESENT A SURVEY. NO LIABILITY IS ASSUMED FOR THE ACCURACY OF THE DATA DELINEATED HEREIN, EITHER EXPRESSED OR IMPLIED BY PINAL COUNTY OR ITS EMPLOYEES. THIS MAP IS COMPILED FROM OFFICIAL RECORDS, INCLUDING PLATS, SURVEYS, RECORDED DEEDS AND CONTRACTS, AND ONLY CONTAINS INFORMATION REQUIRED FOR THE PINAL COUNTY ASSESSOR'S OFFICE PURPOSES.