

SEE MAP 504-02\_1

MCCARTNEY RANCH PARCEL 4  
AMENDED  
SEE MAP 504-78\_3

MCCARTNEY RANCH PARCEL 5  
SEE MAP 504-78\_4

MCCARTNEY RANCH PARCEL 6  
SEE MAP 504-78\_5

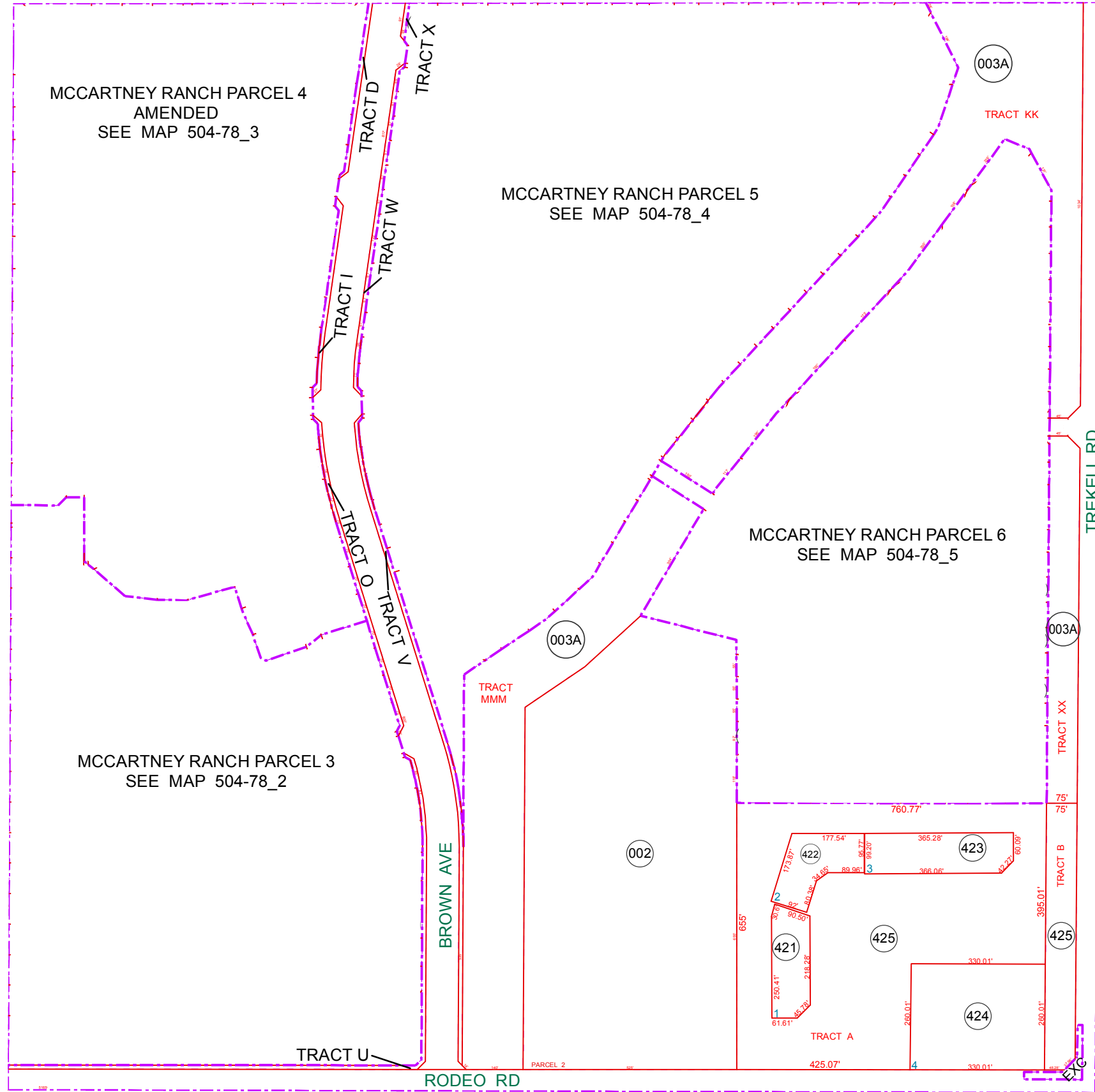
MCCARTNEY RANCH PARCEL 3  
SEE MAP 504-78\_2

SEE MAP 504-02\_1

SEE MAP 504-68

SEE MAP 504-71

TRACTS: D, I, KK, MMM, O, U, W, X & XX  
UNDER PARCEL 504-78-003A



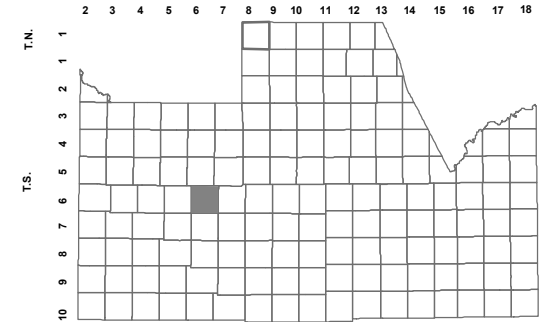
BOOK - MAP

# 504-78\_1

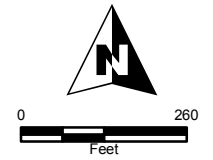
SE SEC. 5 T.06S. R.06E.

MCCARTNEY RANCH:  
CABINET F - SLIDE 66  
MCCARTNEY RANCH CROSSINGS:  
2011-100577 & 2012-094791

LOCATION MAPS  
R.E.



TOWNSHIP					
McCartney Rd					
6	5	4	3	2	1
7	8	9	10	11	12
18	17	16	15	14	13
19	20	21	22	23	24
30	29	28	27	26	25
31	32	33	34	35	36
SECTION					
Selma Hwy					



Revised: 11/15/2012

By: YL



PINAL COUNTY  
wide open opportunity

Pinal County Assessor

THIS MAP DOES NOT REPRESENT A SURVEY. NO LIABILITY IS ASSUMED FOR THE ACCURACY OF THE DATA DELINEATED HEREIN, EITHER EXPRESSED OR IMPLIED BY PINAL COUNTY OR ITS EMPLOYEES. THIS MAP IS COMPILED FROM OFFICIAL RECORDS, INCLUDING PLATS, SURVEYS, RECORDED DEEDS AND CONTRACTS, AND ONLY CONTAINS INFORMATION REQUIRED FOR THE PINAL COUNTY ASSESSOR'S OFFICE PURPOSES.