

SEC. 18 TN.6S RG.6E

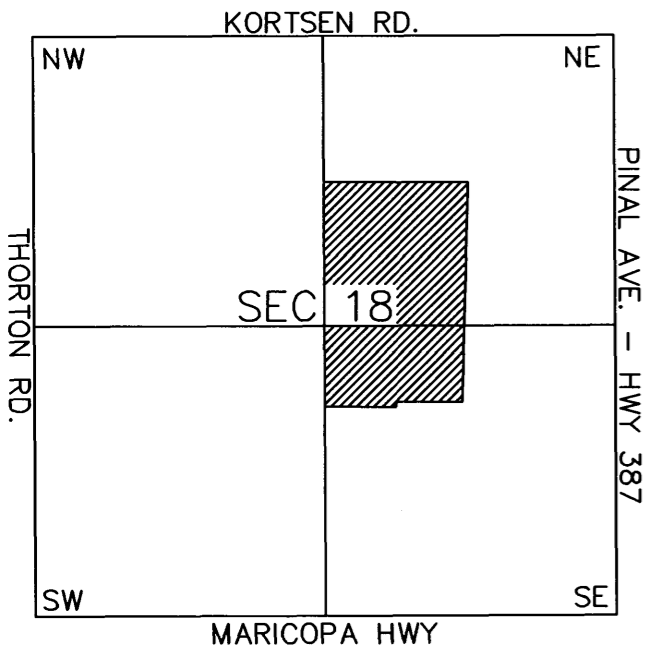
AREA CODE
0000

SPECIAL DISTRICTS
00000
00000

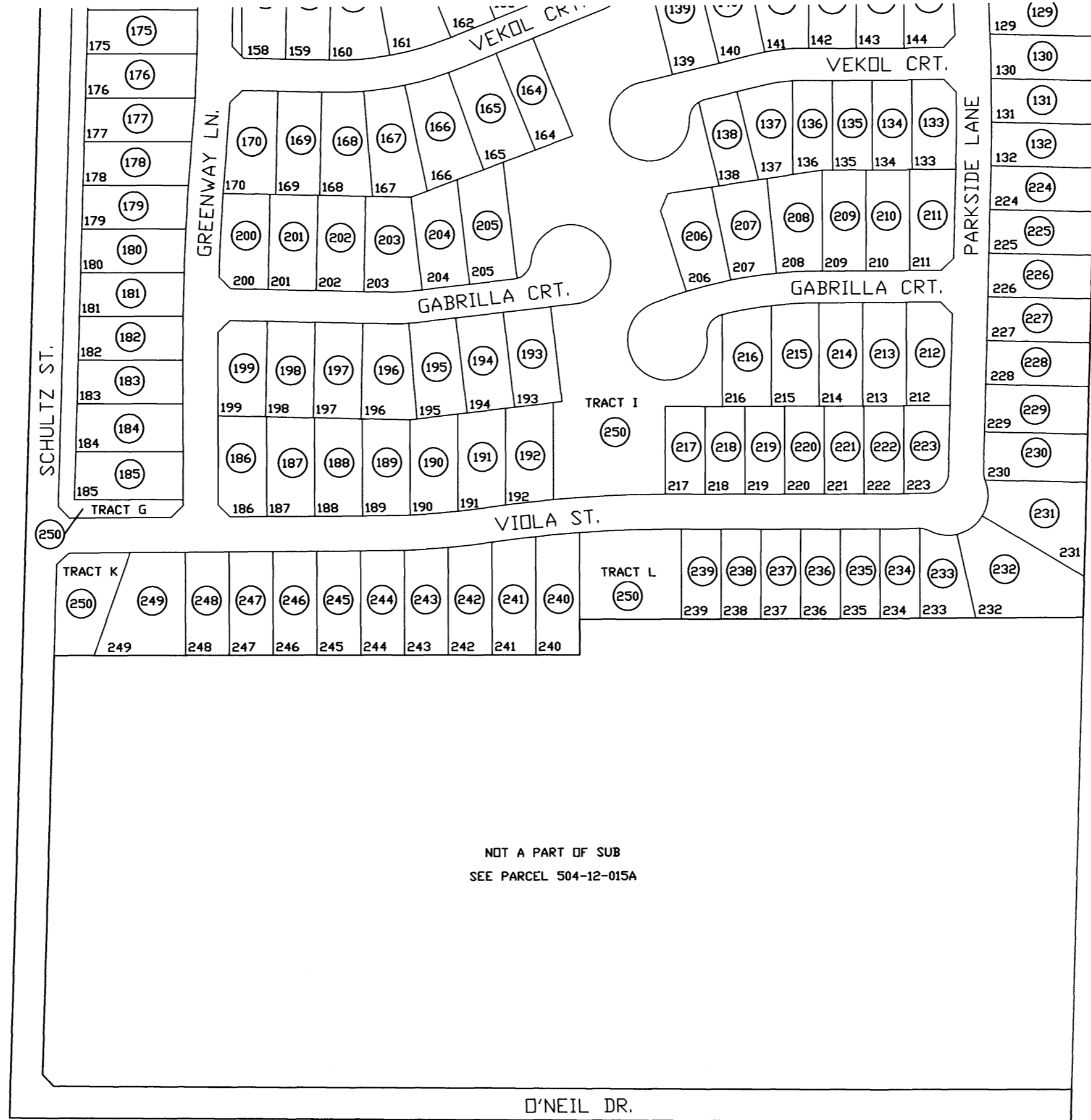
THIS MAP IS FOR TAX PURPOSES ONLY.
THIS OFFICE WILL NOT ASSUME LIABILITY FOR
REPRESENTATION, MEASUREMENTS OR ACREAGE.

CANCELED PARCELS
504-12-015, 016

VICINITY MAP



SEE MAP 504-13



SEE MAP 504-77_1

504-77
2/2

DESERT CROSSING
CAB. D - SLD. 062

THE ORIGINAL PLAT OF THIS SUBDIVISION IS
ON FILE WITH THE PINAL COUNTY RECORDERS
OFFICE, FOR COMPLETE INFORMATION OF PLAT
AND CC&R's CALL (520) 868-7100.

SEE MAP 504-12



SCALE: 1" = 150'

07-22-2002

SEE MAP 504-14