

SEC. 17 TN.06S RG.06E

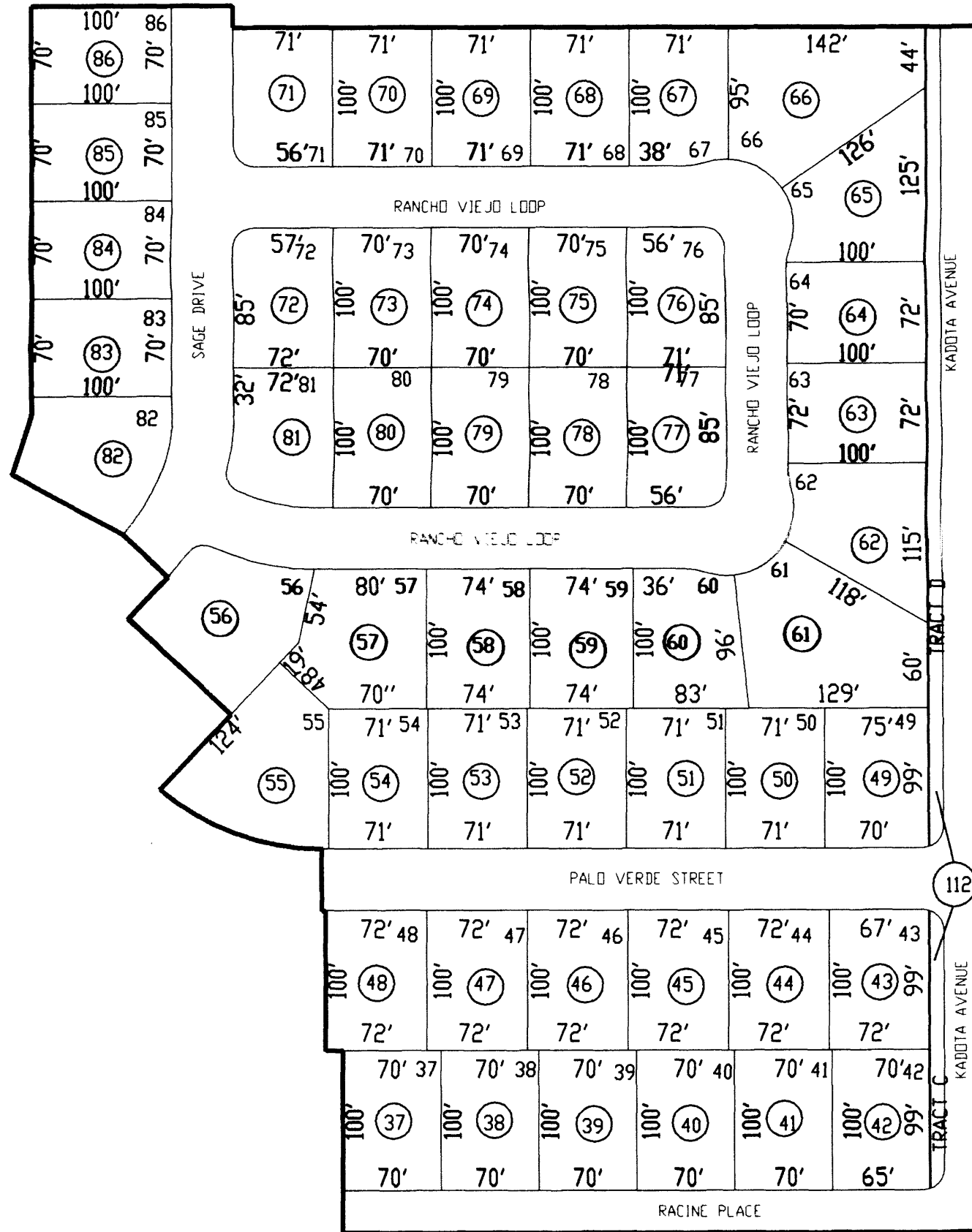
SEE MAP 504-70

504-69

AREA CODE
0486

SPECIAL DISTRICTS
24001

THIS MAP IS FOR TAX PURPOSES ONLY.
THIS OFFICE WILL NOT ASSUME LIABILITY FOR
REPRESENTATION, MEASUREMENTS OR ACREAGE.



SEE MAP 504-44

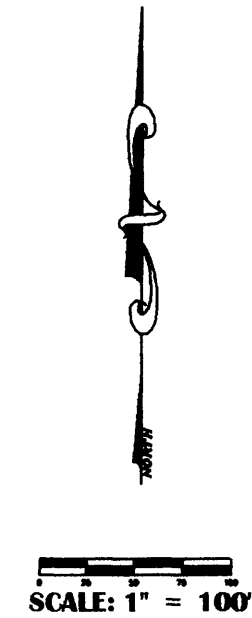
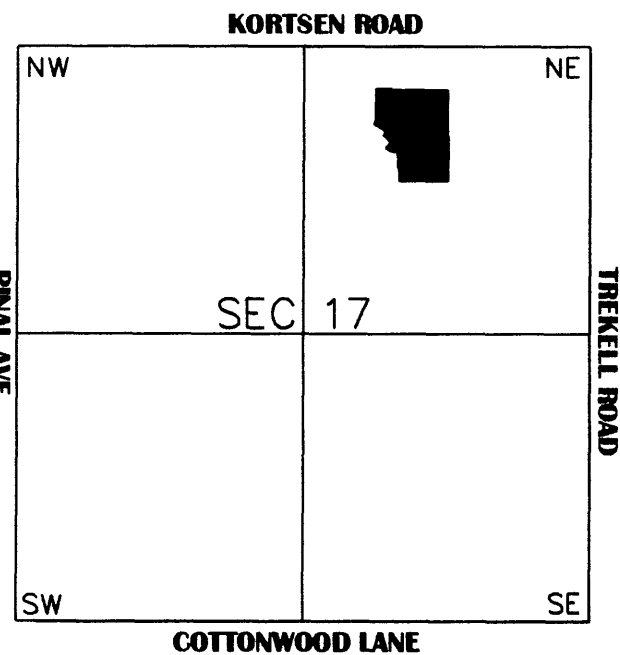
SEE MAP 504-45

SEE MAP 504-36

RANCHO PALO VERDE ESTATES PHASE III CAB "C" SLIDE 188

THE ORIGINAL PLAT OF THIS SUBDIVISION IS
ON FILE WITH THE PINAL COUNTY RECORDERS
OFFICE, FOR COMPLETE INFORMATION OF PLAT
AND C&R's CALL (520) 868-7100.

VICINITY MAP



02-15-2001