

**SEC. 5 TN.6S RG.6E**

SEE MAP 504-55

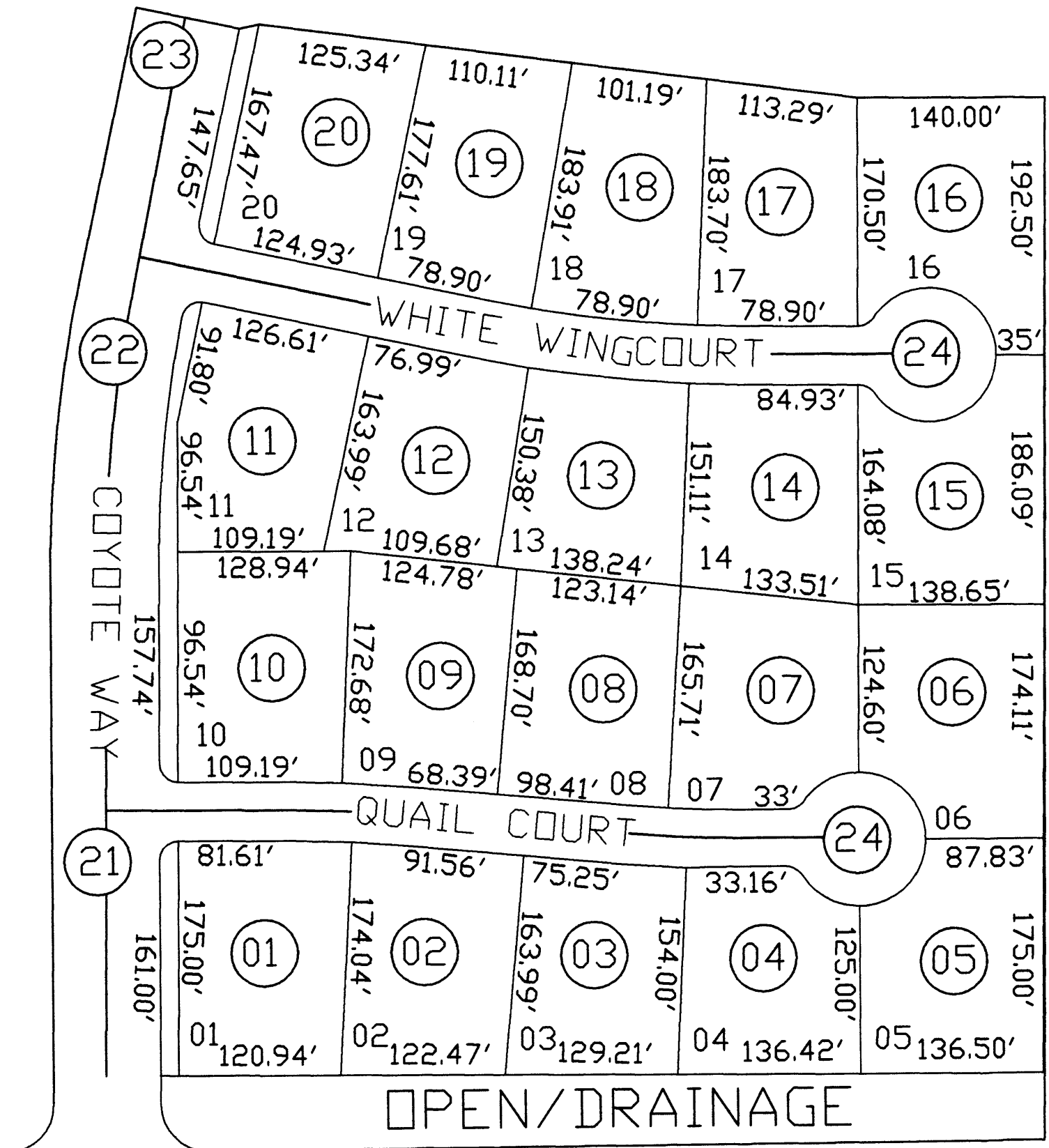
**504-55**

**QUAIL RUN - UNIT I  
CAB "C" SLIDE: 23**

**AREA CODE**  
0000  
0000  
0000  
**SPECIAL DISTRICTS**  
0000  
0000

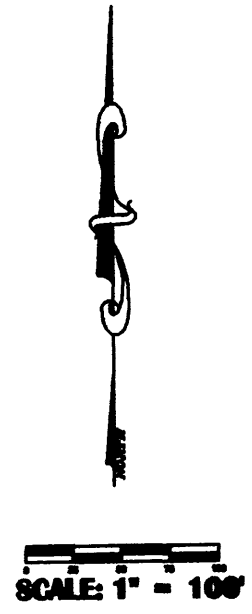
Lot	Area	Acres
01	21,799.89	.39
02	21,244.28	.29
03	20,637.80	.26
04	19,639.00	.25
05	20,231.91	.26
06	22,232.60	.28
07	20,239.00	.26
08	20,473.00	.27
09	21,799.89	.30
10	21,244.28	.29
11	21,600.00	.29
12	19,166.40	.24
13	20,473.00	.27
14	21,799.89	.30
15	20,473.00	.27
16	20,473.00	.27
17	20,473.00	.27
18	20,473.00	.27
19	20,473.00	.27
20	20,473.00	.27
21	20,473.00	.27
22	20,473.00	.27
23	20,473.00	.27
24	20,473.00	.27
25	20,473.00	.27
26	20,473.00	.27
27	20,473.00	.27
28	20,473.00	.27
29	20,473.00	.27
30	20,473.00	.27
31	20,473.00	.27
32	20,473.00	.27
33	20,473.00	.27
34	20,473.00	.27
35	20,473.00	.27
36	20,473.00	.27
37	20,473.00	.27
38	20,473.00	.27
39	20,473.00	.27
40	20,473.00	.27
41	20,473.00	.27
42	20,473.00	.27
43	20,473.00	.27
44	20,473.00	.27
45	20,473.00	.27
46	20,473.00	.27
47	20,473.00	.27
48	20,473.00	.27
49	20,473.00	.27
50	20,473.00	.27
51	20,473.00	.27
52	20,473.00	.27
53	20,473.00	.27
54	20,473.00	.27
55	20,473.00	.27
56	20,473.00	.27
57	20,473.00	.27
58	20,473.00	.27
59	20,473.00	.27
60	20,473.00	.27
61	20,473.00	.27
62	20,473.00	.27
63	20,473.00	.27
64	20,473.00	.27
65	20,473.00	.27
66	20,473.00	.27
67	20,473.00	.27
68	20,473.00	.27
69	20,473.00	.27
70	20,473.00	.27
71	20,473.00	.27
72	20,473.00	.27
73	20,473.00	.27
74	20,473.00	.27
75	20,473.00	.27
76	20,473.00	.27
77	20,473.00	.27
78	20,473.00	.27
79	20,473.00	.27
80	20,473.00	.27
81	20,473.00	.27
82	20,473.00	.27
83	20,473.00	.27
84	20,473.00	.27
85	20,473.00	.27
86	20,473.00	.27
87	20,473.00	.27
88	20,473.00	.27
89	20,473.00	.27
90	20,473.00	.27
91	20,473.00	.27
92	20,473.00	.27
93	20,473.00	.27
94	20,473.00	.27
95	20,473.00	.27
96	20,473.00	.27
97	20,473.00	.27
98	20,473.00	.27
99	20,473.00	.27
100	20,473.00	.27

SEE MAP 504-55



SEE MAP 504-06

SEE MAP 504-02



12-29-1999

**NOTES:**  
 THIS MAP IS FOR TAX PURPOSES ONLY.  
 THIS OFFICE WILL NOT ASSUME LIABILITY FOR REPRESENTATION, MEASUREMENTS OR ACREAGE.  
 LOT AND PARCEL NUMBERS ARE THE SAME.  
 THE ORIGINAL PLAT OF THIS SUBDIVISION IS ON FILE WITH THE PINAL COUNTY RECORDERS OFFICE, FOR COMPLETE INFORMATION OF PLAT AND CC&R, CALL (303) 866-7100.  
 FORMERLY 401-51-000C