

# SEC. 22, PT-NW, SW, TN.6S RG.6E

SEE MAP 505-22 1/3

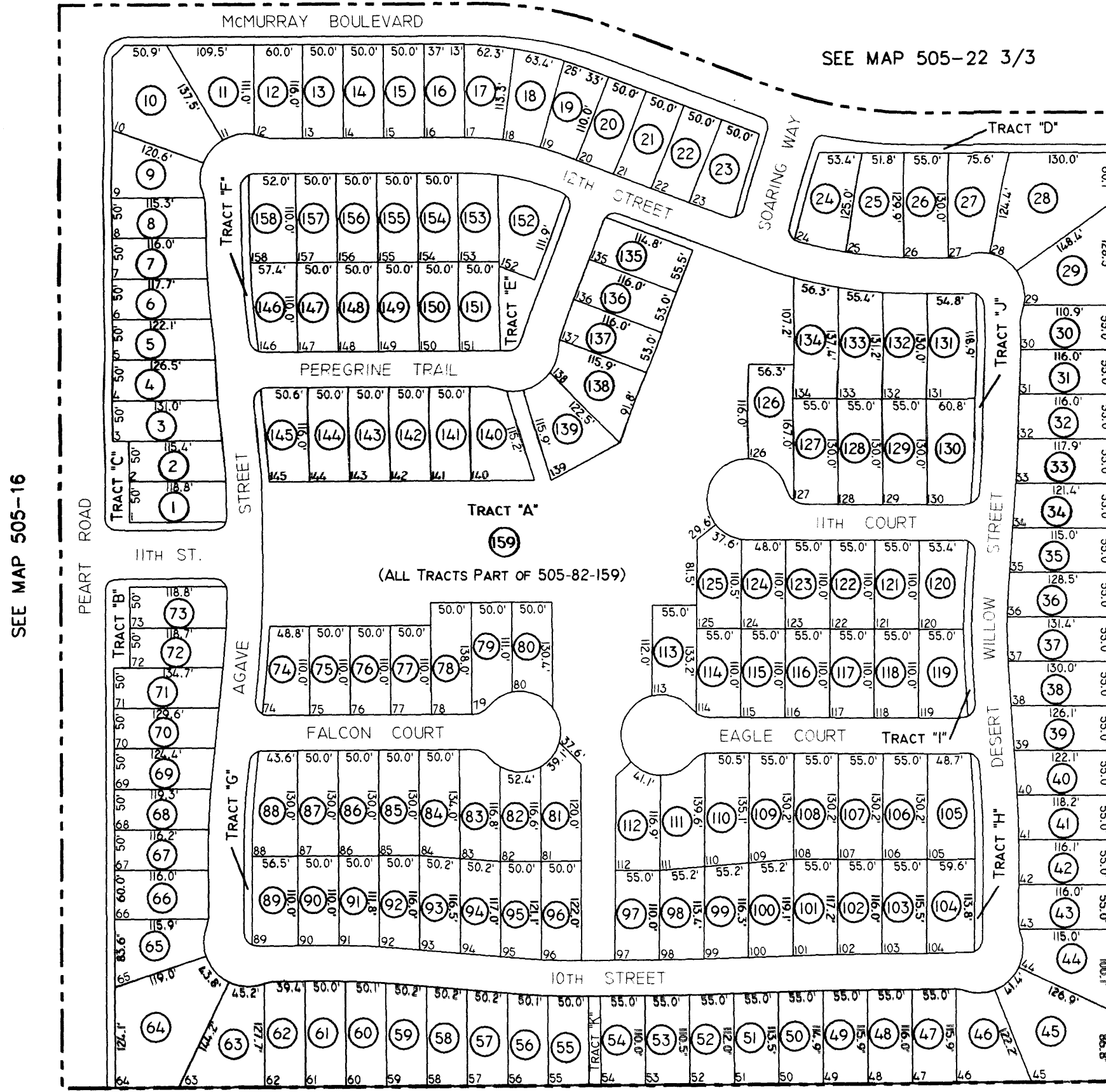
# 505-83

SILVER HAWK  
CAB."C" - SLD.138

THE ORIGINAL PLAT OF THIS SUBDIVISION IS ON FILE WITH THE PINAL COUNTY RECORDERS OFFICE, FOR COMPLETE INFORMATION OF PLAT AND CC&R's CALL (520) 868-7100.

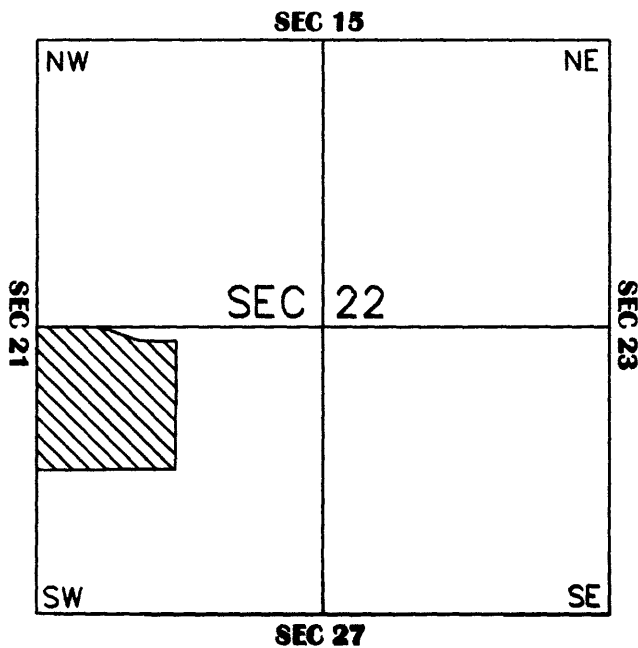
THIS MAP IS FOR TAX PURPOSES ONLY.

THIS OFFICE WILL NOT ASSUME LIABILITY FOR REPRESENTATION, MEASUREMENTS OR ACREAGE.



## VICINITY MAP

SEE MAP 505-16



SEE MAP 505-22 3/3



SCALE: 1" = 150'

3-6-2001

SEE MAP 505-22 3/3

PINAL COUNTY ASSESSORS MAP