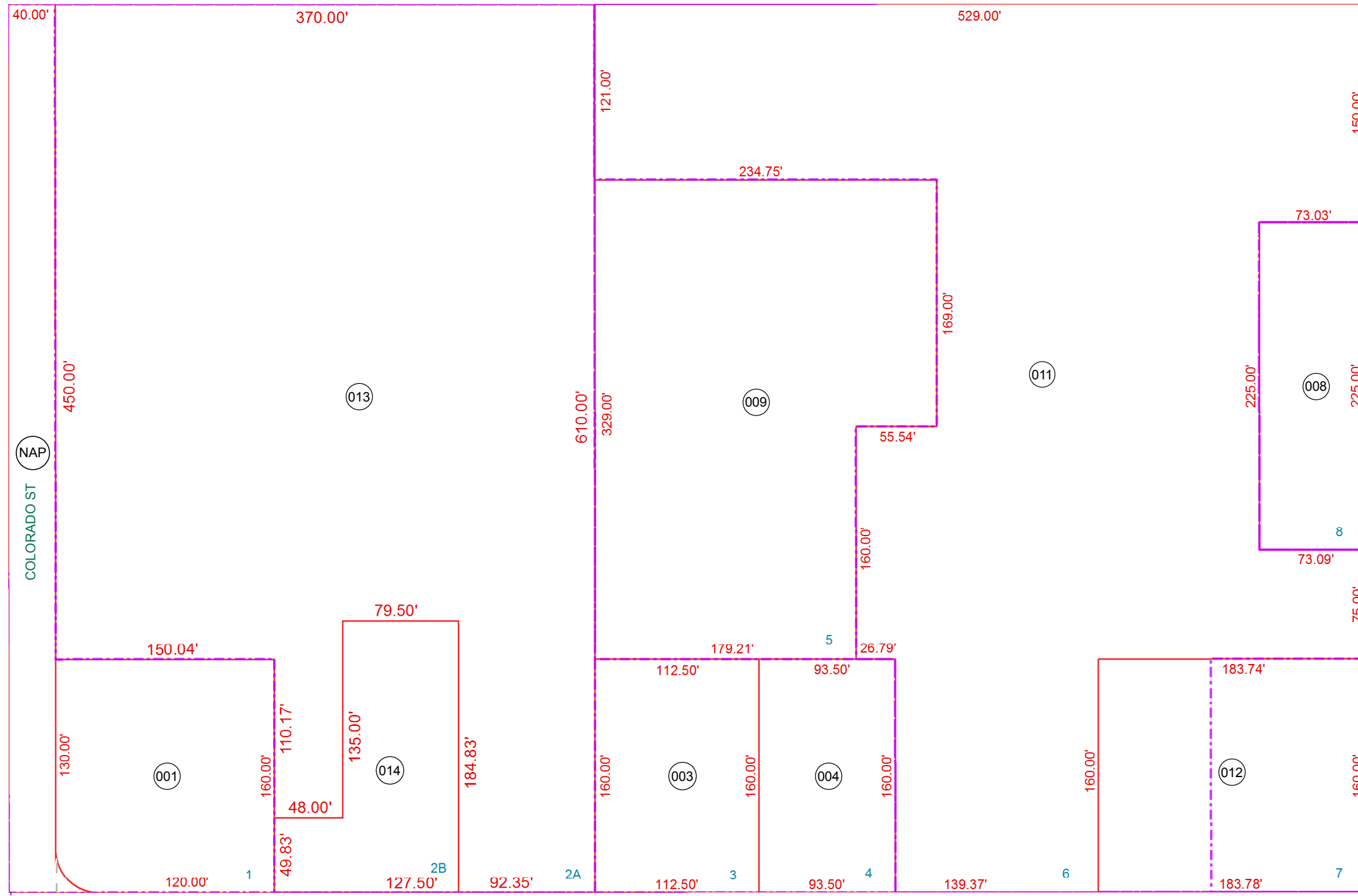


SEE MAP 505-16_1



SEE MAP 505-20_1

SEE MAP 505-16_1

50' S/4 CORNER SEC 21

FLORENCE BLVD

SEE MAP 505-30

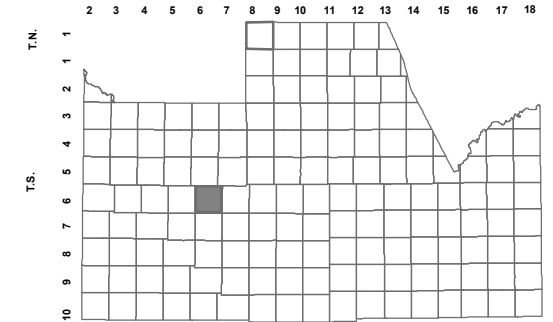
BOOK - MAP

505-46

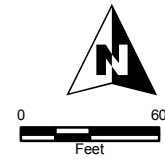
S2 SW SE SEC. 21 T.06S. R.06E.

CASA GRANDE SHOPPING CENTER:
 CAB A - SLD 045
 RE-SUBDIVISION OF LOTS 5 & 6:
 2013-090228
 CASA GRANDE SHOPPING CENTER LOTS 6 AND 7:
 2014-066776
 CASA GRANDE SHOPPING CENTER - LOT 2:
 2016-068879

LOCATION MAPS
R.E.



McCARTNEY RD				
6	5	4	3	2
RODEO RD				
7	8	9	10	11
KORBEN RD				
18	17	16	15	14
COTTONWOOD LN				
19	20	21	22	23
STORREY RD				
30	29	28	27	26
FLORENCE BLVD HWY 287				
31	32	33	34	35
PETERS RD				
JIMMY DEAR BLVD				
SELMA HWY				
HENNESSY RD				
HARLEY RD				
HACIENDA RD				



Revised: 3/15/2017

By: MBG



PINAL COUNTY
wide open opportunity

Pinal County Assessor

THIS MAP DOES NOT REPRESENT A SURVEY. NO LIABILITY IS ASSUMED FOR THE ACCURACY OF THE DATA DELINEATED HEREIN, EITHER EXPRESSED OR IMPLIED BY PINAL COUNTY OR ITS EMPLOYEES. THIS MAP IS COMPILED FROM OFFICIAL RECORDS, INCLUDING PLATS, SURVEYS, RECORDED DEEDS AND CONTRACTS, AND ONLY CONTAINS INFORMATION REQUIRED FOR THE PINAL COUNTY ASSESSOR'S OFFICE PURPOSES.