

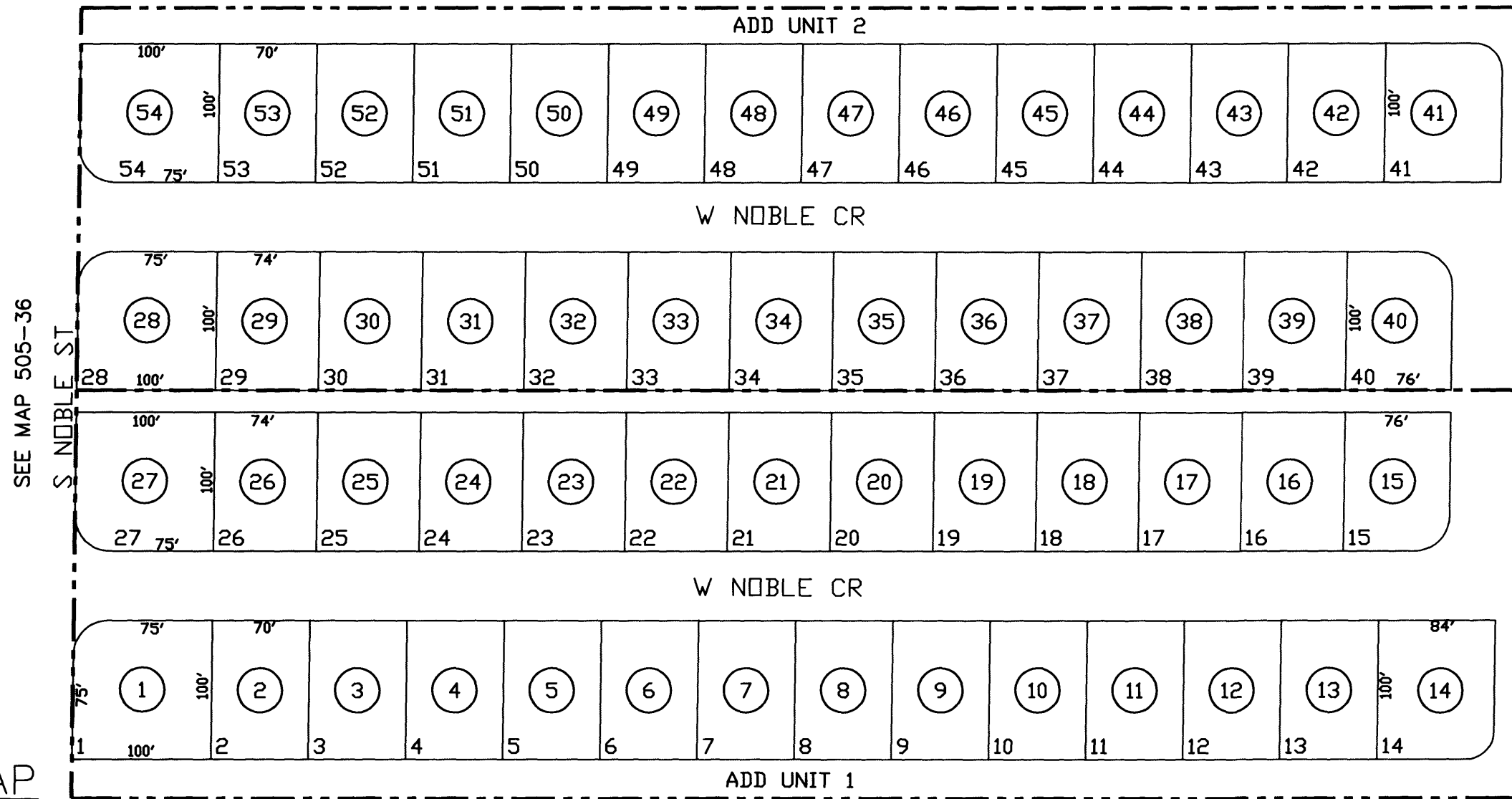
SEC. 34 SW NE TN.6S RG.6E

SEE MAP 505-35

505-41

AREA CODE
0000

SPECIAL DISTRICTS
00000
00000



ROBINSON'S ADDITION
UNIT 1

BK 15 - PG 047

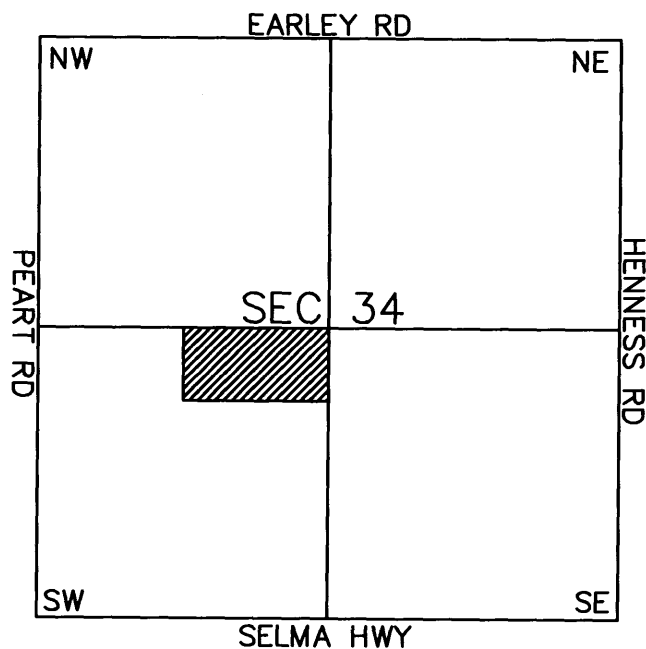
ROBINSON'S ADDITION
UNIT 2

BK 16 - PG 020

SEE MAP 505-36

SEE MAP 505-36

VICINITY MAP



SEE MAP 505-36

THE ORIGINAL PLAT OF THIS SUBDIVISION IS ON FILE WITH THE PINAL COUNTY RECORDERS OFFICE, FOR COMPLETE INFORMATION OF PLAT AND CC&R's CALL (520) 868-7100.

THIS MAP IS FOR TAX PURPOSES ONLY. THIS OFFICE WILL NOT ASSUME LIABILITY FOR REPRESENTATION, MEASUREMENTS OR ACREAGE.



SCALE: 1" = 100'

03-28-2003