

SEC. 20 NWSE TN.6S RG.6E

SEE MAP 506-03

506-08
2/2

AREA CODE

0000

SPECIAL DISTRICTS

00000

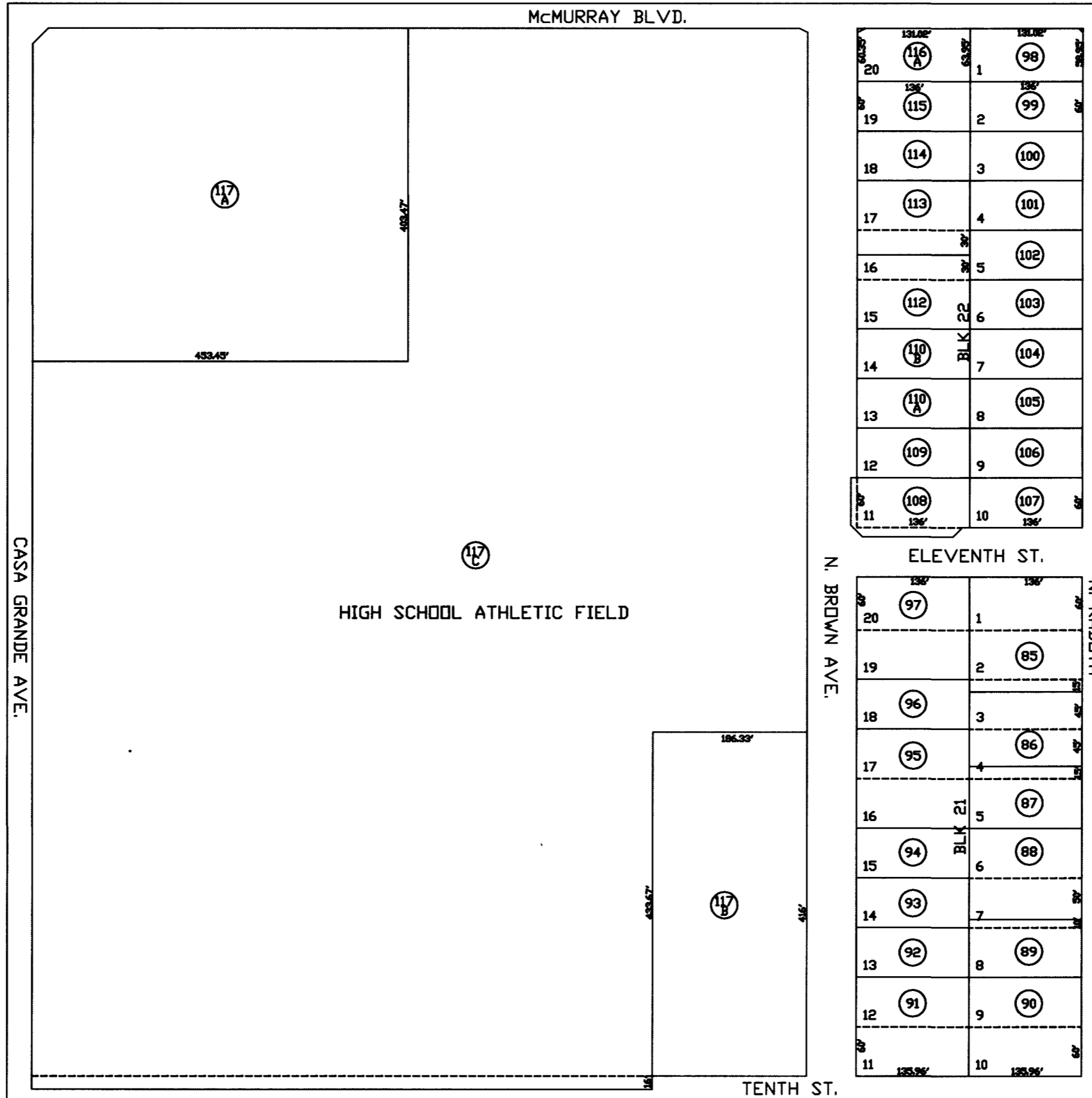
00000

THIS MAP IS FOR TAX PURPOSES ONLY.

THIS OFFICE WILL NOT ASSUME LIABILITY FOR REPRESENTATION, MEASUREMENTS OR ACREAGE.

THE ORIGINAL PLAT OF THIS SUBDIVISION IS ON FILE WITH THE PINAL COUNTY RECORDERS OFFICE, FOR COMPLETE INFORMATION OF PLAT AND CC&R's CALL (520) 868-7100.

SEE MAP 506-06



EVERGREEN ADDITION
BK 02 - SLD 036

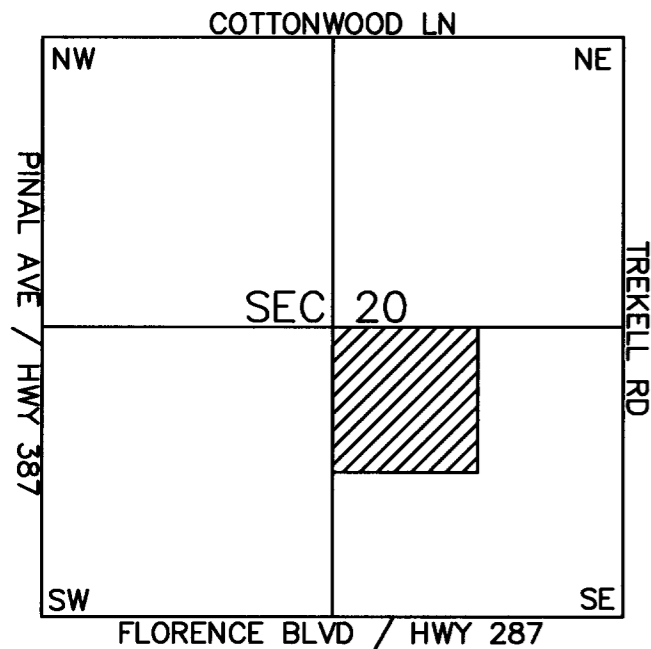
SEE MAP 506-09_1



SCALE: 1" = 150'

04-04-2003

VICINITY MAP



SEE MAP 506-08_1