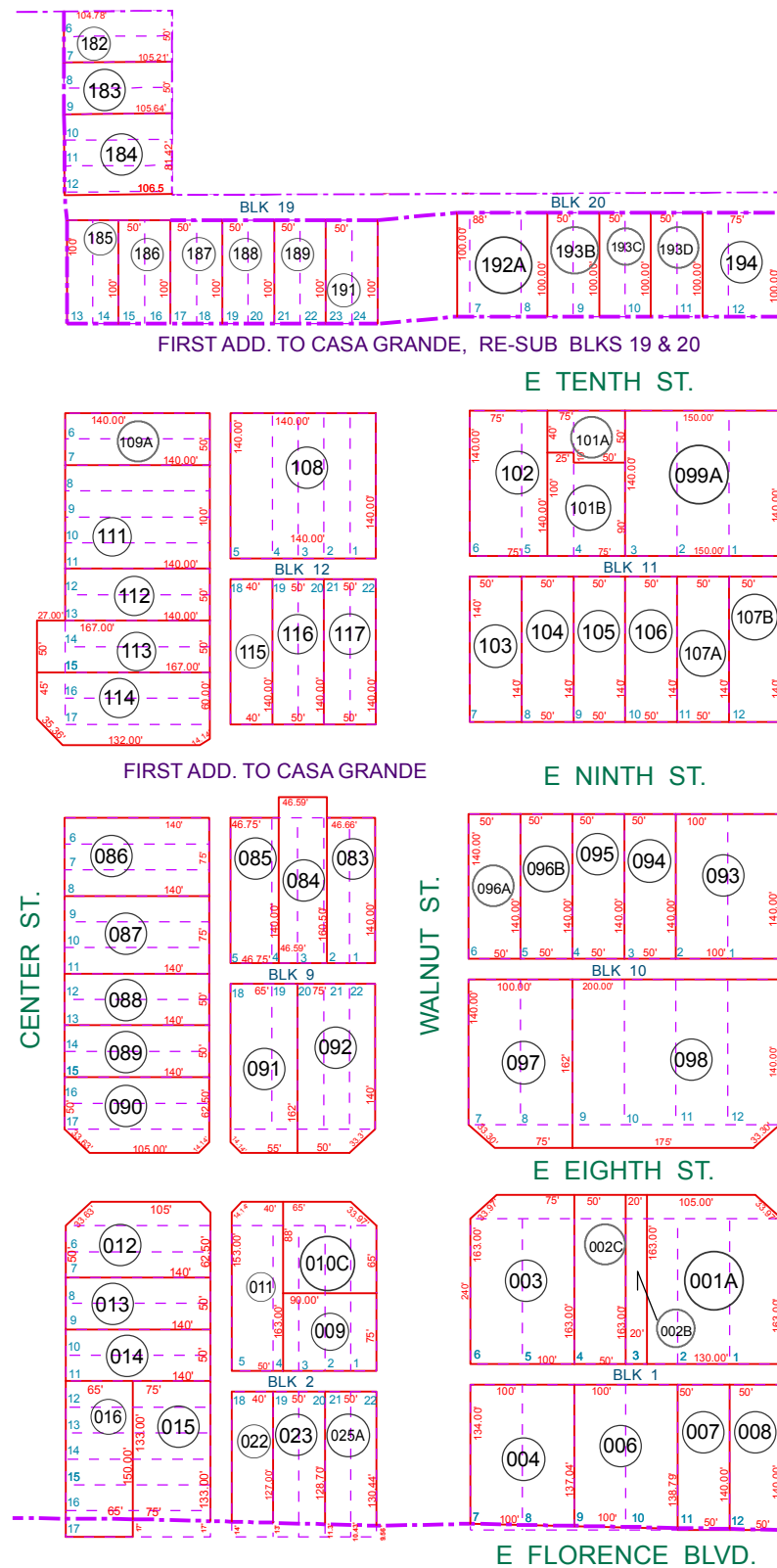
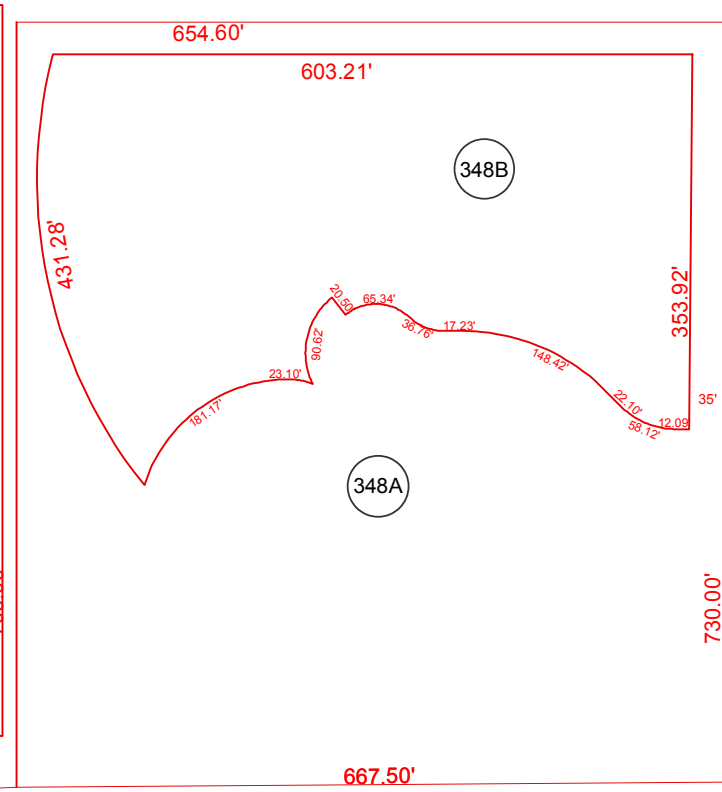
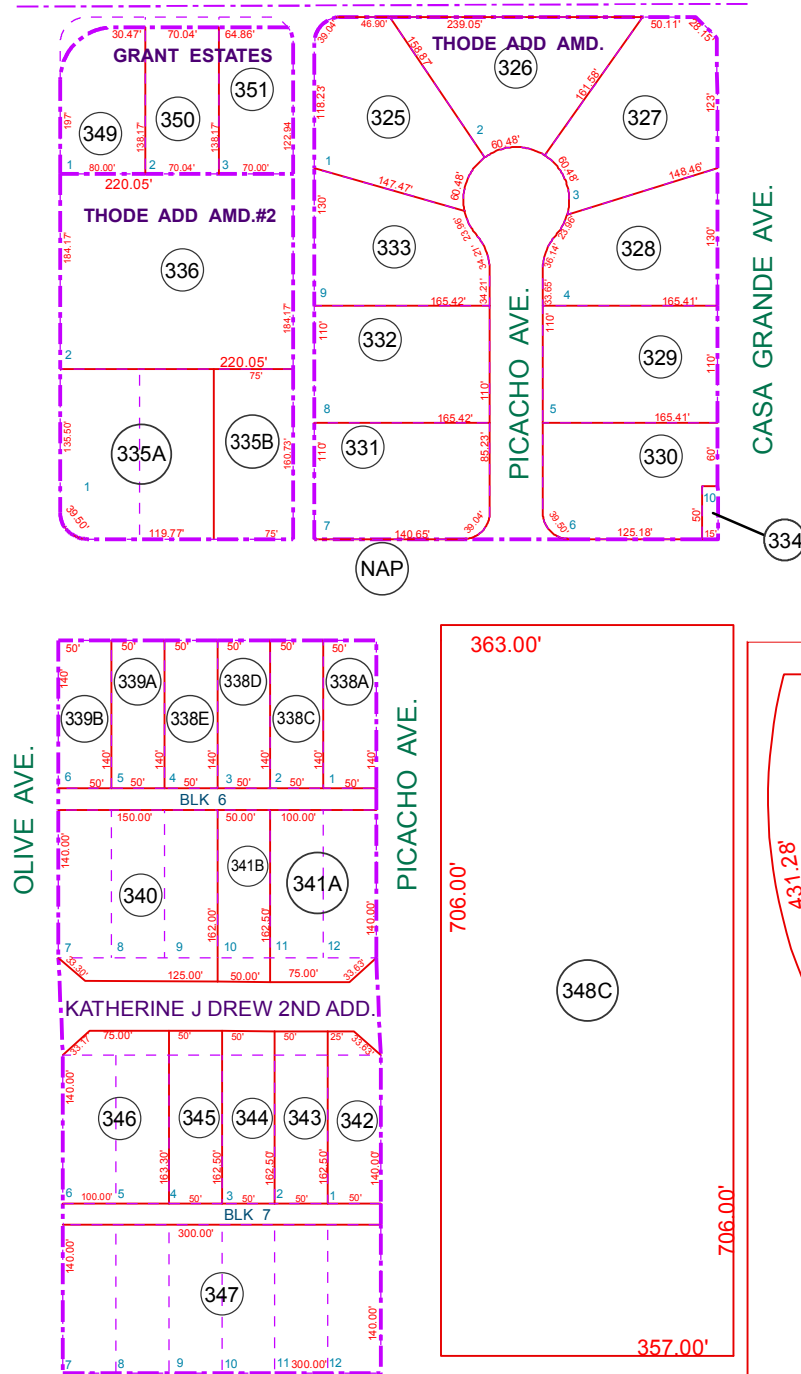


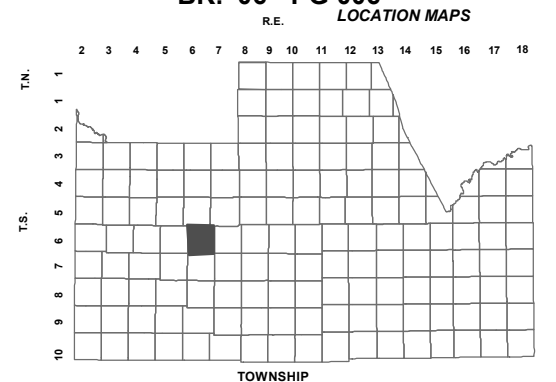
SEE MAP 506-07\_2



SEE MAP 506-06

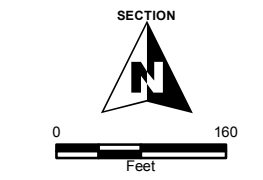


**506-07\_1**  
 SW SEC. 20 T.06S. R.06E.  
 THODE ADD AMD. THODE ADD #2  
 BK. 07 - PG 042 BK. 07 - PG 028  
 KATHERINE J. DREW 2 AMD.  
 BK. 05 - PG 001  
 1ST ADD TO C. G. GRANT ESTATES  
 BK. 01 - PG. 013, 014 CAB D - SLD 150  
 1ST ADD TO C. G. RE-SUB.  
 BLKS. 19 & 20  
 BK. 06 - PG 006



SEE MAP 506-08

6	5	4	3	2	1
7	8	9	10	11	12
18	17	16	15	14	13
19	20	21	22	23	24
30	29	28	27	26	25
31	32	33	34	35	36



Revised: 1/8/2014

By: **TH**



PINAL COUNTY  
*wide open opportunity*

**Pinal County Assessor**

THIS MAP DOES NOT REPRESENT A SURVEY. NO LIABILITY IS ASSUMED FOR THE ACCURACY OF THE DATA DELINEATED HEREIN, EITHER EXPRESSED OR IMPLIED BY PINAL COUNTY OR ITS EMPLOYEES. THIS MAP IS COMPILED FROM OFFICIAL RECORDS, INCLUDING PLATS, SURVEYS, RECORDED DEEDS AND CONTRACTS, AND ONLY CONTAINS INFORMATION REQUIRED FOR THE PINAL COUNTY ASSESSOR'S OFFICE PURPOSES.