

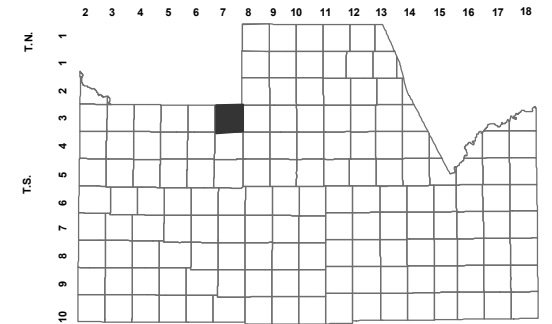
# 509-95\_4

NW SEC. 13 T.03S. R.07E.  
SAN TAN HEIGHTS PARCELS A-3  
CAB E - SLD 122

PLAT CORRECTIONS:

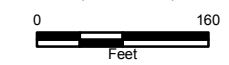
- 2005-075238
- 2005-136126
- 2005-139473

LOCATION MAPS  
R.E.



TOWNSHIP

						EMPIRE BLVD					
6	5	4	3	2	1						
SCISSMAN RD.		WILDHORSE DR.		E SWORTH AVE.		THOMPSON RD.		HULL HWY			
7	8	9	10	11	12						
		ROBERTS RD.		GAIL RD.						GARY RD.	
18	17	16	15	14	13						
		ROYCE RD.		JUDD RD.							
19	20	21	22	23	24						
30	29	28	27	26	25						
31	32	33	34	35	36						
						SECTION					



Revised: 2/22/2018

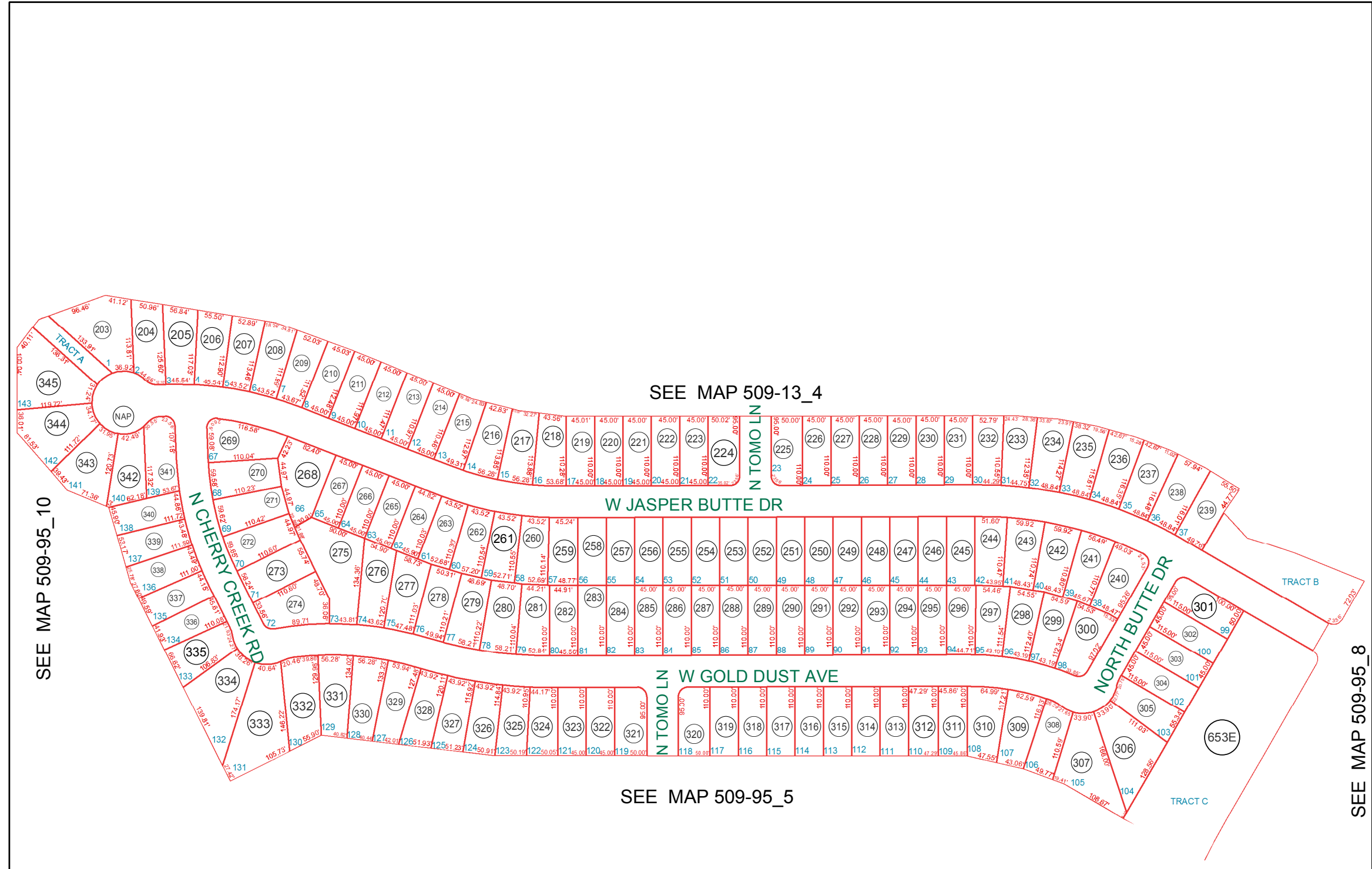
By: **MBG**



**PINAL COUNTY**  
WIDE OPEN OPPORTUNITY

**Pinal County Assessor**

THIS MAP DOES NOT REPRESENT A SURVEY. NO LIABILITY IS ASSUMED FOR THE ACCURACY OF THE DATA DELINEATED HEREIN, EITHER EXPRESSED OR IMPLIED BY PINAL COUNTY OR ITS EMPLOYEES. THIS MAP IS COMPILED FROM OFFICIAL RECORDS, INCLUDING PLATS, SURVEYS, RECORDED DEEDS AND CONTRACTS, AND ONLY CONTAINS INFORMATION REQUIRED FOR THE PINAL COUNTY ASSESSOR'S OFFICE PURPOSES.



SEE MAP 509-95\_10

SEE MAP 509-95\_8

SEE MAP 509-13\_4

SEE MAP 509-95\_5

COMMON AREA 516-01-653E INCLUDES:

- SAN TAN HEIGHTS PARCEL A-1: TRACTS A THRU C
- SAN TAN HEIGHTS PARCEL A-2: TRACTS A THRU D
- SAN TAN HEIGHTS PARCEL A-3: TRACTS A THRU C
- SAN TAN HEIGHTS PARCEL A-4: TRACTS A THRU C
- SAN TAN HEIGHTS PARCEL A-5: TRACTS A THRU C
- SAN TAN HEIGHTS PARCEL A-6: TRACTS A THRU C
- SAN TAN HEIGHTS PARCEL A-7: TRACTS A THRU C
- SAN TAN HEIGHTS PARCEL A-8: TRACTS A THRU D
- SAN TAN HEIGHTS PARCEL A-9: TRACTS A THRU C
- SAN TAN HEIGHTS PARCEL C-6: TRACTS A & B
- SAN TAN HEIGHTS PARCEL C-8: TRACTS A THRU C
- SAN TAN HEIGHTS PARCEL C-10: TRACTS A THRU C
- SAN TAN HEIGHTS PARCEL C-11: TRACTS A THRU C
- SAN TAN HEIGHTS PARCEL C-13: TRACT A

- SAN TAN HEIGHTS PARCEL C-7: TRACTS A THRU C ARE UNDER APN 516-01-653B
- SAN TAN HEIGHTS PARCEL C-9: TRACTS A THRU C ARE UNDER APN 516-01-653C
- SAN TAN HEIGHTS PARCEL C-12: TRACTS A THRU F ARE UNDER APN 516-01-653D