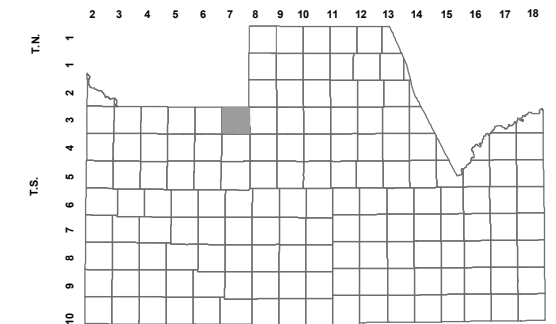


BOOK - MAP
509-95_3

SEC. 11 T.03S. R.07E.

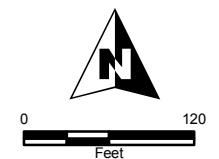
SAN TAN HEIGHTS
PARCELS A-2
CAB E - SLD 124

LOCATION MAPS
R.E.



TOWNSHIP

						EMPIRE BLVD					
6	5	4	3	2	1	SCISSMAN RD.	8	9	10	11	12
7	8	9	10	11	12	WILDHORSE DR.	17	16	15	14	13
18	17	16	15	14	13	ELSWORTH AVE.	21	22	23	24	
19	20	21	22	23	24	THOMPSON RD.	28	27	26	25	
30	29	28	27	26	25	ROBERTS RD.	34	35	36		
31	32	33	34	35	36	ROYCE RD.					
						SECTION					



Revised: 2/22/2018

By: **MBG**



PINAL COUNTY

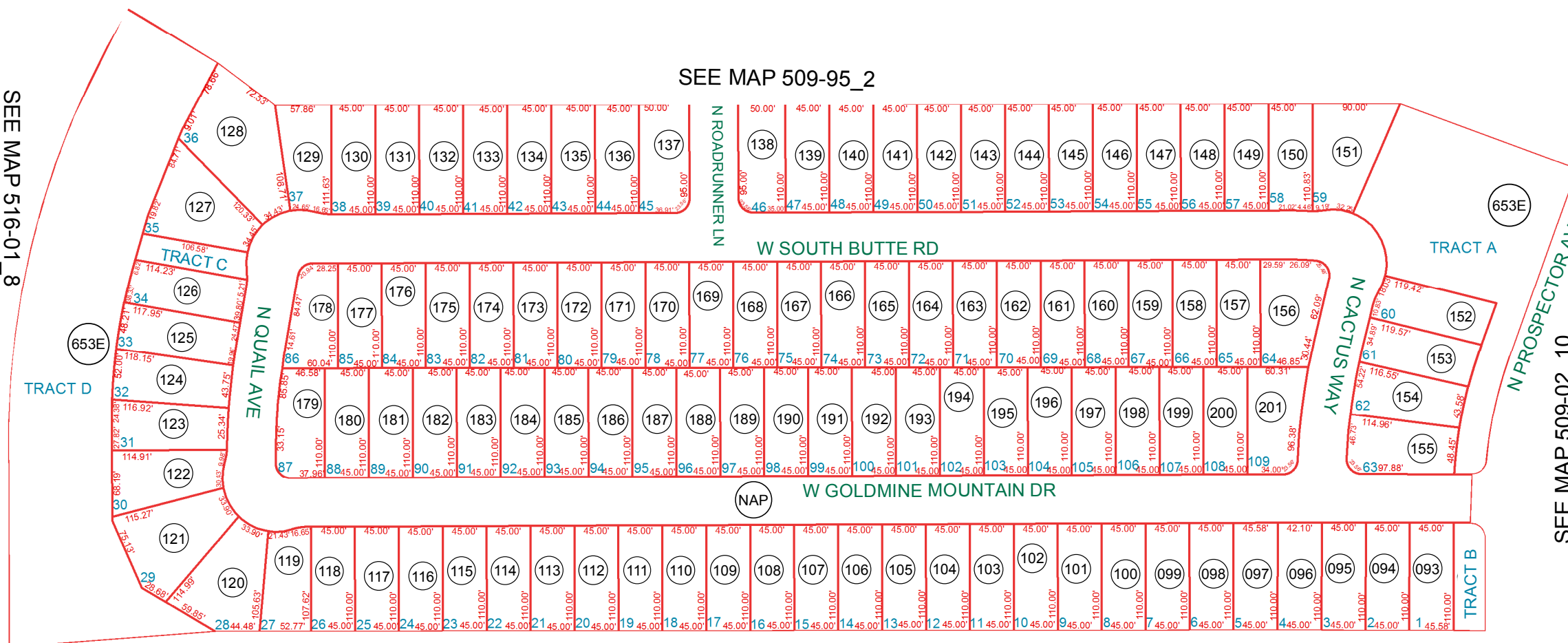
WIDE OPEN OPPORTUNITY

Pinal County Assessor

THIS MAP DOES NOT REPRESENT A SURVEY. NO LIABILITY IS ASSUMED FOR THE ACCURACY OF THE DATA DELINEATED HEREIN, EITHER EXPRESSED OR IMPLIED BY PINAL COUNTY OR ITS EMPLOYEES. THIS MAP IS COMPILED FROM OFFICIAL RECORDS, INCLUDING PLATS, SURVEYS, RECORDED DEEDS AND CONTRACTS, AND ONLY CONTAINS INFORMATION REQUIRED FOR THE PINAL COUNTY ASSESSOR'S OFFICE PURPOSES.

SEE MAP 516-01_8

SEE MAP 509-95_2



SEE MAP 509-02_10

SEE MAP 509-95_10

COMMON AREA 516-01-653E INCLUDES:

- SAN TAN HEIGHTS PARCEL A-1: TRACTS A THRU C
- SAN TAN HEIGHTS PARCEL A-2: TRACTS A THRU D
- SAN TAN HEIGHTS PARCEL A-3: TRACTS A THRU C
- SAN TAN HEIGHTS PARCEL A-4: TRACTS A THRU C
- SAN TAN HEIGHTS PARCEL A-5: TRACTS A THRU C
- SAN TAN HEIGHTS PARCEL A-6: TRACTS A THRU C
- SAN TAN HEIGHTS PARCEL A-7: TRACTS A THRU C
- SAN TAN HEIGHTS PARCEL A-8: TRACTS A THRU D
- SAN TAN HEIGHTS PARCEL A-9: TRACTS A THRU C
- SAN TAN HEIGHTS PARCEL C-6: TRACTS A & B
- SAN TAN HEIGHTS PARCEL C-8: TRACTS A THRU C
- SAN TAN HEIGHTS PARCEL C-10: TRACTS A THRU C
- SAN TAN HEIGHTS PARCEL C-11: TRACTS A THRU C
- SAN TAN HEIGHTS PARCEL C-13: TRACT A

- SAN TAN HEIGHTS PARCEL C-7: TRACTS A THRU C ARE UNDER APN 516-01-653B
- SAN TAN HEIGHTS PARCEL C-9: TRACTS A THRU C ARE UNDER APN 516-01-653C
- SAN TAN HEIGHTS PARCEL C-12: TRACTS A THRU F ARE UNDER APN 516-01-653D