

SEC. 32 PT-NE, TN.05S RG.07E

THIS MAP IS FOR TAX PURPOSES ONLY.
THIS OFFICE WILL NOT ASSUME LIABILITY FOR
REPRESENTATION, MEASUREMENTS OR ACREAGE.

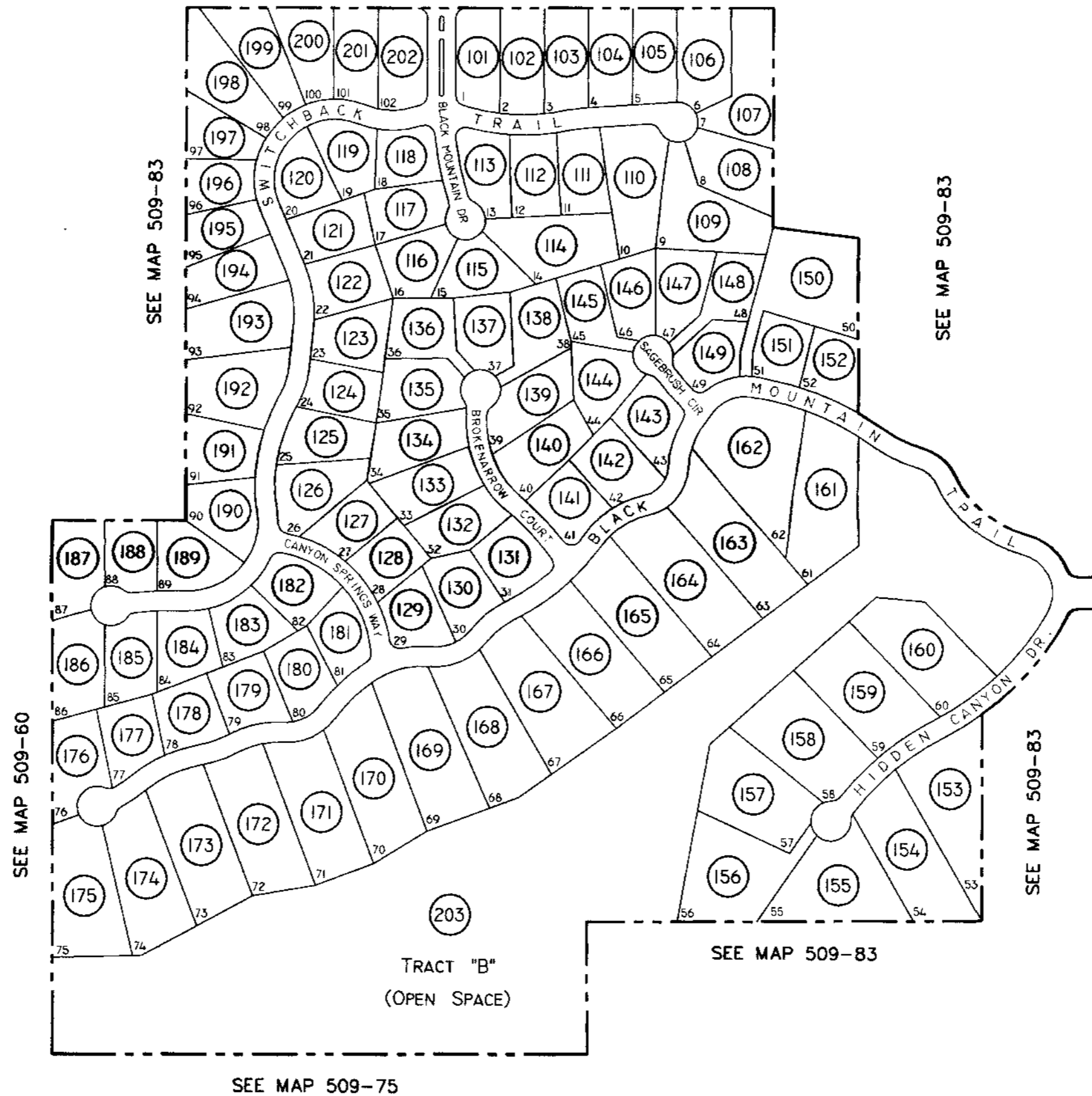
THE ORIGINAL PLAT OF THIS SUBDIVISION IS
ON FILE WITH THE PINAL COUNTY RECORDERS
OFFICE, FOR COMPLETE INFORMATION OF PLAT
AND CC&R's CALL (520) 868-7100.

SEE MAP 509-58

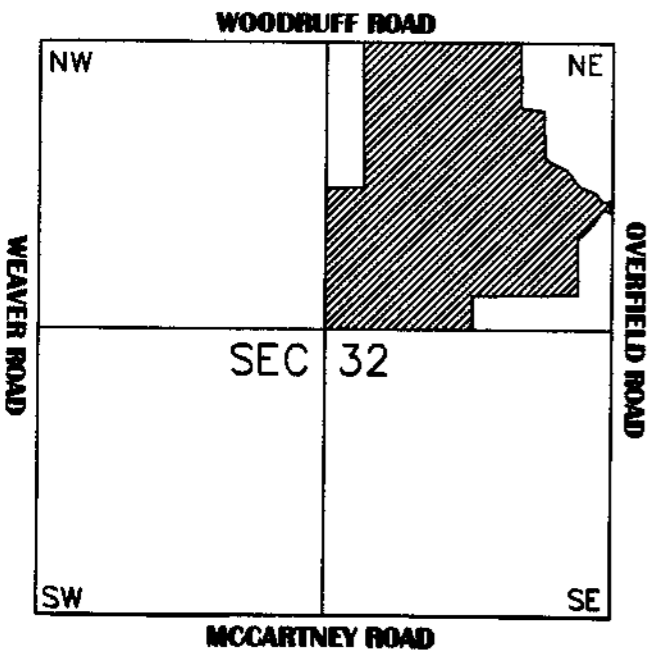
509-83 2/2

BLACK MOUNTAIN ESTATES

CAB "D" SLIDE 08



VICINITY MAP



SEE MAP 509-77



SCALE: 1" = 300'

7-18-2001