

NE1/4 OF SEC. 24 TN.05S RG.06E

509-73

DESERT HIGHLANDS SUBDIV. UNIT 1

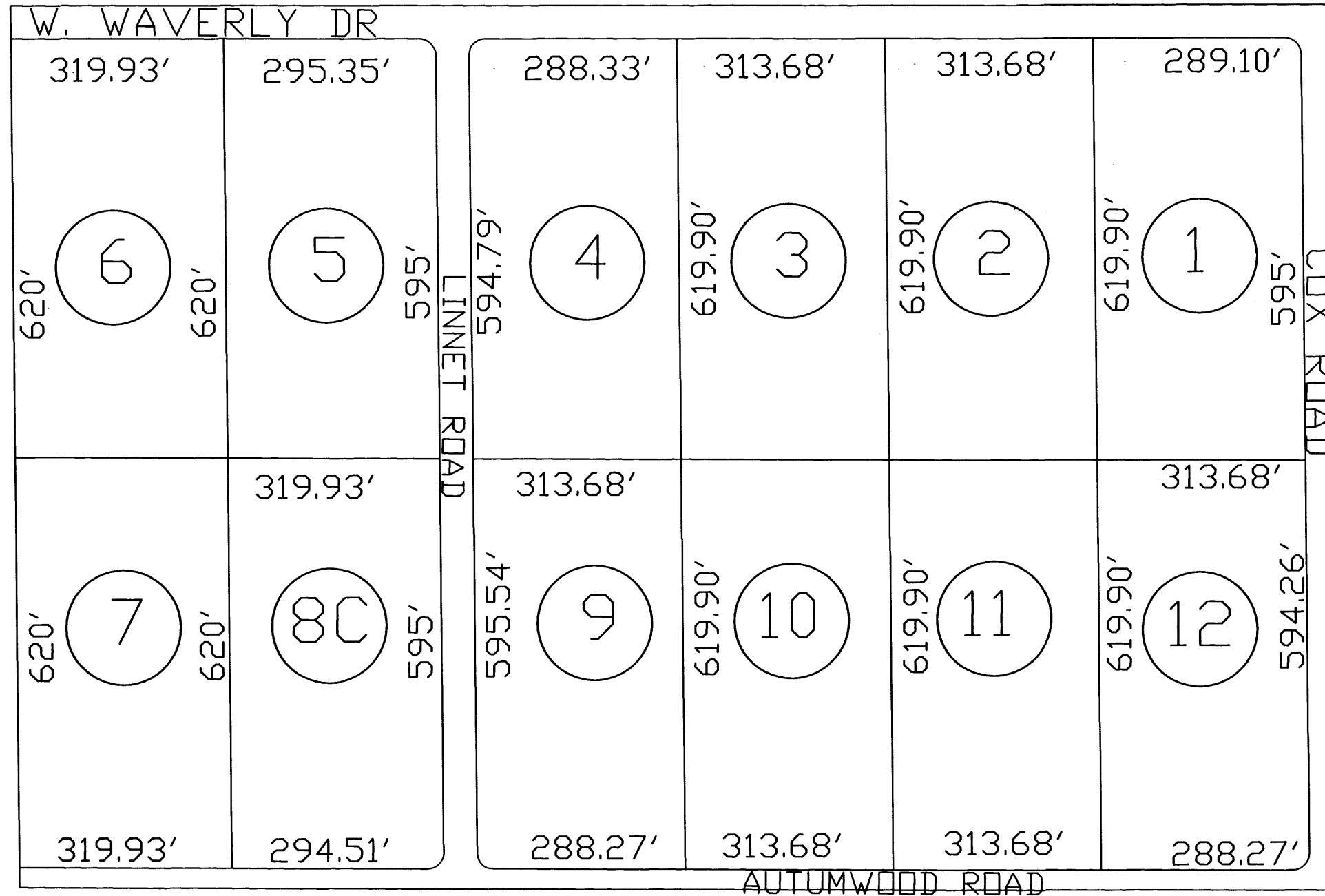
SEE MAP 509-25

THIS MAP IS FOR TAX PURPOSES ONLY.

THIS OFFICE WILL NOT ASSUME LIABILITY FOR REPRESENTATION, MEASUREMENTS OR ACREAGE.

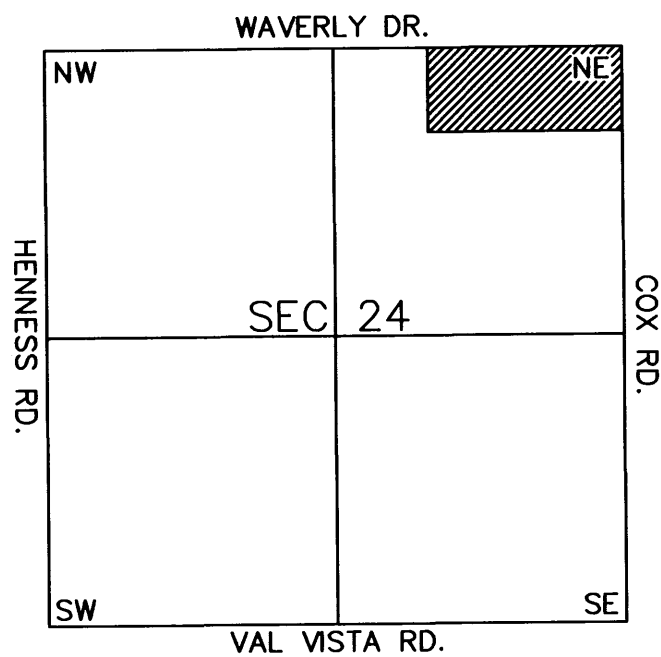
THE ORIGINAL PLAT OF THIS SUBDIVISION IS ON FILE WITH THE PINAL COUNTY RECORDERS OFFICE, FOR COMPLETE INFORMATION OF PLAT AND CC&R's CALL (520) 868-7100.

SEE MAP 509-40



SEE MAP 509-50

VICINITY MAP



SEE MAP 509-40



SCALE: 1" = 200'

05-09-2003