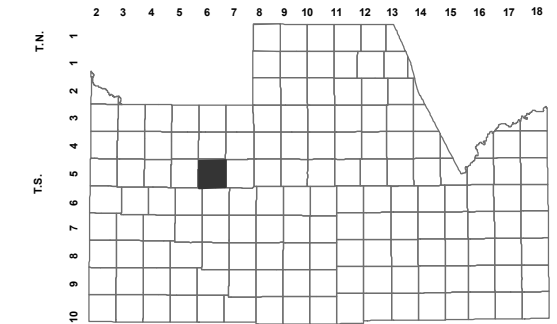


509-66

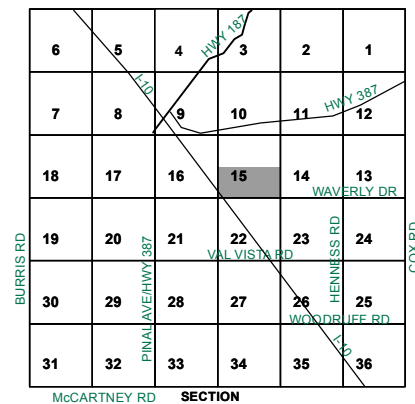
S 1/2 SEC. 15 T.05S. R.06E.

TAMARACK VILLAGE
BOOK 16 - PAGE 023

LOCATION MAPS
R.E.



TOWNSHIP



Revised: 12/11/2017

By: **TH**



PINAL COUNTY
WIDE OPEN OPPORTUNITY

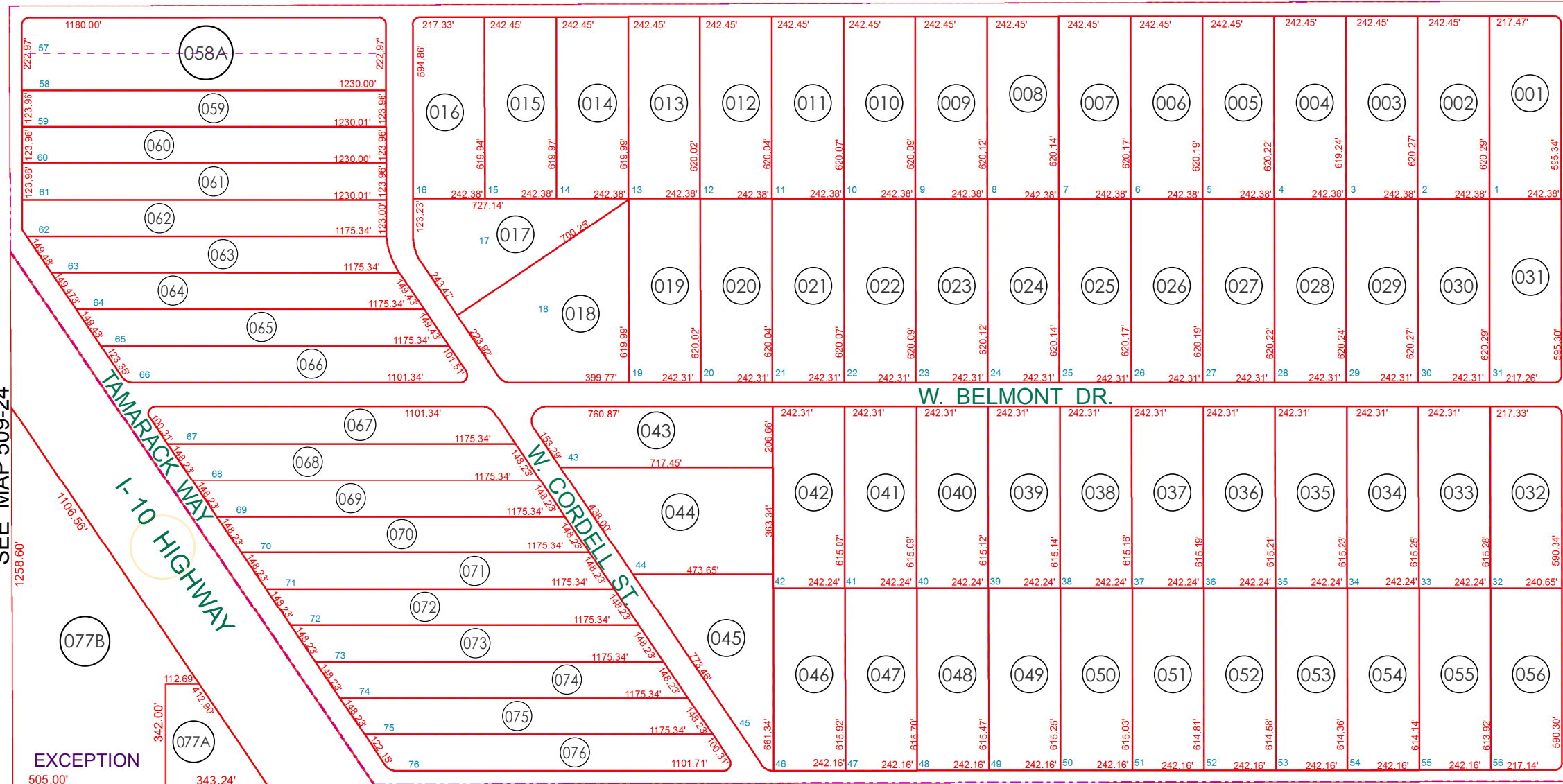
Pinal County Assessor

THIS MAP DOES NOT REPRESENT A SURVEY. NO LIABILITY IS ASSUMED FOR THE ACCURACY OF THE DATA DELINEATED HEREIN, EITHER EXPRESSED OR IMPLIED BY PINAL COUNTY OR ITS EMPLOYEES. THIS MAP IS COMPILED FROM OFFICIAL RECORDS, INCLUDING PLATS, SURVEYS, RECORDED DEEDS AND CONTRACTS, AND ONLY CONTAINS INFORMATION REQUIRED FOR THE PINAL COUNTY ASSESSOR'S OFFICE PURPOSES.

W. CAMDON DR.

SEE MAP 509-24

W. CAMDON DR.



W. WAVERLY DR.

SEE MAP 509-39_2

W. WAVERLY DR.

SEE MAP 509-39_1

SEE MAP 509-24

SEE MAP 509-24