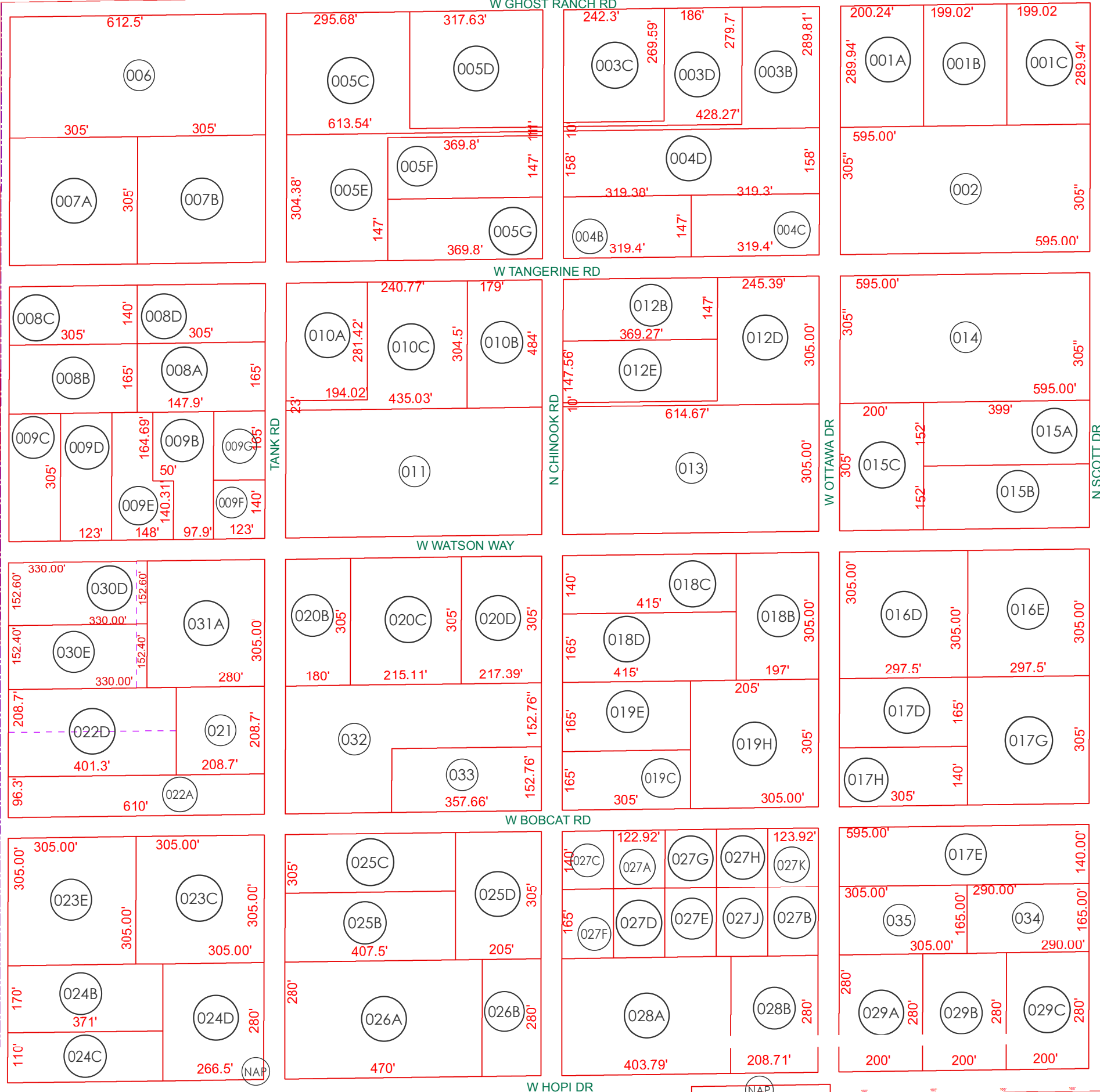


SEE MAP 509-24

W GHOST RANCH RD



SEE MAP 509-34

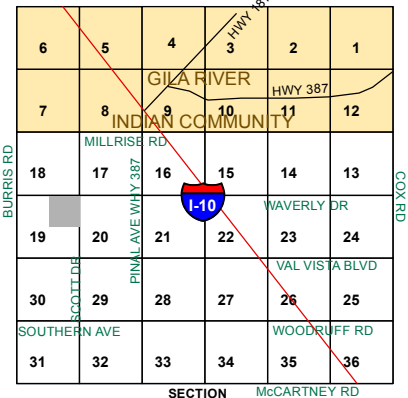
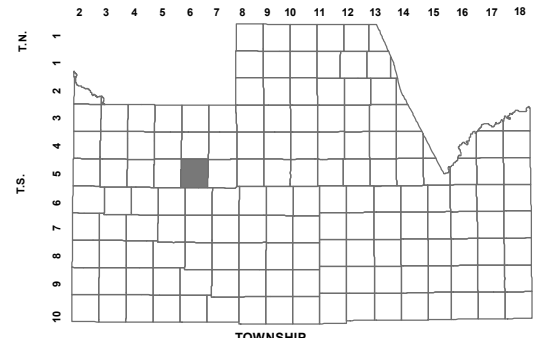
SEE MAP 509-35

BOOK - MAP

509-28

NE SEC. 19 T.05S. R.06E.

LOCATION MAPS
R.E.



Revised: 03/02/2016

By: **TH**



PINAL COUNTY
wide open opportunity

Pinal County Assessor

THIS MAP DOES NOT REPRESENT A SURVEY. NO LIABILITY IS ASSUMED FOR THE ACCURACY OF THE DATA DELINEATED HEREIN, EITHER EXPRESSED OR IMPLIED BY PINAL COUNTY OR ITS EMPLOYEES. THIS MAP IS COMPILED FROM OFFICIAL RECORDS, INCLUDING PLATS, SURVEYS, RECORDED DEEDS AND CONTRACTS, AND ONLY CONTAINS INFORMATION REQUIRED FOR THE PINAL COUNTY ASSESSOR'S OFFICE PURPOSES.