

**SEC. 18 & 19, TN.5S RG.3E**  
**SEC. 13 & 24, TN.5S RG.2E**

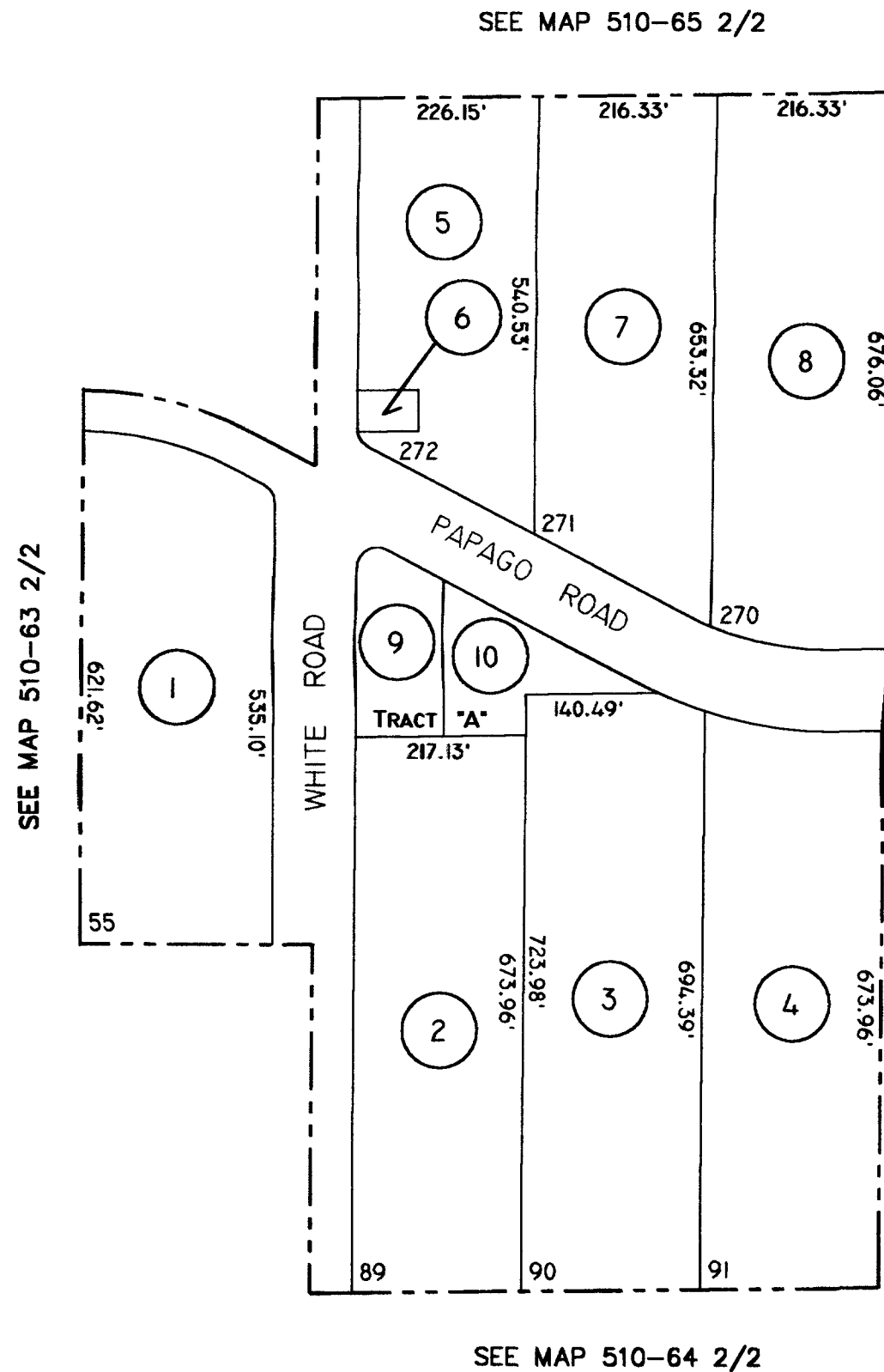
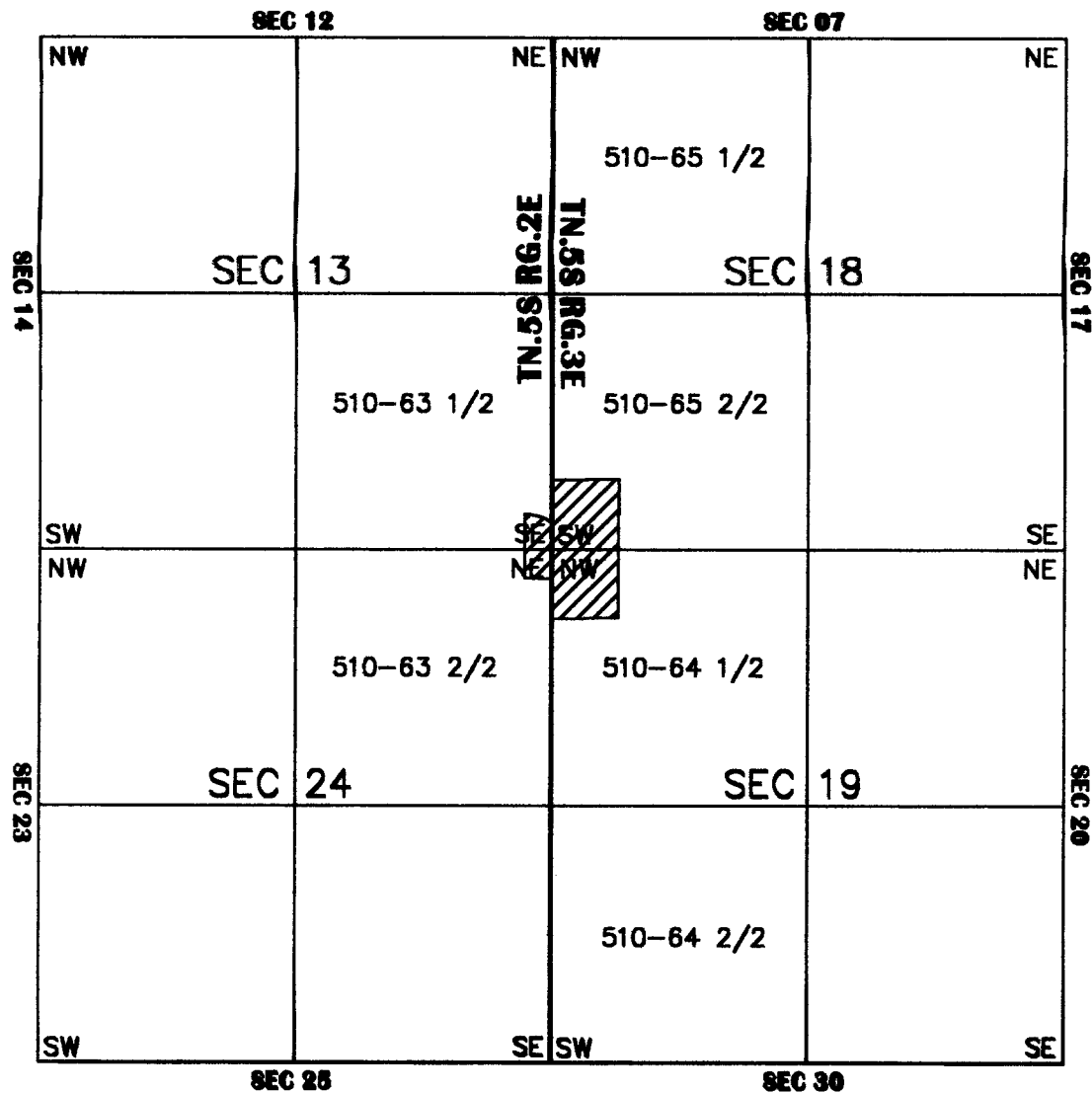
THIS MAP IS FOR TAX PURPOSES ONLY.  
 THIS OFFICE WILL NOT ASSUME LIABILITY FOR  
 REPRESENTATION, MEASUREMENTS OR ACREAGE.

THE ORIGINAL PLAT OF THIS SUBDIVISION IS  
 ON FILE WITH THE PINAL COUNTY RECORDERS  
 OFFICE, FOR COMPLETE INFORMATION OF PLAT  
 AND CC&R's CALL (520) 868-7100.

**510-82**

**PAPAGO BUTTE  
 RANCHOS REPLAT  
 BK.18 - PG.47**

**VICINITY MAP**



SEE MAP 510-65 2/2

SEE MAP 510-64 1/2



SCALE: 1" = 200'

2-05-2002