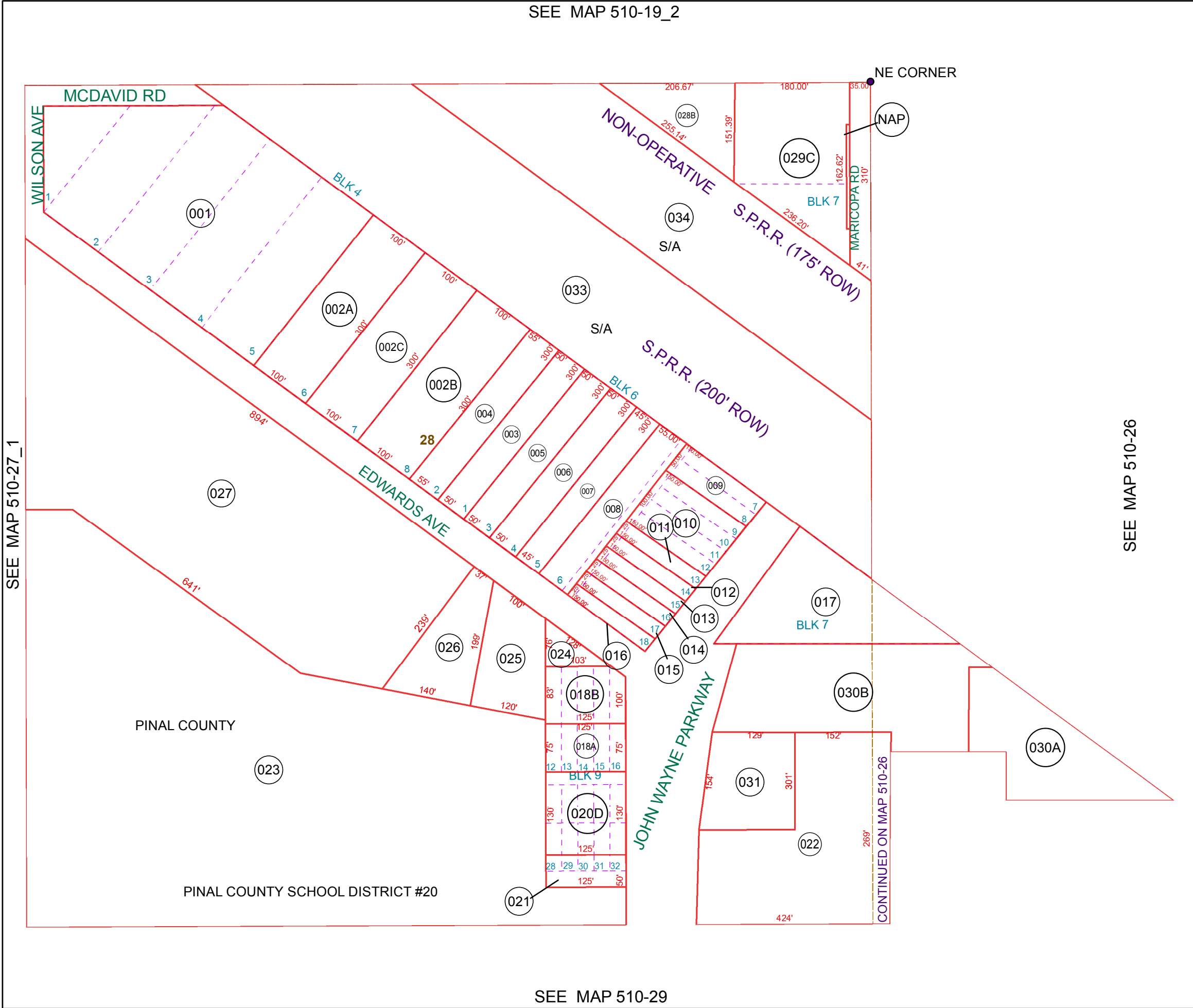


SEE MAP 510-19_2



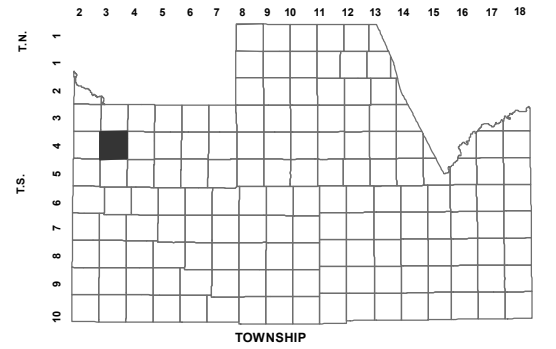
SEE MAP 510-26

SEE MAP 510-29

BOOK - MAP

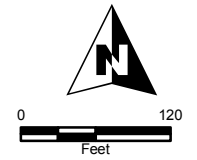
510-28

NE NE SEC. 28 T.04S. R.03E.
MARICOPA: BK 3 OF MAPS PG 006
CENTRAL PORTION OF THE
TOWNSITE OF MARICOPA:
BK 3 OF MAPS PG 007
REPLAT OF BLOCKS 4, 5 & 6 OF THE CENTRAL
PORTION OF THE TOWNSITE
OF MARICOPA: BK 3 OF MAPS PG 010
 LOCATION MAPS
 R.E.



6	5	4	3	2	1
7	8	9	10	11	12
18	17	16	15	14	13
19	20	21	22	23	24
30	29	28	27	26	25
31	32	33	34	35	36

SECTION



Revised: 10/3/2017

By: **MBG**



PINAL COUNTY

WIDE OPEN OPPORTUNITY

Pinal County Assessor

THIS MAP DOES NOT REPRESENT A SURVEY. NO LIABILITY IS ASSUMED FOR THE ACCURACY OF THE DATA DELINEATED HEREIN, EITHER EXPRESSED OR IMPLIED BY PINAL COUNTY OR ITS EMPLOYEES. THIS MAP IS COMPILED FROM OFFICIAL RECORDS, INCLUDING PLATS, SURVEYS, RECORDED DEEDS AND CONTRACTS, AND ONLY CONTAINS INFORMATION REQUIRED FOR THE PINAL COUNTY ASSESSOR'S OFFICE PURPOSES.