

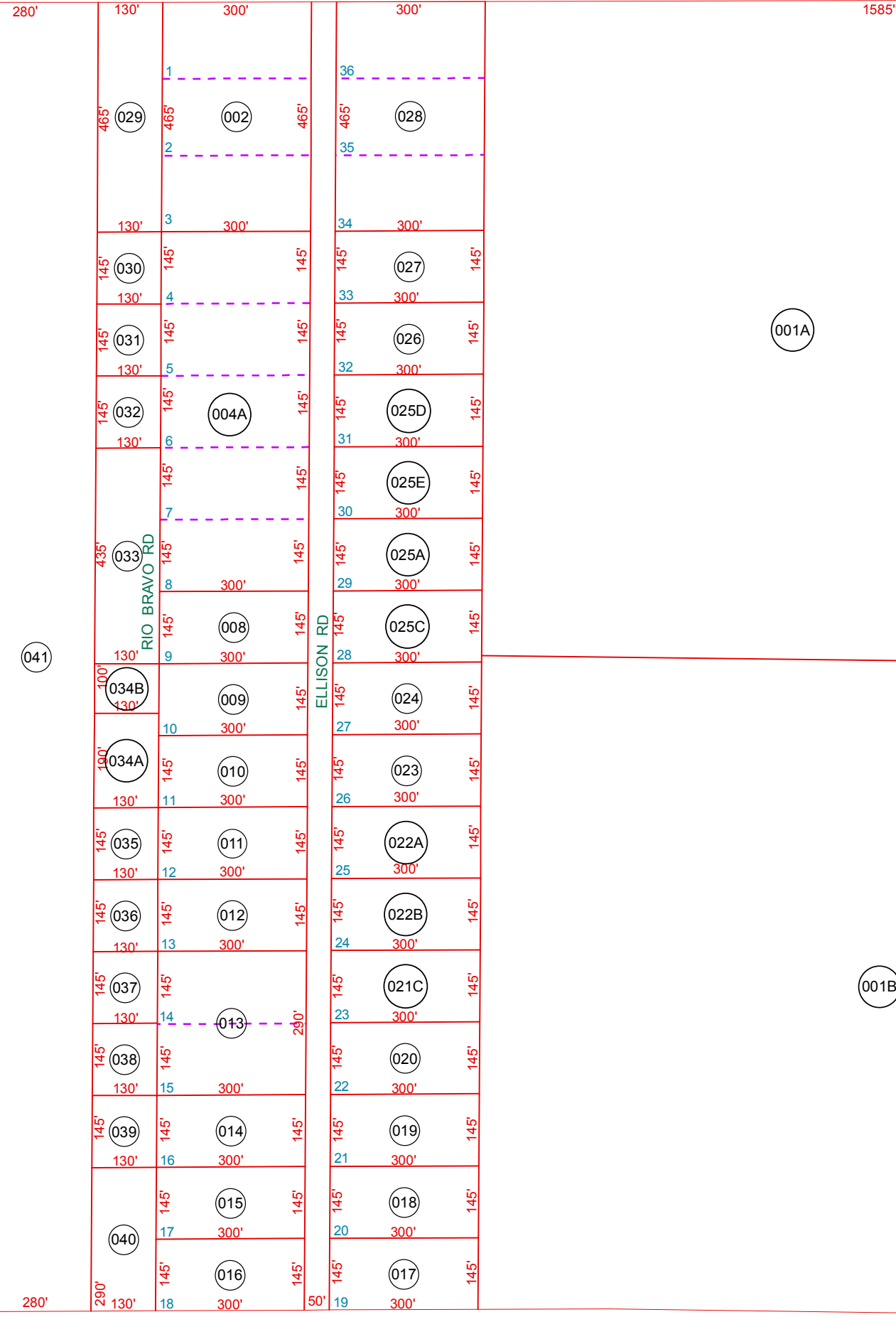
SEE MAP 510-04_1

NW COR

N¼ COR

W¼ COR

CTR¼ COR



SEE MAP 510-04_1

SEE MAP 510-05

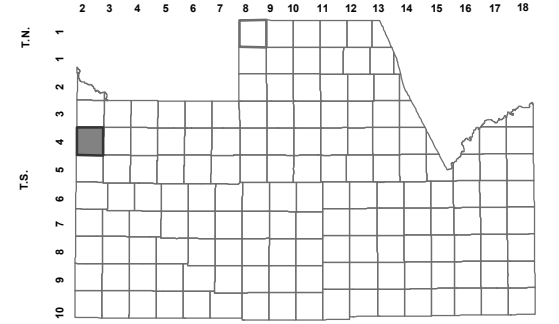
SEE MAP 510-05

BOOK - MAP

510-06

NW SEC. 15 T.04S. R.02E.
R.D. ELLISON'S
UNRECORDED SUBDIVISION

LOCATION MAPS
R.E.



| | | | | | |
|-----------------|----|----|----|----|----|
| MARICOPA COUNTY | | | | | |
| 6 | 5 | 4 | 3 | 2 | 1 |
| 7 | 8 | 9 | 10 | 11 | 12 |
| 18 | 17 | 16 | 15 | 14 | 13 |
| 19 | 20 | 21 | 22 | 23 | 24 |
| 30 | 29 | 28 | 27 | 26 | 25 |
| 31 | 32 | 33 | 34 | 35 | 36 |
| SECTION | | | | | |

Additional labels on the table: FARRELL RD (bottom), BLACK MTN RD (left), MOBILE RD (between sections 16 and 15), SAGE ST (between sections 20 and 21), SMITH ENKE RD (between sections 22 and 23), McDAVID RD (between sections 23 and 24), BOWLIN RD (between sections 29 and 30), HIDDEN VALLEY RD (between sections 34 and 35), WARREN RD (between sections 35 and 36), RALSTON RD (between sections 35 and 36).



Revised: 6/19/2015

By: YL



PINAL COUNTY
wide open opportunity

Pinal County Assessor

THIS MAP DOES NOT REPRESENT A SURVEY. NO LIABILITY IS ASSUMED FOR THE ACCURACY OF THE DATA DELINEATED HEREIN, EITHER EXPRESSED OR IMPLIED BY PINAL COUNTY OR ITS EMPLOYEES. THIS MAP IS COMPILED FROM OFFICIAL RECORDS, INCLUDING PLATS, SURVEYS, RECORDED DEEDS AND CONTRACTS, AND ONLY CONTAINS INFORMATION REQUIRED FOR THE PINAL COUNTY ASSESSOR'S OFFICE PURPOSES.