

# SEC. 3 PT-NE, NE, TN.7S RG.6E

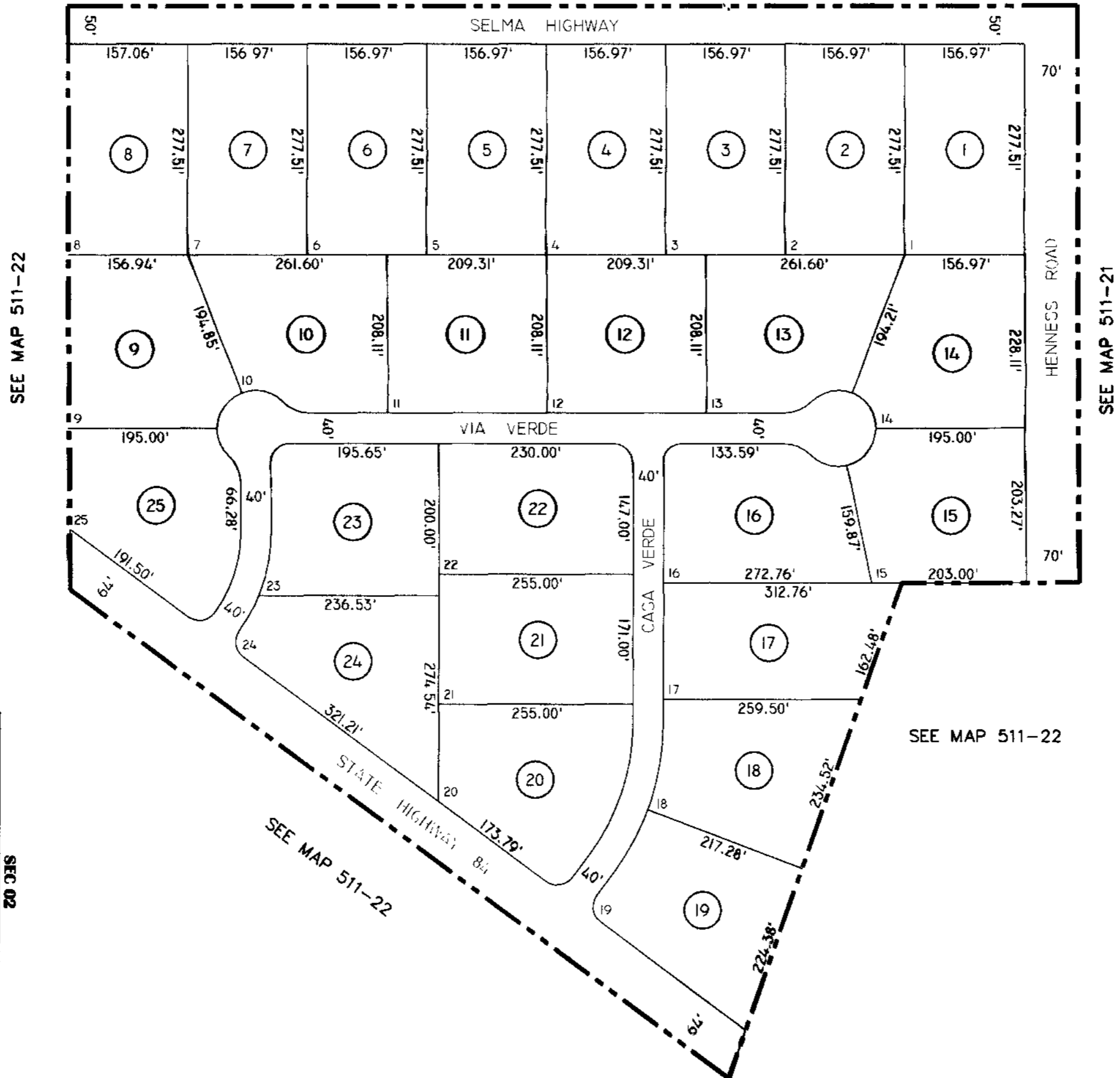
SEE BOOK 505

# 511-77

THIS MAP IS FOR TAX PURPOSES ONLY.  
THIS OFFICE WILL NOT ASSUME LIABILITY FOR  
REPRESENTATION, MEASUREMENTS OR ACREAGE.

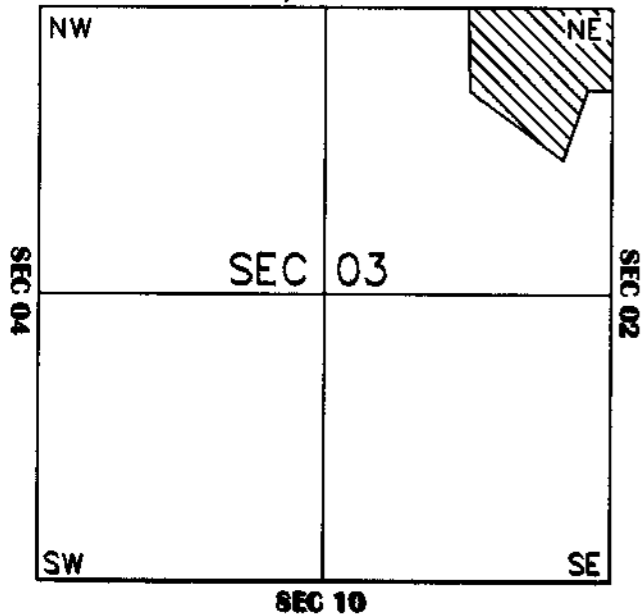
THE ORIGINAL PLAT OF THIS SUBDIVISION IS  
ON FILE WITH THE PINAL COUNTY RECORDERS  
OFFICE, FOR COMPLETE INFORMATION OF PLAT  
AND CC&R'S CALL (520) 868-7100.

## VILLA VERDE SUBDIVISION CAB."A" - SLD.82



### VICINITY MAP

SEC 34, TN.6S RG.6E



SEE MAP 511-22

SCALE: 1" = 150'

5-3-2001

PINAL COUNTY ASSESSORS MAP