

SEC. 14 SE, TN.7S RG.5E

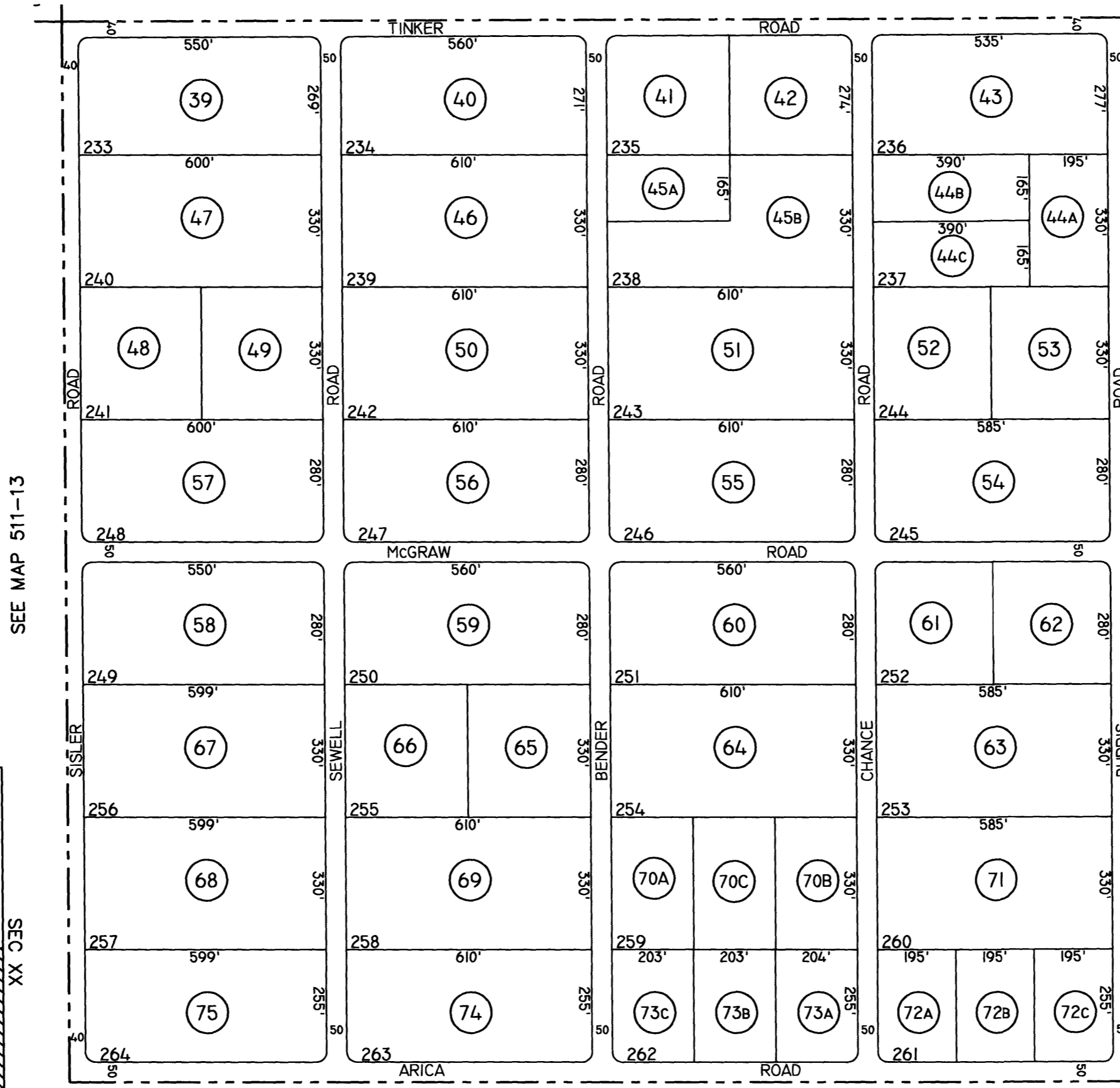
SEE MAP 511-13

511-14  
2/2

THIS MAP IS FOR TAX PURPOSES ONLY.  
THIS OFFICE WILL NOT ASSUME LIABILITY FOR  
REPRESENTATION, MEASUREMENTS OR ACREAGE.

THE ORIGINAL PLAT OF THIS SUBDIVISION IS  
ON FILE WITH THE PINAL COUNTY RECORDERS  
OFFICE, FOR COMPLETE INFORMATION OF PLAT  
AND CC&R's CALL (520) 868-7100.

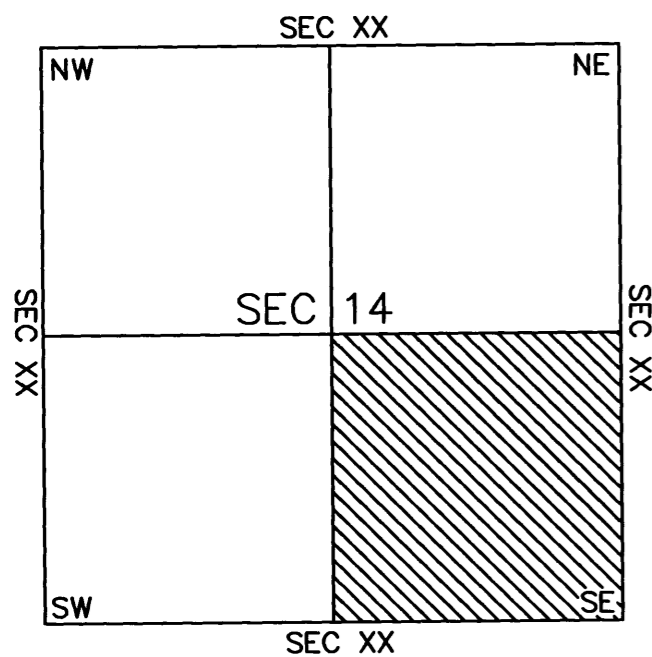
BASEBALL PARK ESTATES  
UNIT 2  
BK.10 - PG.10



SEE MAP 511-13

SEE MAP 511-01 1/3

VICINITY MAP



SCALE: 1" = 300'

5-6-2003

SEE MAP 511-01 1/3

PINAL COUNTY ASSESSORS MAP