

SEC. 2 S/2, SW, TN.7S RG.5E

THIS MAP IS FOR TAX PURPOSES ONLY.
THIS OFFICE WILL NOT ASSUME LIABILITY FOR
REPRESENTATION, MEASUREMENTS OR ACREAGE.

THE ORIGINAL PLAT OF THIS SUBDIVISION IS
ON FILE WITH THE PINAL COUNTY RECORDERS
OFFICE, FOR COMPLETE INFORMATION OF PLAT
AND CC&R'S CALL (520) 868-7100.

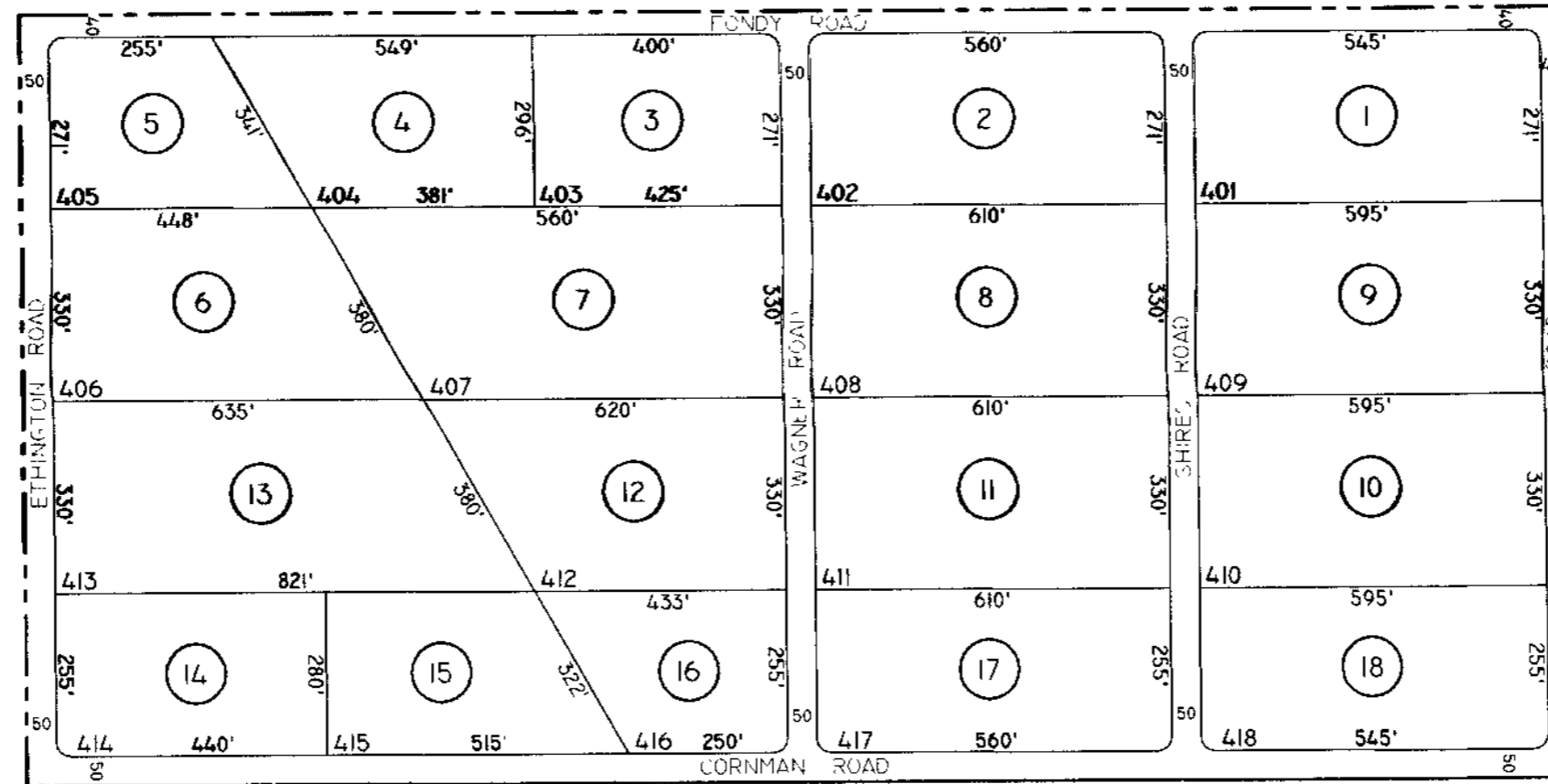
511-04

BASEBALL PARK ESTATES

UNIT 4

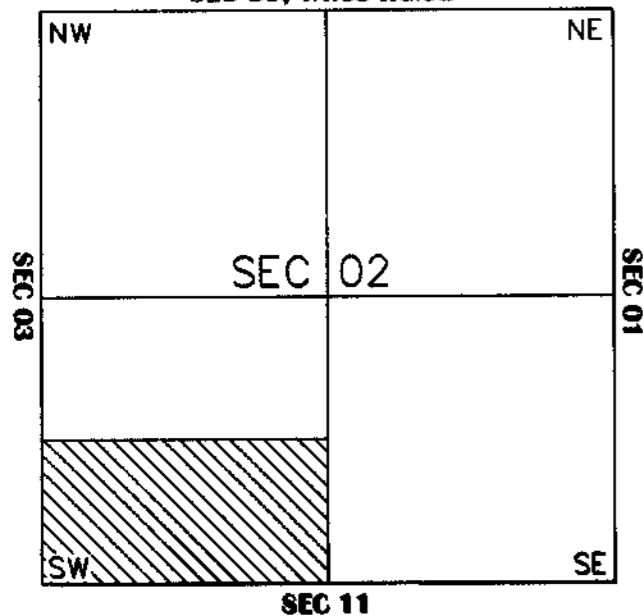
BK.10 - PG.14

SEE MAP 511-03



VICINITY MAP

SEC 35, TN.6S RG.5E



SEE MAP 511-03



SCALE: 1" = 300'

5-7-2001

PINAL COUNTY ASSESSORS MAP