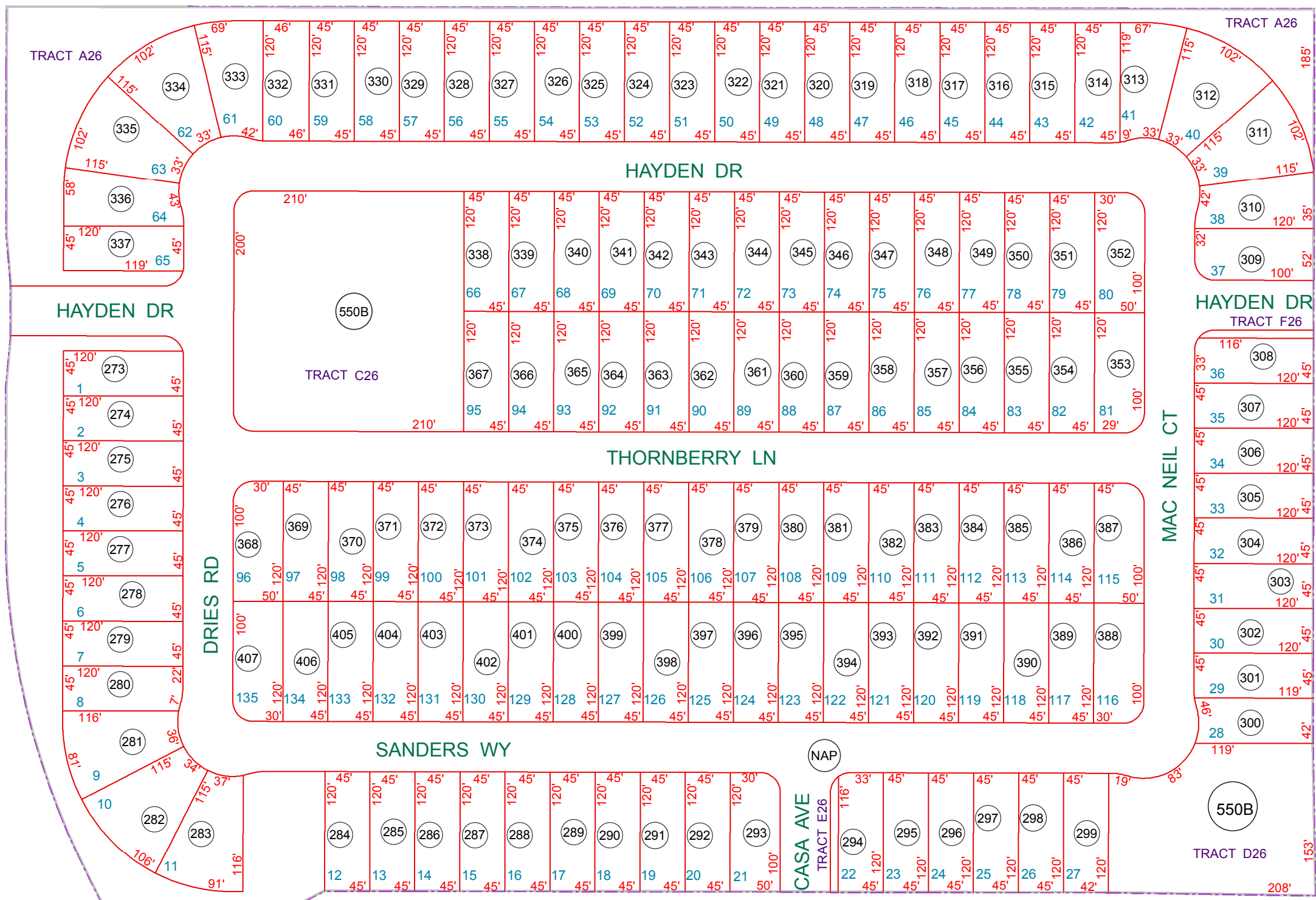


SEE MAP 510-12_3
SMITH - ENKE RD

SEE MAP 512-43_1

SEE MAP 512-49_4



SEE MAP 512-49_2

COMMON AREA 512-49-550B INCLUDES:

- PARCEL 23 @ HOMESTEAD NORTH TRACTS A23 THRU I23
- PARCEL 24 @ HOMESTEAD NORTH TRACTS A24 THRU F24
- PARCEL 25 @ HOMESTEAD NORTH TRACTS A25 THRU H25
- PARCEL 26 @ HOMESTEAD NORTH TRACTS A26 THRU F26
- PARCEL 27 @ HOMESTEAD NORTH TRACTS A27 THRU E27

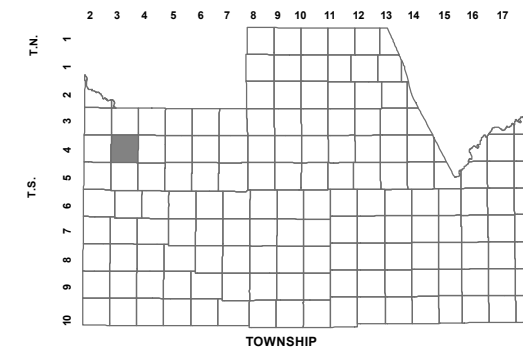
BOOK - MAP

512-49_3

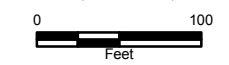
SEC. 24 T.04S. R.03E.

PARCEL 26 AT
HOMESTEAD NORTH
CAB G - SLD 133

LOCATION MAPS
R.E.



6	5	4	3	2	1
7	8	9	10	11	12
17	16	15	14	13	12
19	20	21	22	23	24
30	29	28	27	26	25
31	32	33	34	35	36



Revised: 10/5/2015

By: CM



PINAL COUNTY
wide open opportunity

Pinal County Assessor

THIS MAP DOES NOT REPRESENT A SURVEY. NO LIABILITY IS ASSUMED FOR THE ACCURACY OF THE DATA DELINEATED HEREIN, EITHER EXPRESSED OR IMPLIED BY PINAL COUNTY OR ITS EMPLOYEES. THIS MAP IS COMPILED FROM OFFICIAL RECORDS, INCLUDING PLATS, SURVEYS, RECORDED DEEDS AND CONTRACTS, AND ONLY CONTAINS INFORMATION REQUIRED FOR THE PINAL COUNTY ASSESSOR'S OFFICE PURPOSES.