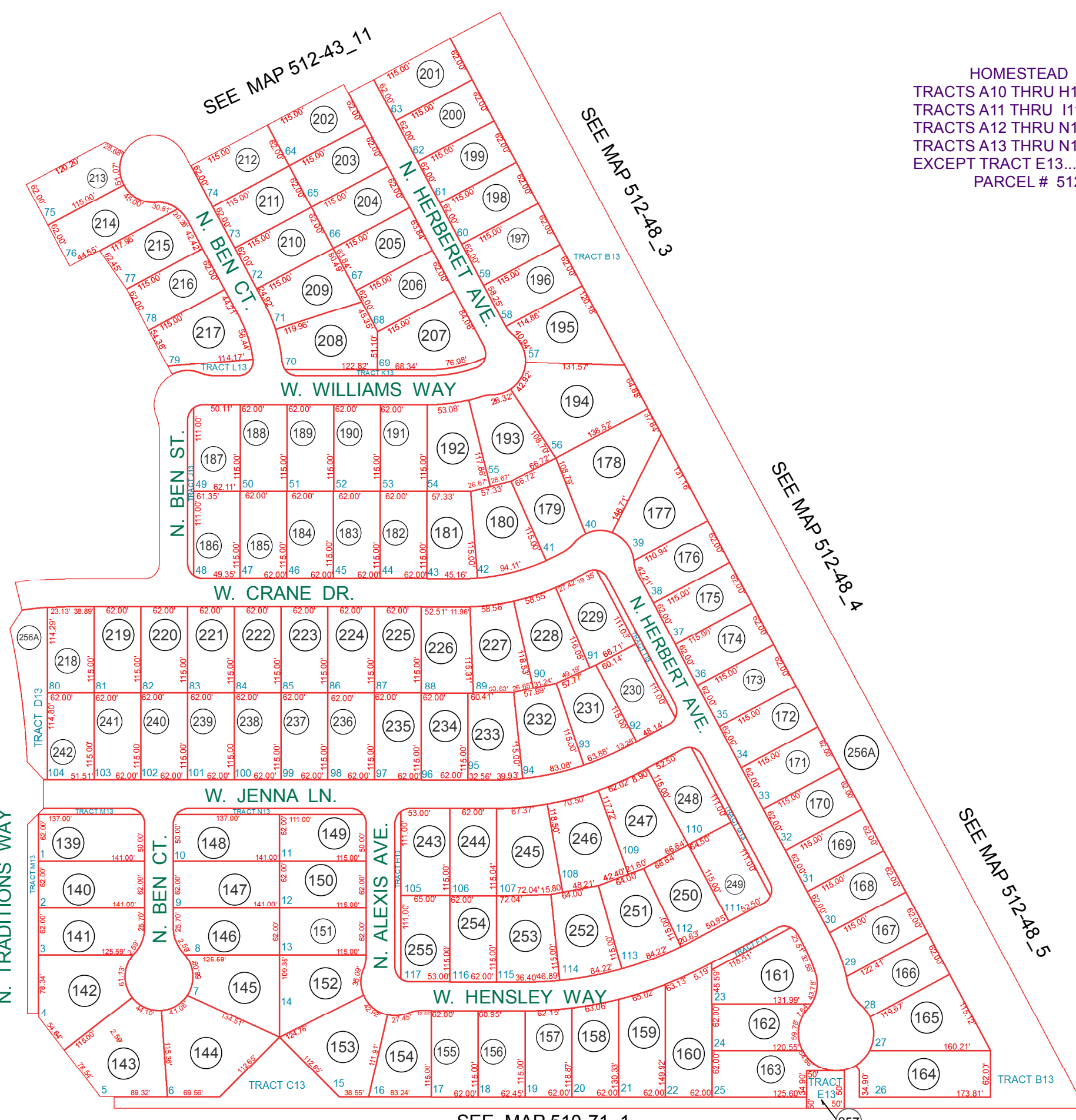


SEE MAP 512-43\_11

SEE MAP 512-48\_1



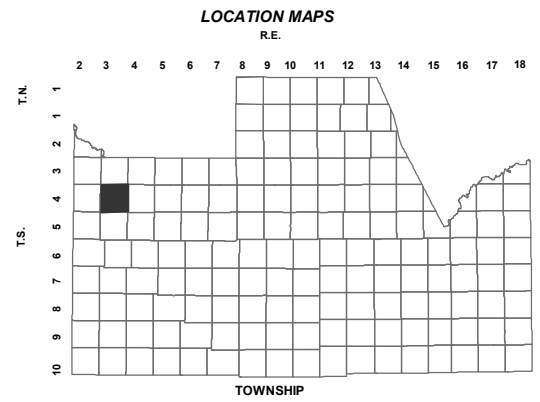
HOMESTEAD NORTH  
 TRACTS A10 THRU H10 PARCEL 10  
 TRACTS A11 THRU I11 PARCEL 11  
 TRACTS A12 THRU N12 PARCEL 12  
 TRACTS A13 THRU N13 PARCEL 13  
 EXCEPT TRACT E13.....ARE UNDER  
 PARCEL # 512-48-256A

SEE MAP 510-71\_1

257

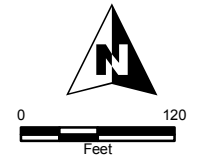
BOOK - MAP  
**512-48\_2**  
 SE SW SEC. 24 T.04S. R.03E.

**PARCEL 13 AT  
 HOMESTEAD NORTH  
 CAB. G - SLD. 123**



6	5	4	3	2	1
7	8	9	10	11	12
17	16	15	14	13	12
19	20	21	22	23	24
30	29	28	27	26	25
31	32	33	34	35	36

SECTION



Revised: 10/1/2018

By: **TH**



**PINAL COUNTY**  
 WIDE OPEN OPPORTUNITY

**Pinal County Assessor**

THIS MAP DOES NOT REPRESENT A SURVEY. NO LIABILITY IS ASSUMED FOR THE ACCURACY OF THE DATA DELINEATED HEREIN, EITHER EXPRESSED OR IMPLIED BY PINAL COUNTY OR ITS EMPLOYEES. THIS MAP IS COMPILED FROM OFFICIAL RECORDS, INCLUDING PLATS, SURVEYS, RECORDED DEEDS AND CONTRACTS, AND ONLY CONTAINS INFORMATION REQUIRED FOR THE PINAL COUNTY ASSESSOR'S OFFICE PURPOSES.