

512-43-931B:  
PCL 1 @  
HOMESTEAD NORTH:  
TRACTS A1 THRU C1

PCL 2 @  
HOMESTEAD NORTH:  
TRACTS A2 THRU F2

PCL 3 @  
HOMESTEAD NORTH:  
TRACT A3

PCL 4 @  
HOMESTEAD NORTH:  
TRACTS A4 THRU D4

PCL 5 @  
HOMESTEAD NORTH:  
TRACTS B5 THRU E5

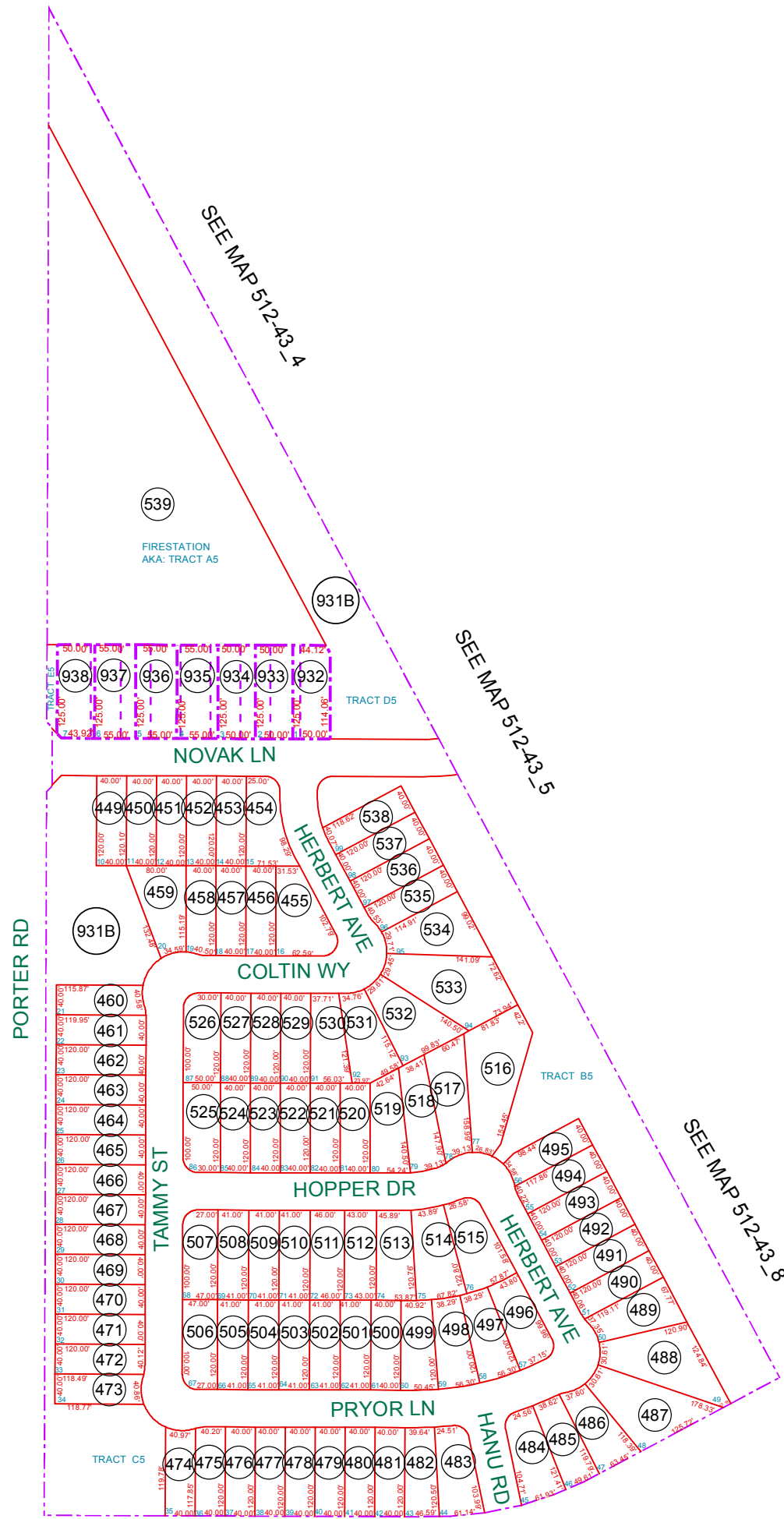
PCL 6 @  
HOMESTEAD NORTH:  
TRACTS A6 THRU C6

PCL 7 @  
HOMESTEAD NORTH:  
TRACTS A7 THRU G7

PCL 9 @  
HOMESTEAD NORTH:  
TRACTS A9 THRU D9

HOMESTEAD DRIVE,  
COMMON AREA TRACTS  
AND CHURCH SITE  
AT HOMESTEAD NORTH:  
TRACTS A, C THRU K  
AND M THRU O

SEE MAP 512-07\_1



SEE MAP 512-43\_7

BOOK - MAP

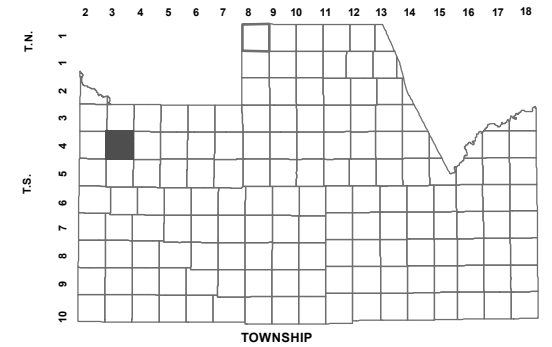
# 512-43\_6

NW SEC. 24 T.04S. R.03E.

PARCEL 5 AT HOMESTEAD NORTH:  
CAB F - SLD 138

PARCEL 5 AT HOMESTEAD NORTH AMENDED:  
REPLATS OF LOTS 1 THRU 9 2012-100005  
AFF. OF CORRECTION (STREET NAME):  
FEE 2005-169427

LOCATION MAPS  
R.E.



6	5	4	3	2	1
7	8	9	10	11	12
17	16	15	14	13	12
19	20	21	22	23	24
30	29	28	27	26	25
31	32	33	34	35	36

SECTION



Revised: 3/10/2015

By: MBG



PINAL COUNTY  
*wide open opportunity*

**Pinal County Assessor**

THIS MAP DOES NOT REPRESENT A SURVEY. NO LIABILITY IS ASSUMED FOR THE ACCURACY OF THE DATA DELINEATED HEREIN, EITHER EXPRESSED OR IMPLIED BY PINAL COUNTY OR ITS EMPLOYEES. THIS MAP IS COMPILED FROM OFFICIAL RECORDS, INCLUDING PLATS, SURVEYS, RECORDED DEEDS AND CONTRACTS, AND ONLY CONTAINS INFORMATION REQUIRED FOR THE PINAL COUNTY ASSESSOR'S OFFICE PURPOSES.