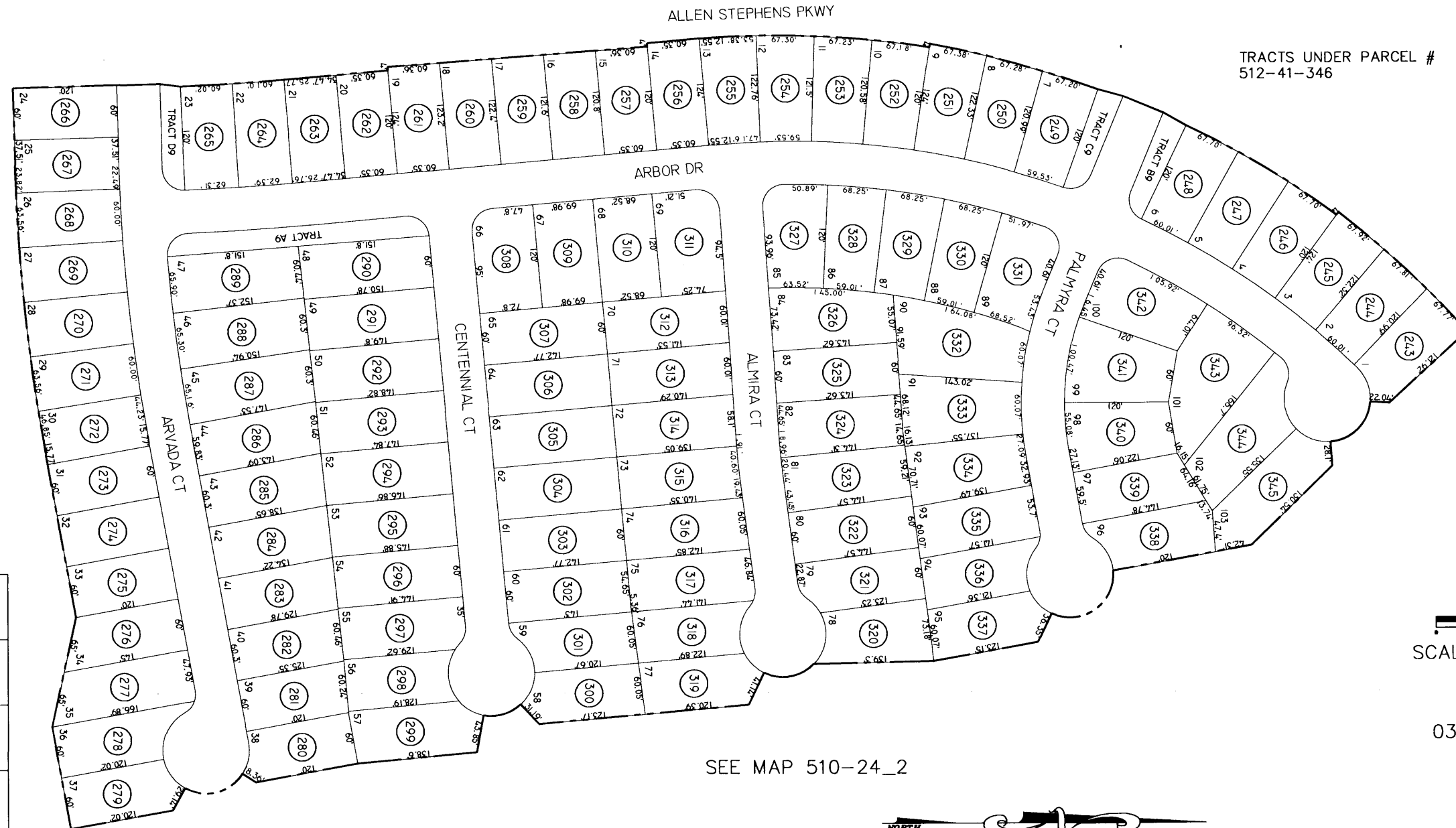


THIS MAP IS FOR TAX PURPOSES ONLY.
 THIS OFFICE WILL NOT ASSUME LIABILITY FOR
 REPRESENTATION, MEASUREMENTS OR ACREAGE.

SEE MAP 510-24_2

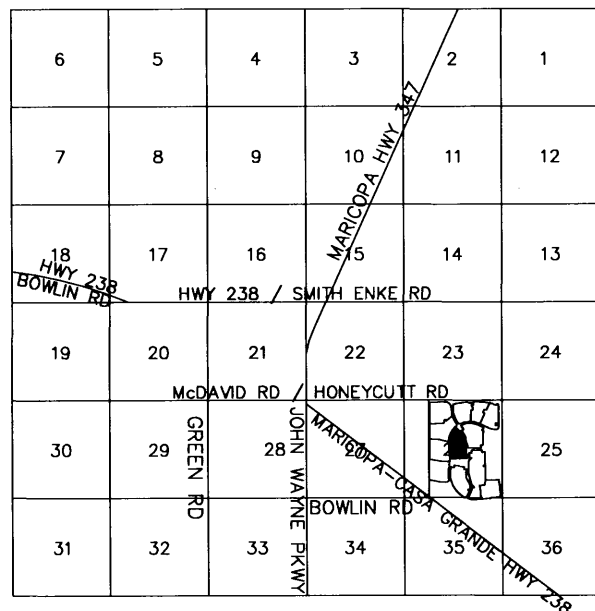
THE ORIGINAL PLAT OF THIS SUBDIVISION IS
 ON FILE WITH THE PINAL COUNTY RECORDERS
 OFFICE, FOR COMPLETE INFORMATION OF PLAT
 AND CC&R's CALL (520) 868-7100.

CANCELED PARCEL #
 510-24-001H (001A)

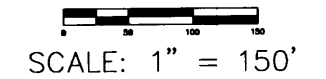


SEE MAP 510-24_2

VICINITY MAP



SEE MAP 510-24_2



03-25-2005

