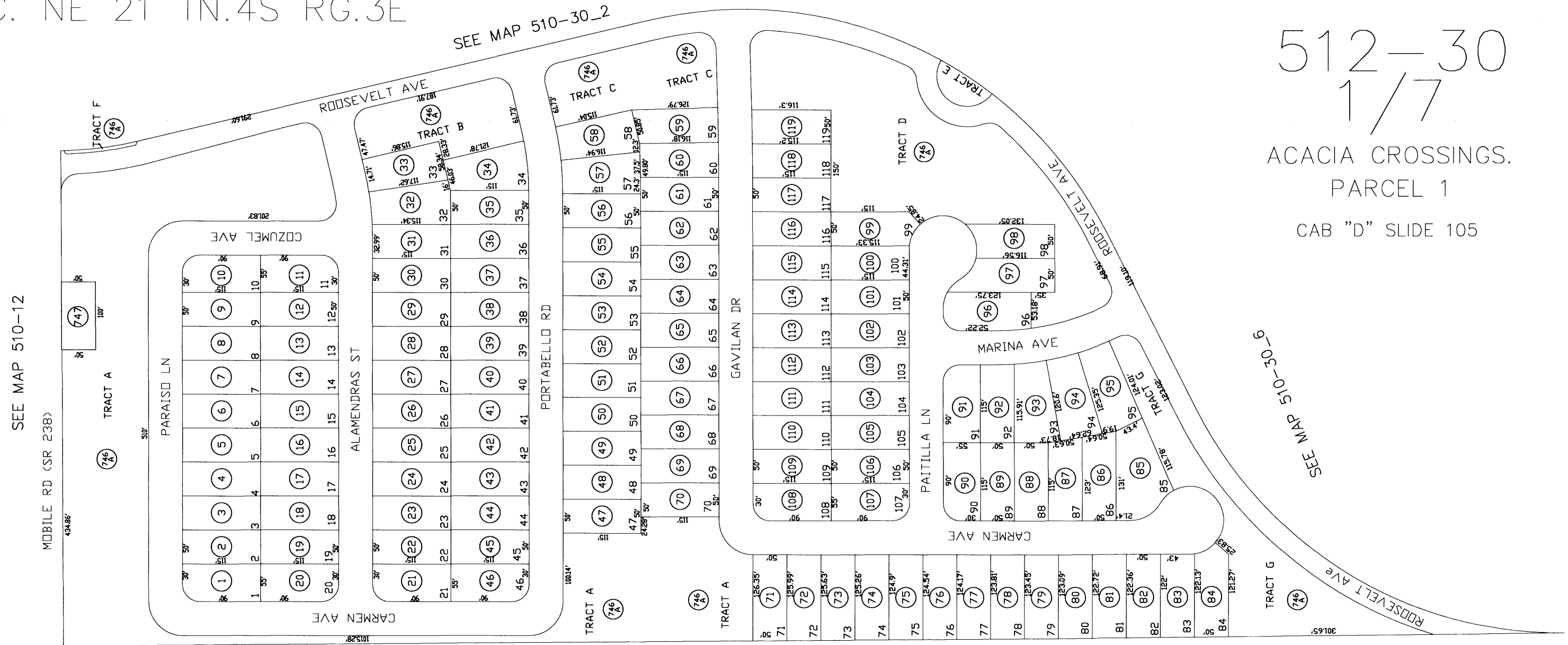


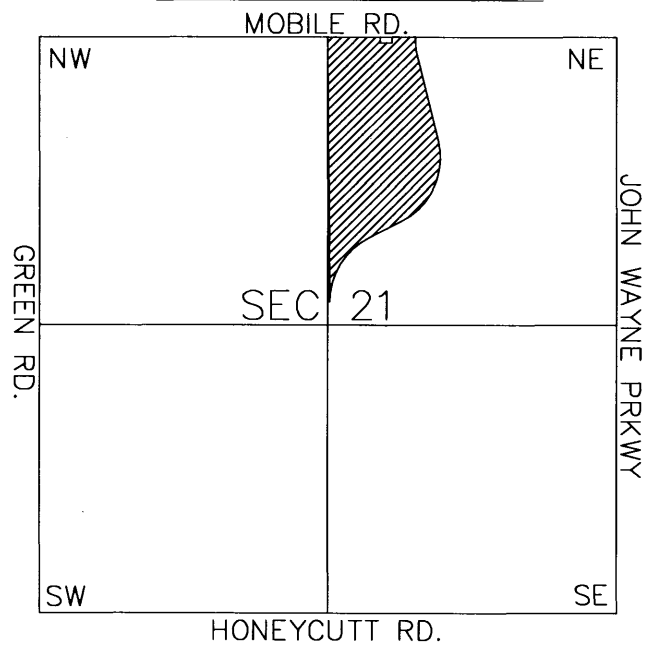
SEC. NE 21 TN.4S RG.3E

512-30  
1/7

ACACIA CROSSINGS.  
PARCEL 1  
CAB "D" SLIDE 105



VICINITY MAP



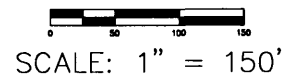
THIS MAP IS FOR TAX PURPOSES ONLY.  
THIS OFFICE WILL NOT ASSUME LIABILITY FOR REPRESENTATION, MEASUREMENTS OR ACREAGE.

THE ORIGINAL PLAT OF THIS SUBDIVISION IS ON FILE WITH THE PINAL COUNTY RECORDERS OFFICE, FOR COMPLETE INFORMATION OF PLAT AND CC&R's CALL (520) 868-7100.

PARCELS CANCELED  
510-17-001A, 002C, 510-21-011C

AREA CODE  
2019

SPECIAL DISTRICTS  
16602  
00000



SCALE: 1" = 150'

7-22-2003