

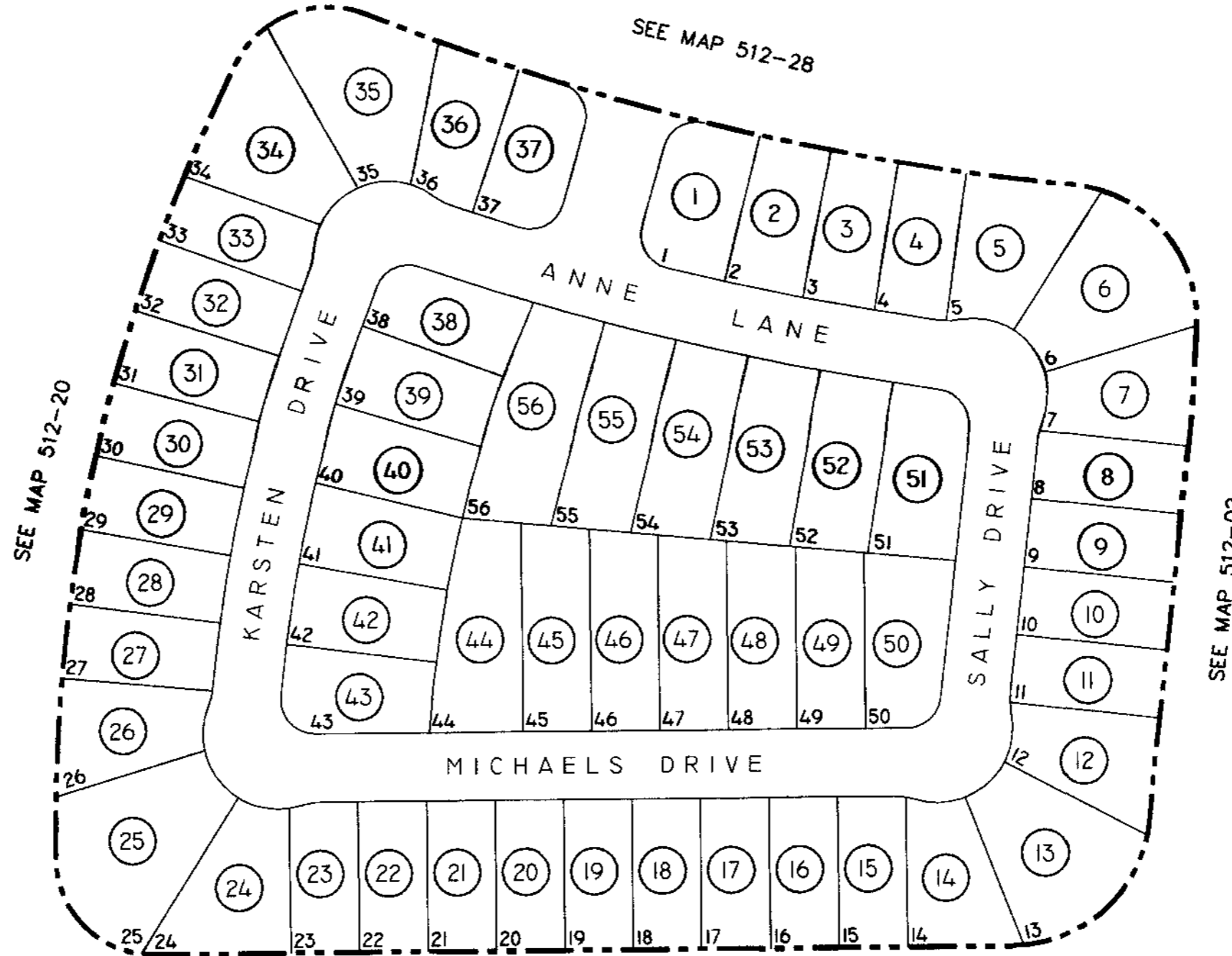
# SEC. 15, TN.4S RG.3E

THIS MAP IS FOR TAX PURPOSES ONLY  
THIS OFFICE WILL NOT ASSUME LIABILITY FOR  
REPRESENTATION, MEASUREMENTS OR ACREAGE.

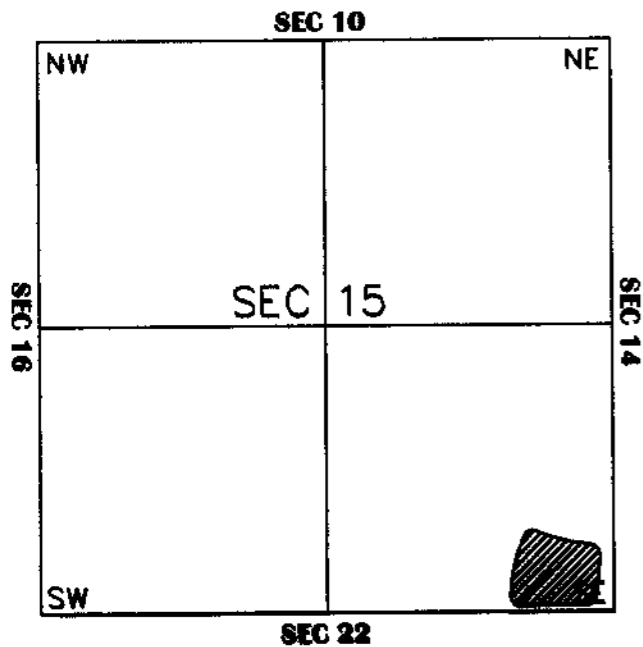
THE ORIGINAL PLAT OF THIS SUBDIVISION IS  
ON FILE WITH THE PINAL COUNTY RECORDERS  
OFFICE, FOR COMPLETE INFORMATION OF PLAT  
AND C&R's CALL (520) 868-7100

# 512-29

**PARCEL 13 @  
RANCHO EL DORADO  
CAB."C" - SLD.186**



## VICINITY MAP



SCALE. 1" = 150'

8-30-2001

SEE MAP 510-21