

SEC. NE 21 TN.4S RG.3E

512-30  
2/7

ACACIA CROSSINGS  
PARCEL 2

CAB "D" SLIDE 106

AREA CODE  
2019

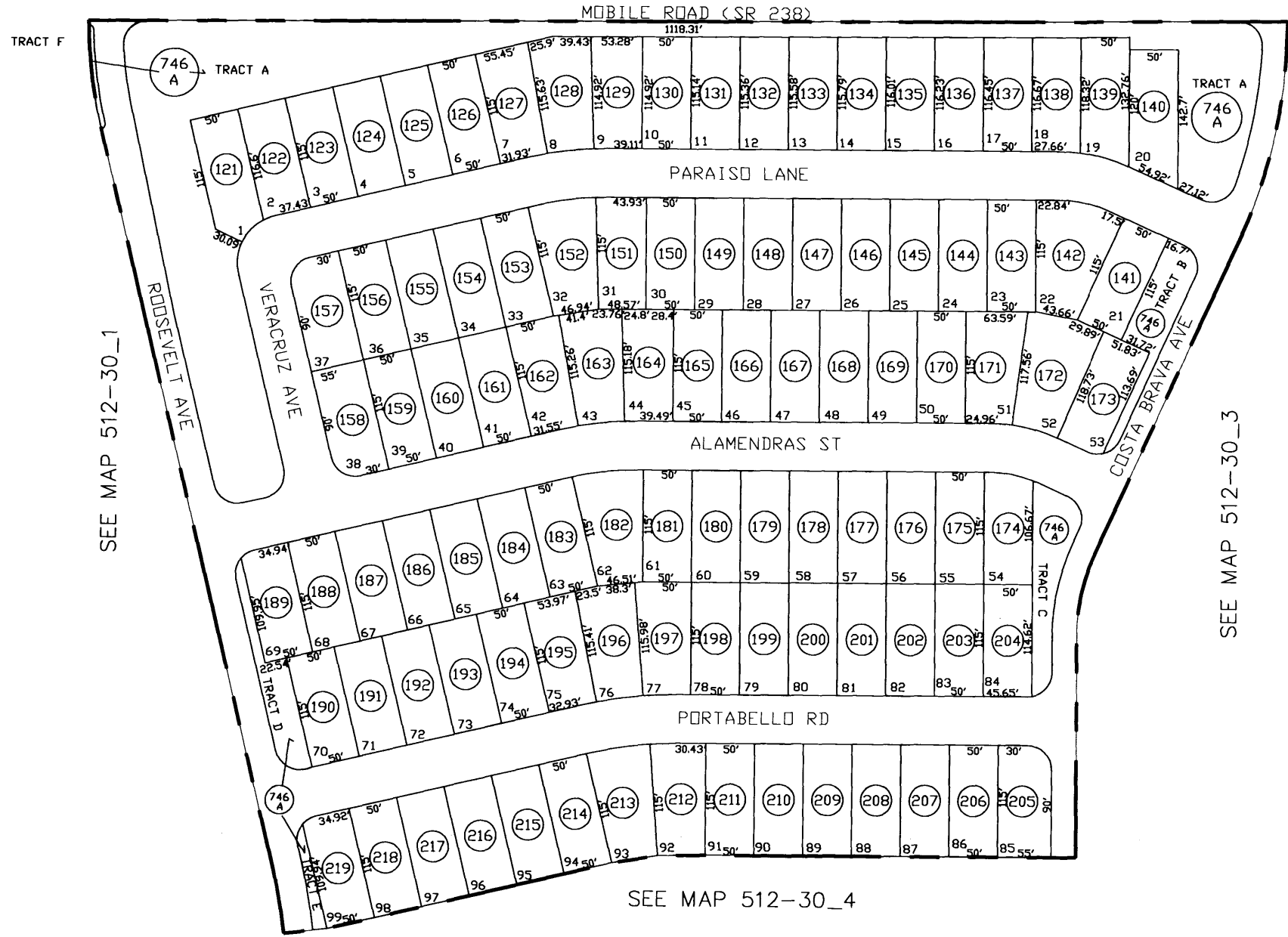
SPECIAL DISTRICTS  
16602  
00000

THIS MAP IS FOR TAX PURPOSES ONLY.  
THIS OFFICE WILL NOT ASSUME LIABILITY FOR  
REPRESENTATION, MEASUREMENTS OR ACREAGE.

THE ORIGINAL PLAT OF THIS SUBDIVISION IS  
ON FILE WITH THE PINAL COUNTY RECORDERS  
OFFICE, FOR COMPLETE INFORMATION OF PLAT  
AND CC&R's CALL (520) 868-7100.

PARCELS CANCELED  
510-17-001A, 002C, 510-21-011C

SEE MAP 510-12

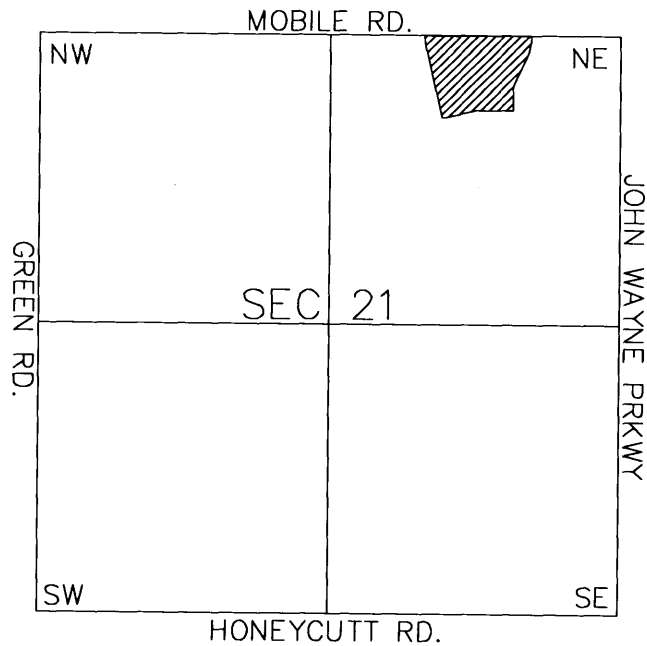


SEE MAP 512-30\_1

SEE MAP 512-30\_3

SEE MAP 512-30\_4

VICINITY MAP



SCALE: 1" = 150'

12-22-2002