

SEC. 15, TN.4S RG.3E

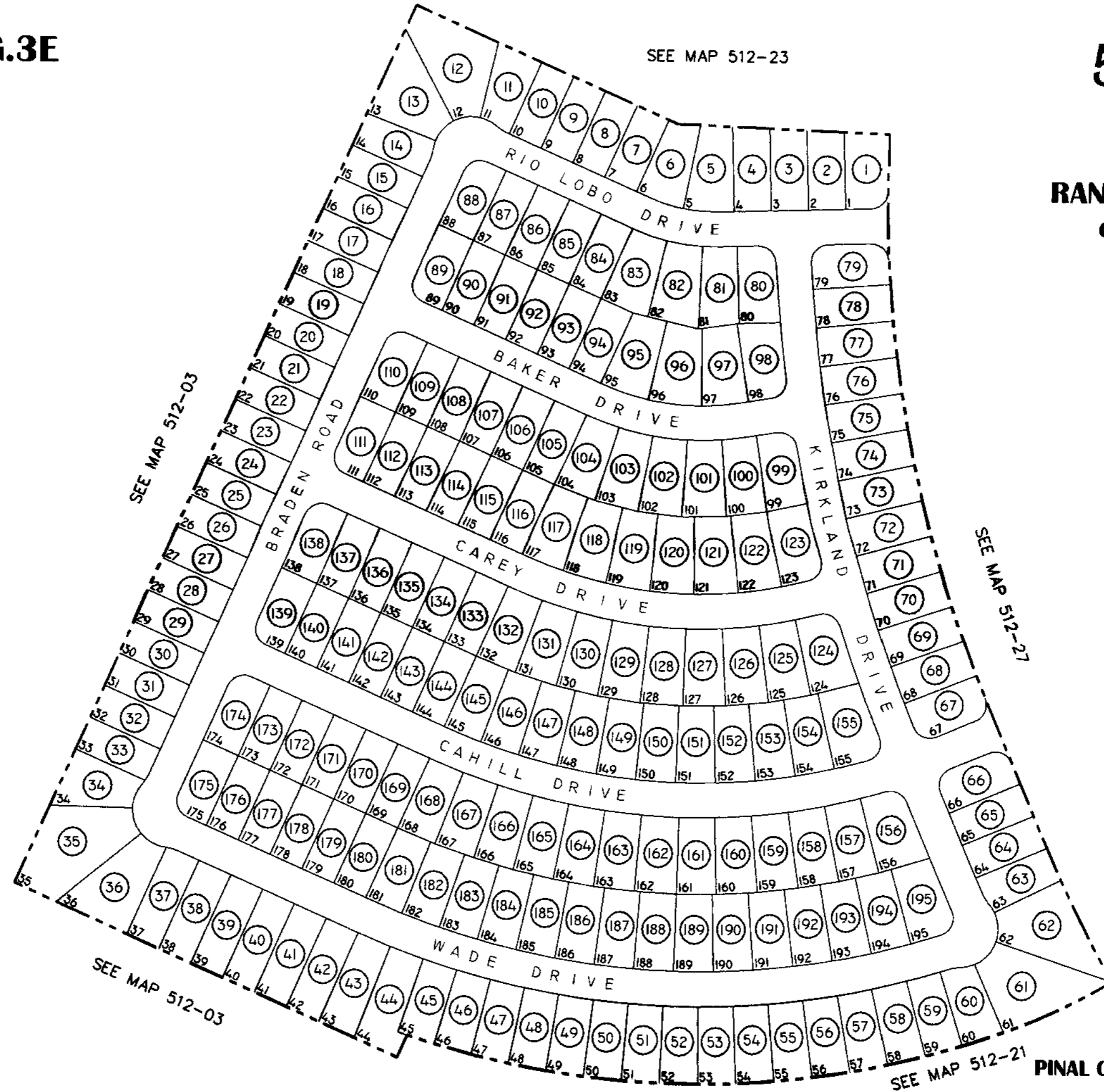
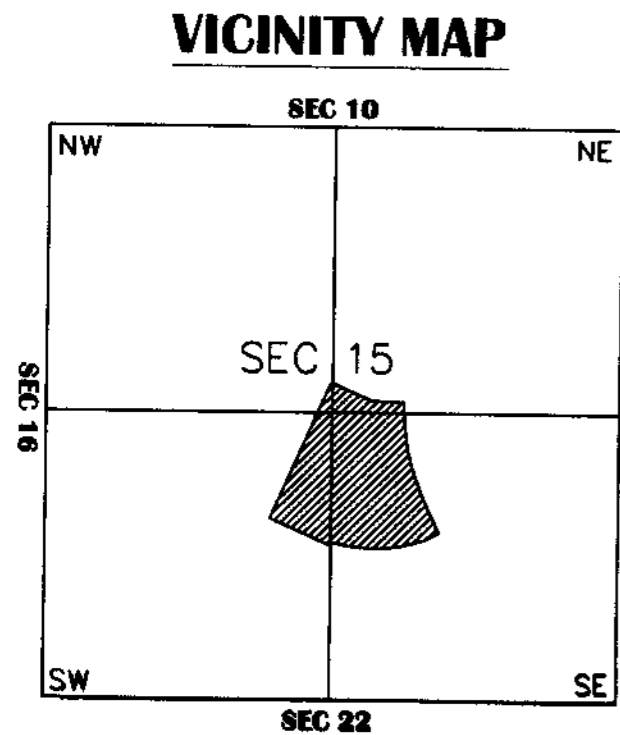
THIS MAP IS FOR TAX PURPOSES ONLY
THIS OFFICE WILL NOT ASSUME LIABILITY FOR
REPRESENTATION, MEASUREMENTS OR ACREAGE.

THE ORIGINAL PLAT OF THIS SUBDIVISION IS
ON FILE WITH THE PINAL COUNTY RECORDERS
OFFICE, FOR COMPLETE INFORMATION OF PLAT
AND CC&R's CALL (520) 868-7100.

SEE MAP 512-23

512-22

**PARCEL 3 @
RANCHO EL DORADO
CAB."C" - SLD.181**



SCALE: 1" = 150'

8-30-2001

PINAL COUNTY ASSESSORS MAP