

SEC. 14 TN.4S RG.3E

512-14
3/7

RANCHO EL DORADO
PH. 2 - PAR 13
CAB. D - SLD. 75

AREA CODE
0000

SPECIAL DISTRICTS
00000
00000

THIS MAP IS FOR TAX PURPOSES ONLY.
THIS OFFICE WILL NOT ASSUME LIABILITY FOR
REPRESENTATION, MEASUREMENTS OR ACREAGE.

THE ORIGINAL PLAT OF THIS SUBDIVISION IS
ON FILE WITH THE PINAL COUNTY RECORDERS
OFFICE, FOR COMPLETE INFORMATION OF PLAT
AND CC&R's CALL (520) 868-7100.

CANCELED PARCELS
512-02-003A, 004B, 004C

SEE MAP 512-02

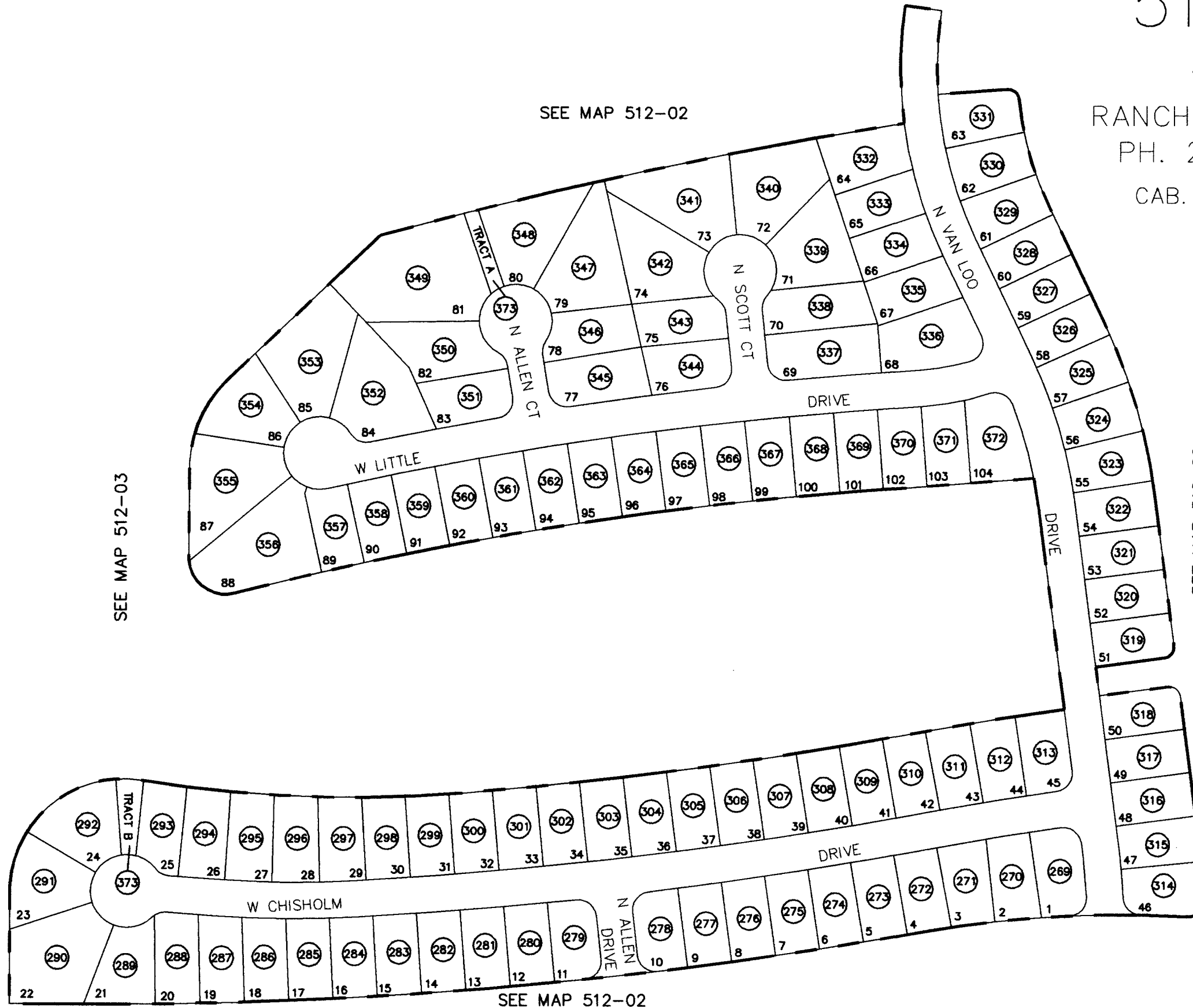
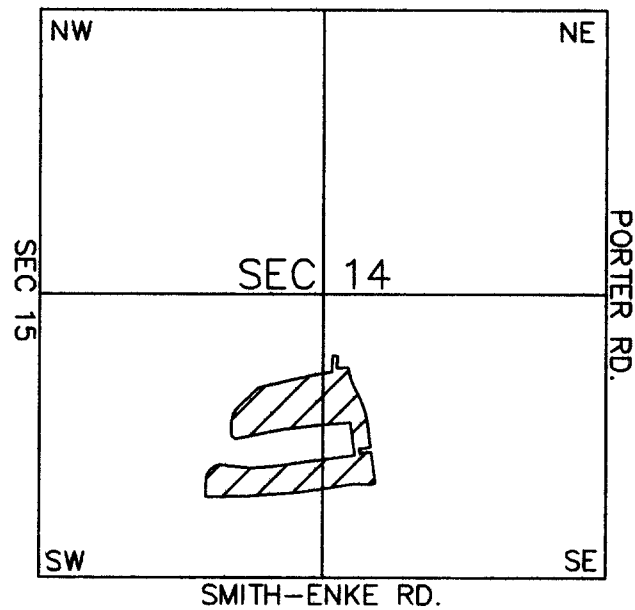
SEE MAP 512-03

SEE MAP 512-02

SCALE: 1" = 150'

08-24-2002

VICINITY MAP



SEE MAP 512-02