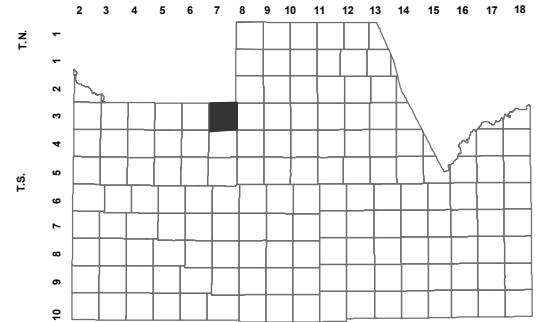


# 516-01\_5

SW SEC. 11 T.03S. R.07E.

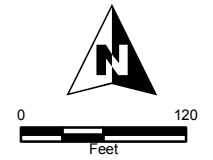
SAN TAN HEIGHTS PARCEL C-9  
CAB. G - SLD. 021

LOCATION MAPS  
R.E.



TOWNSHIP

EMPIRE BLVD					
6	5	4	3	2	1
SCISSAN RD.	8	9	10	11	12
18	17	16	15	14	13
19	20	21	22	23	24
30	29	28	27	26	25
31	32	33	34	35	36
SECTION					
GARY RD.					



Revised: 2/22/2018

By: **MBG**



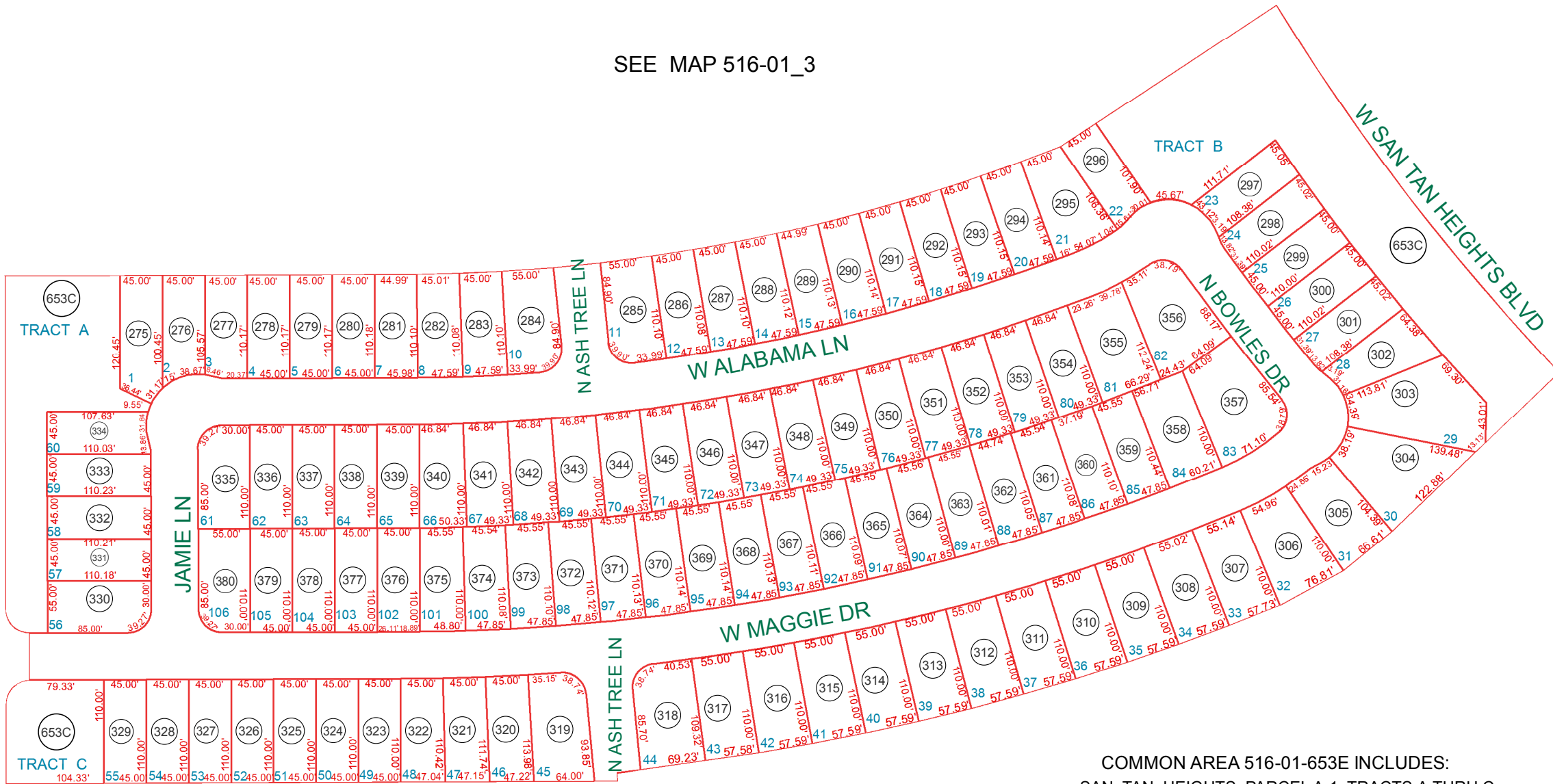
**PINAL COUNTY**

WIDE OPEN OPPORTUNITY

**Pinal County Assessor**

THIS MAP DOES NOT REPRESENT A SURVEY. NO LIABILITY IS ASSUMED FOR THE ACCURACY OF THE DATA DELINEATED HEREIN, EITHER EXPRESSED OR IMPLIED BY PINAL COUNTY OR ITS EMPLOYEES. THIS MAP IS COMPILED FROM OFFICIAL RECORDS, INCLUDING PLATS, SURVEYS, RECORDED DEEDS AND CONTRACTS, AND ONLY CONTAINS INFORMATION REQUIRED FOR THE PINAL COUNTY ASSESSOR'S OFFICE PURPOSES.

SEE MAP 516-01\_3



SEE MAP 516-01\_8

**COMMON AREA 516-01-653E INCLUDES:**

- SAN TAN HEIGHTS PARCEL A-1: TRACTS A THRU C
- SAN TAN HEIGHTS PARCEL A-2: TRACTS A THRU D
- SAN TAN HEIGHTS PARCEL A-3: TRACTS A THRU C
- SAN TAN HEIGHTS PARCEL A-4: TRACTS A THRU C
- SAN TAN HEIGHTS PARCEL A-5: TRACTS A THRU C
- SAN TAN HEIGHTS PARCEL A-6: TRACTS A THRU C
- SAN TAN HEIGHTS PARCEL A-7: TRACTS A THRU C
- SAN TAN HEIGHTS PARCEL A-8: TRACTS A THRU D
- SAN TAN HEIGHTS PARCEL A-9: TRACTS A THRU C
- SAN TAN HEIGHTS PARCEL C-6: TRACTS A & B
- SAN TAN HEIGHTS PARCEL C-8: TRACTS A THRU C
- SAN TAN HEIGHTS PARCEL C-10: TRACTS A THRU C
- SAN TAN HEIGHTS PARCEL C-11: TRACTS A THRU C
- SAN TAN HEIGHTS PARCEL C-13: TRACT A

SAN TAN HEIGHTS PARCEL C-7: TRACTS A THRU C ARE UNDER APN 516-01-653B  
 SAN TAN HEIGHTS PARCEL C-9: TRACTS A THRU C ARE UNDER APN 516-01-653C  
 SAN TAN HEIGHTS PARCEL C-12: TRACTS A THRU F ARE UNDER APN 516-01-653D

SEE MAP 516-01\_4  
N OCCIDENTAL DR

SEE MAP 509-12\_1